

**Easterseals Southern Georgia, Inc.**  
**Financial Summary**  
**September 1, 2020 - August 31, 2021**

<b>ASSETS</b>		<b>LIABILITIES &amp; NET ASSETS</b>	
Cash	\$ 591,303	Current Liabilities	\$ 980,341
Restricted Cash	\$ 4,344,798	Long Term Debt	\$ 296,845
Endowment Account	\$ 93,582	Temporarily Restricted Net Assets	\$ -
Accounts Receivable	\$ 464,640	Net Assets-No Restrictions <sup>(Design)</sup>	\$ 3,492,638
Other Assets	\$ 200,804	Net Assets-No Restrictions	\$ 2,626,751
Property & Equipment	\$ 1,743,548	Net Assets-Donor Restricted	\$ 42,100
<b>TOTAL ASSETS</b>	<b>\$ 7,438,675</b>	<b>TOTAL LIABILITIES &amp; NET ASSETS</b>	<b>\$ 7,438,675</b>

	<u>ACTUAL</u>
<b><u>INCOME</u></b>	
Donations - Cash	\$ 119,240
SBA - PPP Grant	\$ 1,411,303
Special Events	\$ 3,663
United Way Allocation	\$ 15,224
Government Grants/Fees	\$ 2,134,929
Program Service Fees	\$ 8,208,157
Other Income	\$ 365,093
<b>TOTAL INCOME</b>	<b>\$ 12,257,609</b>

<b><u>EXPENSES</u></b>	
Direct Services	\$ 9,315,246
Fund Raising	\$ 177,130
Management & General	\$ 1,046,957
National Membership Fees	\$ 52,575
<b>TOTAL EXPENSES</b>	<b>\$ 10,591,908</b>

<b>TOTAL INCOME OVER EXPENSES</b>	<b>\$ 1,665,701</b>
---------------------------------------	---------------------

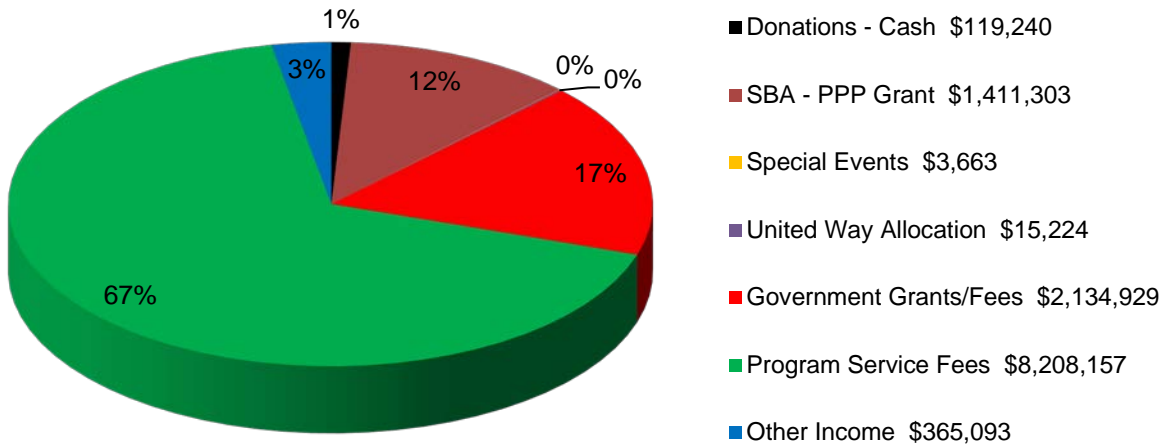
NOTE: Does not include financial information of affiliated HUD housing Corporations.

# Easterseals Southern Georgia, Inc.

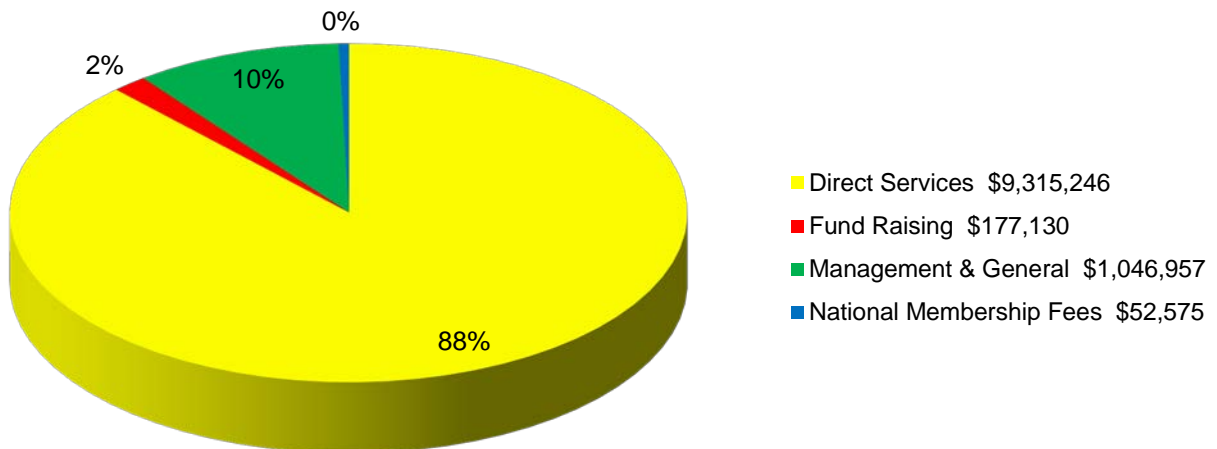
## Financial Summary

### September 1, 2020 - August 31, 2021

### Income



### Expenses



NOTE: Does not include financial information of affiliated HUD housing Corporations.