



Massachusetts Rehabilitation Commission Quick Start Guide

Logitech MK270 Wireless Keyboard and Mouse Combo

The box/ packaging contains:

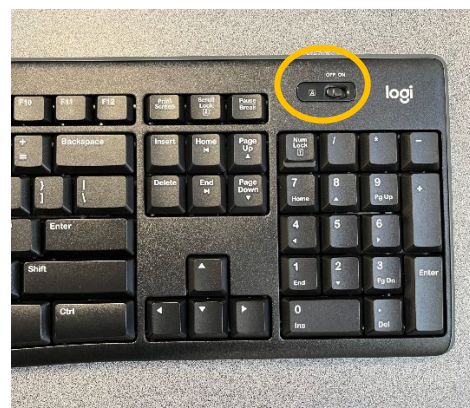
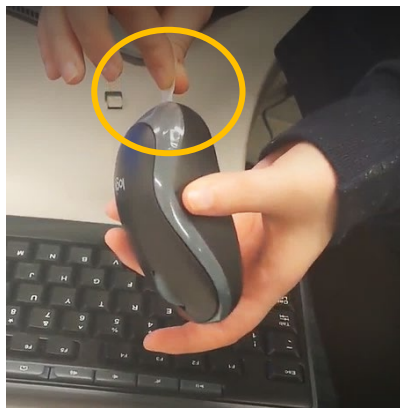
- 1 full size wireless **keyboard** (with 2 AAA batteries)
- 1 ambidextrous wireless **mouse** (with 1 AA battery)
- **USB receiver** (found separately in the packaging)

When you first open the box, please make sure you have received all three items: the keyboard, the mouse, and the USB receiver. The USB receiver is found in a flap of the box. Don't lose this item.

If any items are missing or visibly damaged, please contact support.

To **set up** your keyboard and mouse,

1. Pull out the **tabs** sticking out of the battery compartments of the mouse and the keyboard.
2. To use the keyboard and/or the mouse with your computer,
 - a. Turn on your computer.
 - b. Plug the USB receiver into your computer, and
 - c. Toggle on the power switch at the bottom of the mouse, and/or
 - d. Toggle on the power switch at the top right of the keyboard.



3. When you are not using either device, you can store the USB receiver inside the mouse:
 - a. Flip over the mouse and slide off the battery cover.
 - b. Put the USB receiver into the slot in the battery compartment of the mouse. It will fit facing either way.
 - c. Replace the battery cover.

