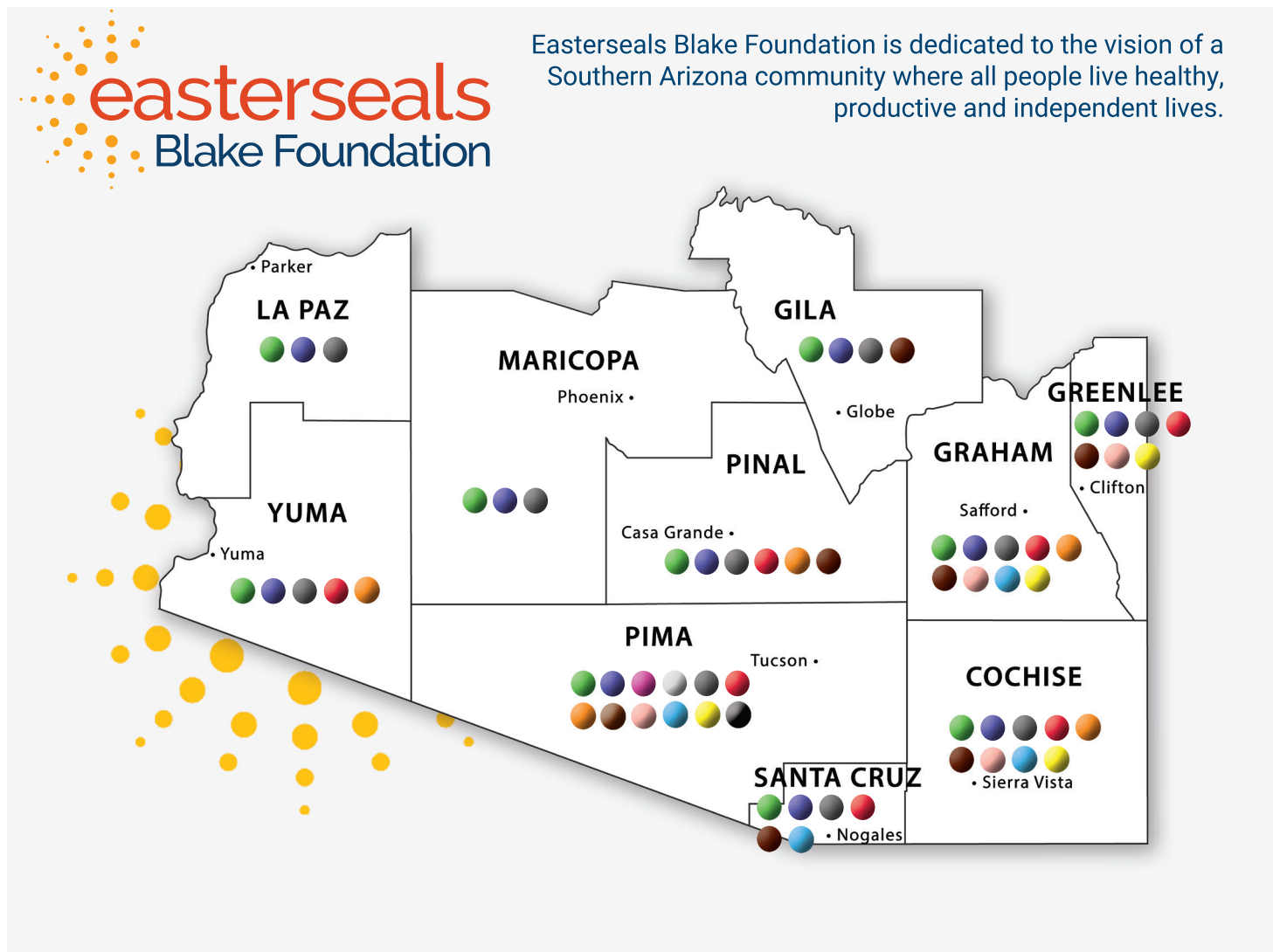




improving lives everyday





easterseals
Blake Behavioral Health

- Outpatient care coordination and therapy for infants, children, families and adults
- Comprehensive psychiatric and medication services
- Therapeutic residential treatment for youth and adults with complex behavioral health needs
- Semi-independent living for adults with serious mental illness
- Family reunification therapy and support

easterseals
Blake Children & Family

- Family support and education, including preservation and reunification
- Inclusive early childhood education
- Professional Development for child care professionals

easterseals
Blake Transportation

- Transportation services for individuals who are elderly or have intellectual or physical disabilities

easterseals
Blake Employment & Community Living

- Residential and rehabilitative services for adults with intellectual or physical disabilities
- Job development, coaching and employment support for teens and adults with intellectual or physical disabilities
- Supportive day programs and in-home support for adults with intellectual or physical disabilities

improving lives everyday

YOU are Changing Lives!

WHO WE SERVE

Client Demographics

Age	
0-2	4,578
3-5	1,725
6-17	2,148
18-64	12,871
65-74	427
75+	66

Gender	
Male	5,696
Female	16,119

Heritage/Ethnicity	
Asian American	271
African American	982
Caucasian	8,453
Hispanic	6,975
Native American	245
Native Hawaiian or other Pacific Islander	20
Multiple Ethnicity	3,132
Other	1,410

Total Clients Served.....22,160
*Demographic data, not collected for all programs

Community Engagement

Community Outreach Activities 29,135
Conference Exhibits • Health Fair Exhibits • Open Houses

Educational Programming Activities 589
Parent/Caregiver Seminars • Teaching engagements

Volunteer Activities 501
Affiliate Program Volunteers • Special Events • Office Initiatives

Total community engagement30,225

Total..... 52,385

PROGRAM SPOTLIGHT

Blake Employment & Community Living

Blake Employment & Community Living provides job training/support for teens and adults with intellectual or physical disabilities in Pima, Graham and Greenlee counties.

Focusing on individual strengths, employees of **Sage Ceramics** in Tucson design, manufacture and sell a variety of handcrafted ceramics. You can visit the studio and retail store at 1010 N. Stone Ave., Monday through Friday, 8:30am to 3:30pm for purchase of their unique creations.

Blake Behavioral Health



In 2017, Cenpatico Integrated Care, the Regional Behavioral Health Authority for Southern Arizona, recognized Easterseals Blake Foundation as one of only three Centers of Excellence.

A Behavioral Health Center of Excellence is known by the entire community as a great place to get care with standards including easy access, world-class customer service built on a culture of engagement and wellness, comprehensive care, excellent outcomes and excellent value.

Blake Behavioral Health provides access to children, teens and adults with outpatient care coordination and therapy, comprehensive psychiatric and medication services, therapeutic residential treatment, semi-independent living for adults with serious mental illness, and family preservation, reunification support and education.



Event Sponsorship



March 24, 2018

A 2.5K walk followed by an interactive expo with food and entertainment.

- ☐ **Community** \$2,500
- Branded water station
 - On air radio recognition day of event
 - Everything ***included in TEAM level sponsorship***
- ☐ **Team** \$1,500
- 10x10 space at Expo
 - 10 participant entries with t-shirts
 - Recognized during announcements
 - Printed/electronic material and media acknowledgment
 - Volunteer opportunity and company logo on t-shirt
- ☐ **Tent** \$500
- 10x10 space at Expo
 - Five (5) participant entries with t-shirts
 - Printed/electronic material and media acknowledgment
 - Company logo on t-shirt
- ☐ **Vendor** \$250 / In-Kind
- 10x10 space at Expo to distribute items to participants
 - Company logo on t-shirt
- ☐ **Individual** \$10
- Participant T-shirt

Golf & Spa Event

June 1, 2018

Golf tournament and spa day at Starr Pass including lunch at the Catalina BBQ, player prizes and entertainment!

- ☐ **Hole-in-one** \$2,500
- One foursome for golf or spa
 - Tee-box sign on designated hole or at spa
- ☐ **Eagle** \$1,500
- One foursome for golf or spa
 - Tee-box sign on designated hole or at spa
- ☐ **Birdy** \$600
- One foursome for golf or spa
 - Tee-box sign on designated hole or spa
- ☐ **Fore!** \$150
- Individual golf or spa participant
- ☐ **Tee-box / Spa** \$125 / In-Kind
- Tee-box sign on designated hole or spa



September 20, 2018

Local celebrities team up with master Teppan Chefs for an unforgettable dining experience

- ☐ **Top Hat** \$5,000
- Preferential seating for 8
 - Be your own chef and dazzle your guests, or have 1st choice of a "Celebrity Chef" we provide.
 - Company recognized during silent & live auctions, and Raise the Paddle, plus media and printed materials acknowledgements
 - Your name or Company logo on Chef's Hat and Apron
- ☐ **Celebrity Chef** \$2,500
- Preferential seating for 8
 - Company recognized during silent & live auctions, and Raise the Paddle, plus live and digital recognition
 - Company logo on Chef's Apron
- ☐ **It's My Party** \$1,600
- Preferential seating for 8
 - Recognition in the program
- ☐ **A la Carte** \$200
- An individual seat to dine with the stars!
- ☐ **Dessert** Silent Auction / In-Kind
- Recognition in program



November 17, 2018

EBF is primary beneficiary of the El Tour De Tucson and also has our own team of more than 200 riders.

- ☐ **Presenting** \$5,000
- EBF El Tour Team, Presented by YOU!
 - Branded ride day cheering station along El Tour route includes day of on air radio promotion.
 - Recognition in printed and electronic media
 - Company material distributed to all 6000 El Tour riders
 - Company logo on EBF jersey
 - Two (2) El Tour de Tucson Dedication Dinner tickets
- ☐ **Cheering Station** \$2,500
- Branded ride day cheering station along El Tour route includes day of on air radio promotion.
 - Recognition in printed and electronic media
 - Company material distributed to all 6000 El Tour riders
 - Company logo on EBF jersey
 - Two (2) El Tour de Tucson Dedication Dinner ticket
- ☐ **Weekend Warrior** \$500
- Recognition in printed and electronic media
 - Company logo on back of EBF jersey

Company _____

Address _____

Phone _____

Contact _____

City _____ State _____ Zip Code _____

Email _____

Sponsor to provide: Camera-ready logo to SReichart@blake.easterseals.com to be included in web and printed materials.

☐ Invoice me

☐ Check No

☐ Charge my

Visa / Mastercard / AMEX (circle one)

Card Number _____

Exp. Date _____

Code _____

Signature _____

Billing Zip Code _____

Payment Information: I/we agree to purchase the above package. Checks should be made payable to Easterseals Blake Foundation. EBF is a 501(c)(3) nonprofit organization, TIN: 86-0093224. This agreement is non-cancellable.

Philanthropy

/fəˈlɑːnθrəˈpi/ • (noun) • the desire to promote the welfare of others, expressed especially by the generous donation of money to good causes.

EBF is a 501(c)(3) nonprofit organization, TIN: 86-0093224.

ARIZONA TAX CREDIT • You can improve the lives of vulnerable children in southern Arizona by directing your tax dollars to Easterseals Blake Foundation. Your tax credit contribution reduces what you owe in state taxes by up to \$1000 (married filing jointly) or \$500 (single filers). Arizona taxpayers can take advantage of all available tax credits each year: Arizona Foster Care, Private School, and Public School. As a Qualifying Foster Care Organization, a \$0 contribution equals a \$50 tax credit. Your contribution supports programs that provide services to more than 30,000 children, adults and families each year. Have peace of mind knowing that you have put your tax dollars to work for Arizona's most vulnerable children.



LEGACY GIVING • Legacy's and bequests play an important part in funding programs that enable all people in Southern Arizona to live healthy, productive and independent lives. There are many

ways you can ensure your philanthropic wishes become a reality. One of the simplest and most popular ways to empower people with disabilities is to leave a gift to Easterseals Blake Foundation in your will or trust. We are happy to talk with you about your philanthropic goals. Call Dina at 520.327.1529 ext 7061

PAYROLL & COMPANY MATCHING DONATION • Do you annually review your pre-tax deductions? Does your company provide matching donations? Check in with your human resources representative and let them know you support EBF. We'll be happy to assist in getting all the appropriate paperwork completed.

VOLUNTEER • Time is so valuable and when you have some to give, let us know. Besides our four signature events, various programs and locations also have opportunities to provide a helping hand.

WISH LIST • We have item-specific needs in all programs. Directly donate for a much needed item.



Faces & Places of EBF



Antonio

Due to an accident as an infant, Antonio received early intervention services from EBF. For his 11th birthday, Antonio donated his gifts to EBF to show his appreciation.



JT

JT and his family received In-home Early Head Start services focused on academic and socialization skills. JT has opened up at home and in public. He was incredibly shy and now he is able to engage people in conversation and he is even singing!



Early Childhood Centers

EBF operates four early childhood centers across Arizona, providing an inclusive environment for children with and without special needs. EBF was recently awarded the highest rating - 5 STARS - from Quality First; the state-wide quality improvement and child care rating system.



Tiffany

Tiffany was born with cerebral palsy. She maintains her independence with assistance from EBF. Tiffany was Maid of Honor at her younger sister Olivia's wedding.

Leadership

Easterseals Blake Foundation, a 501(c)(3) nonprofit service organization, was formed in 1950 as the Cerebral Palsy Foundation of Southern Arizona.

BOARD OF DIRECTORS

Eric Meyers, President • Enterprise Fleet Management
James Maina, Vice President • Main Street
Executive & Employee Benefits, LLC
Lindy Cote, Treasurer • Raytheon Missile Systems

danny Blake • Disability Advocate
Besty Bruce • Journalist
Patricia Brown • Keller Williams Southern Arizona
Jeffry Gardner • BRAKEMax Care Centers
Michael Goldsmith • H2O Joe Drinking Water Systems
Gene Goldstein • Bramic Design Group PPLC
Eric Smith • National Bank of Arizona
James Woodrow • Law Offices of James Woodrow

EXECUTIVE TEAM

Ema M. Kammeyer, Chief Executive Officer
Gina K. Judy, Chief Operations Officer
Roxanne Holly, Chief Financial Officer
Steve Guthrie, Chief Administrative Officer
Thomas Wolfe, Chief Information Officer
Dina Scalone, Chief Philanthropy Officer
Laura Morales, Chief Health Services Officer



7750 E. Broadway Blvd., Suite A200 • Tucson, AZ 85710
520.327.1529 • FAX: 520.327.1529
www.easterseals.com/blakefoundation
Facebook.com/BlakeFoundation
Twitter.com/EBF_Arizona

Who is danny Blake?

danny Blake was born into your typical American blue collar family.



After enduring a particularly grueling childbirth, danny was diagnosed with Cerebral Palsy and it was recommended that he be immediately placed in an institution. His parents staunchly refused and took their son home to join his family. At home, danny was like any other member of the family, with chores and responsibilities. In 1955 at the age 5, danny was named the Easterseals Child of year and was photographed with Governor Lausche of Ohio.

There was no such thing as "inclusion" in 1958 – anyone different was separate. However, it didn't take long for danny's educators to realize that his "differences" were only surface level. In the third grade he moved into the general education population. Initially danny remembers being, tormented, teased, and even physically beaten by his peers. While many children would let this treatment deter them from school, danny persisted, and within two years his tormentors became his friends, supporters, and motivators. By his senior year he was the school President, editor of the school yearbook, and graduating near the top of his class with a 3.8 GPA.

He attended Miami of Ohio for his freshman year and then moved with his family to Arizona, and enrolled in Arizona State University to complete his Bachelors and ultimately received a Master's Degree in Social Service Administration at The University of Chicago. After graduation, he moved to San Francisco but despite his qualifications, he was only offered employment at the local Cerebral Palsy Center, where he became an agency spokesperson and disability advocate. He spoke/taught courses on emerging issues of the decade like Sexuality and Disability. When he returned to Southern Arizona in 1985, he became a board member of the Cerebral Palsy Foundation of Southern Arizona. He was instrumental in helping the agency obtain a half-million dollar grant from Angel Charities, giving the final speech on hope and perseverance, which left the entire room in tears. By 1993, Cerebral Palsy Foundation of Southern Arizona was serving more than just those with Cerebral Palsy and decided to change their name to The Blake Foundation, in honor of danny. In 2006 the agency became an Easterseals affiliate. danny remains on the Board of Directors and is a past Board President.

danny spells his name with "d" in order to carrying his experiences as a youth with him in his adult life. Thankfully, the world is a different place for people with disabilities today. danny's life serves as a reminder of how far we have come and the work left to do.