

In collaboration with Milwaukee County Office for Persons With Disabilities



2018 Summer Recreation Programs

For Teens and Adults with Disabilities



Mission Statement

Who do the Easterseals Adult Recreation Programs serve?

The programs in this guide are intended for individuals ages 16 and older who live with any type of physical, cognitive or emotional disability. Our caring and compassionate staff are experienced in leading activities adapted for all sorts of abilities and functioning levels. No select program is designed for any specific degree of functioning; rather, ALL programs are designed for the success of anyone who wishes to learn a new skill, enhance a skill they already possess, or simply get out and socialize in the community.

Throughout this guide, you will find a variety of offerings on various evenings and weekends at multiple locations, giving you the freedom to choose how busy you want to be with us. That is our person-centered approach.

Why Should I Get A Key Card?

offered by Milwaukee County Office for Persons with Disabilities

Yearly paid membership in the Wil-O-Way Key Card program expands recreational opportunities for persons with disabilities at a reduced cost or no cost.

Benefits include:

- *Reduced program pricing including Dances and Proms and additional low or no cost community events.*
- *Access to the Milwaukee County sports ticket distribution program. Admirals, Bucks, Brewers and Wave offer free and/or discounted tickets. Assigned on a first come, first served basis, subject to availability.*
- *Invitation to Milwaukee County recreation and culture special events. Discounts to Marcus Center performances, as well as free Holiday Folk Fair tickets on a first come, first served basis, subject to availability.*
- *Milwaukee Community Sailing Center has select Fridays providing free sailing.*

And more!

Complete the enclosed Key Card application today!

For questions on Key Cards, contact Milwaukee County Office for Persons with Disabilities: Email Mike Bonk at michael.bonk@milwaukeecountywi.gov or go to: <http://county.milwaukee.gov/WOWKeyCard>

Table of Contents

3	Contact Information	13	Adult Day Services
4	How To Register	14	Employment Training Programs: Project SEARCH and LilyWorks
5	Program Policies	15	Walk With Me
6	Friday Night Dances		INSERT 2018 Key Card Application
8	Community Outings		INSERT 2018 Registration and Information Form
10	Wil-O-Way Grant & Underwood Programs		INSERT 2018 Summer Recreation Program Calendars
	Generations Center Weekly & AMF West Lanes Bowling Programs		
12	Generations Center Sunday Programs		

Meet at the “REC ROOM”

Are you a person with a disability looking to get out and make new friends? Are you an agency supporting events that are accessible and want to welcome people with disabilities? At the Rec Room website, you will find a master recreation calendar for the Southeast Wisconsin region that features accessible events designed with people with disabilities in mind. The Rec Room connects people, places and events. **For more information, contact Mike Bonk at (414) 278-3938 or michael.bonk@milwaukeecountywi.gov.**

Milwaukee County Office for Persons with Disabilities continuously updates its recreation website. www.county.milwaukee.gov/RecRoom.

Inclusion

We support and encourage people with disabilities to participate in recreational activities in the community. If there is an activity you would like to participate in and need support to ensure a safe, welcoming and enjoyable leisure experience, **please call Easterseals at 414-449-4444 and ask for a Recreation Supervisor.**

Contact Information

Chelsea McCracken, *Recreation Supervisor*
Easterseals Southeast Wisconsin
Office: (414) 449-4444
Cell: (414) 550-2294
chelseam@eastersealswise.com

Mike Bonk, *Disabilities Recreation Manager*
Milwaukee County Office for Persons with Disabilities
Phone: (414) 278-3938
michael.bonk@milwaukeecountywi.gov

Easterseals Generations Center
2222 S. 114th St., West Allis, WI 53227
Phone: (414) 449-4444

Wil-O-Way Grant
207 Lake Dr., South Milwaukee, WI 53172

Wil-O-Way Underwood
10602 Underwood Pkwy., Wauwatosa, WI 53226

Easterseals Wauwatosa Center
7111 W. Center St., Wauwatosa, WI 53210
Tosa Center Main Line: (414) 536-9050
(Only during scheduled program hours)

AMF West Lanes
7505 W. Oklahoma Ave., Milwaukee, WI 53219
Bowling Alley Phone: (414) 321-5050

How To Register

Program Registration

To register for the programs in this guide:

1. Complete the 2018 Key Card Application* (inserted in this booklet). Instructions for payment can be found on the 2018 Key Card Application.

DO NOT SEND KEY CARD PAYMENT TO EASTERSEALS!

Enclose payment and mail to:

**Office for Persons with Disabilities
c/o Mike Bonk
901 N. 9th St., Room 307-B
Milwaukee, WI 53233**

***Key Card Membership is good for one calendar year. All new and past members must fill out a 2018 Key Card Application. Sign up today so you can take advantage of reduced dance prices and access to the Milwaukee County OPD ticket distribution program!*

2. Complete the 2018 Spring Registration & Annual Information Form (inserted in this booklet).

- Completely fill out the Annual Information Form (AIF). This form MUST be completed for the year 2018 and is required to process your registration. The AIF and Registration must be sent in together.
- Completely fill out the personal information at the top of the Registration Form.
- Circle or highlight the programs from the list for which you want to register.
- Add up the total cost of all the programs and enter this amount in the "Total Payment Due" line.
- Indicate how you are paying for our programs, how you heard about our recreation programs and the form of transportation you will be using.
- Enclose a check for the total cost of the programs and mail to:

**Easterseals Southeast Wisconsin
c/o Recreation Supervisor
2222 S. 114th Street
West Allis, WI 53227**

***All of the above information is crucial in order for Easterseals to provide the most enjoyable recreation experience possible. Please take the time to ensure all information is provided and accurate.*

Registration Details

- Registration will NOT be accepted by fax. Payments MUST accompany all registrations.
- Registrations will NOT be processed without all appropriate paperwork (i.e. AIF, Registration Form, Key Card, payment).
- **Registration and payment must be mailed or dropped off at the Easterseals Generations Center.** Program staff cannot accept registration materials. Do NOT

bring your materials to any of the recreation programs. If you are dropping off your materials, you must bring them to the Easterseals Generations Center front desk during business hours (Monday-Friday 8am-4:30pm)

- If you are unable to pay the entire registration fee in advance, **please call (414) 449-4444 and ask to speak to someone in the business office to discuss a payment plan. If you have not paid or made a payment plan within three weeks of the session start, you may be excluded from programming until payment is received. If a case manager or rep payee will be sending in your materials, please be sure their contact information on your registration form is accurate.**

Credits/Refunds

Due to the nature of our programs and outings for which tickets or supplies must be purchased in advance, no refunds will be issued if you are unable to attend. If a program is cancelled by Easterseals or your program is full, you will either receive a credit towards another program or a refund.

Late Registration

If we do not receive and process your registration before programs start, it will be considered late. If you wish to register after programs start, contact 414-449-4444 and ask for a Recreation Supervisor to confirm whether or not there are still openings in your desired programs. To keep safety a priority, if you are registering late, please call Easterseals to confirm your registration has been accepted.

Interested parties should not schedule transportation to any Easterseals programs before registering and paying ahead of time.

Fees

All program fees must be paid at the time of registration, unless you have determined a payment plan with the business office. Checks and money orders are to be made payable to: **Easterseals Southeast Wisconsin.** Registrations will not be processed until payment received. If you are working with a case manager or rep payee, please work together to make sure the payment is sent in with the registration form.

Program Policies

Maximum Enrollment

There are maximum limits for enrollment in each program. If a program reaches capacity, you will be contacted by phone and given the option of switching to a different program, receiving a credit toward a future program or receiving a refund check.

Returned Check Policy

All checks returned for insufficient funds, accounts closed or no account will be charged a \$30 fee plus the cost of the outstanding program fee.

Policy Questions

If you have questions regarding any of these policies, contact a Recreation Supervisor at **414-449-4444**.

2018 Key Card Membership

Individuals with disabilities, ages 16 and older, are asked to become Key Card Members to register for our programs. There are many benefits from becoming a Key Card member – **see the application included in this book or call (414) 278-3938**. The Key Card Application is located in the center of this book as an insert. Please note: Key Card membership is good for the calendar year from January 1st to December 31st and must be renewed each year. Key Card memberships are processed by Milwaukee County Office for Persons with Disabilities. **Key Card Application and payment should be mailed to Milwaukee County Office for Persons with Disabilities—NOT to Easterseals Southeast Wisconsin**. Detailed instructions are located on the Key Card Application.

Medications & Health Care

Easterseals staff will not be responsible for administration of medications to participants. If a participant will need medication during a program time, it is their responsibility to self-administer or make arrangements for a caregiver to coordinate administration. **Easterseals staff will also not be responsible for personal cares during the program.** If a participant needs assistance with toileting or other personal cares, a caregiver **MUST** attend with the participant. The health and safety of our participants is very important to us. Please complete the Annual Information Form (AIF) carefully so that we have as much information as possible. Our staff makes every effort to manage risks and set guidelines for safe recreation. However, our staff are not trained medical professionals. In the event of a medical situation, staff will respond with first aid when appropriate. If an injury or medical situation more serious than a minor cut or bruise occurs, a staff member will call to notify the parent/guardian first, and if they are unavailable, the emergency contact person next.

It is critical that this contact information is up-to-date on the AIF. If there is a medical emergency, staff will call 911 first, then notify parent/guardian or emergency contact.

Transportation

Participants are responsible for their own transportation arrangements. Easterseals staff will **ONLY** be present during the scheduled program times listed in the program guide. **Participants should plan to arrive NO EARLIER THAN 15 MINUTES prior to the start time of any program(s) or dance(s).**

Inclement Weather

Please look or listen for WIL-O-WAY RECREATION CENTER or EASTERSEALS RECREATION CENTER on TMJ4 or News Radio 620 WTMJ for any closing or cancellation due to inclement weather. This applies to programs and special events held at community locations such as bowling alleys.

Participation Grievance Procedure

It is the goal of Easterseals Southeast Wisconsin to ensure that all complaints are addressed and resolved in a timely manner. This complaint resolution process is designed to provide you with easy access to the correct contacts. A participant, guardian, ward, family member, caregiver or other interested party may report a complaint about services provided by Easterseals Southeast Wisconsin within 45 days of the occurrence. The complaint may be expressed verbally, in writing or by any alternative method through which the individual ordinarily communicates. You will not be discriminated against or threatened in any way for reporting a complaint. **For more information or to file a complaint, contact the Client Rights Specialist at (414) 963-5935.**

Americans With Disabilities Act (ADA)

Easterseals Southeast Wisconsin and the Milwaukee County Office for Persons with Disabilities comply with the ADA and will make reasonable accommodations to enable people with disabilities to participate in and enjoy recreation programs. If you need accommodations or would like a copy of this program guide in an alternative format, **please call Easterseals at (414) 449-4444 and ask for a Recreation Supervisor.**

Friday Night Dances



Friday Nights 7:00pm - 9:00pm

PLEASE NOTE: Pay careful attention to the dance dates.

Wil-O-Way Grant

207 Lake Dr., South Milwaukee

June 22	Sock it, Hop it
July 20	Christmas in July
August 3	Jazz in the Park
August 17	Brewers

Moose Lodge

5476 South 13th St., Milwaukee

June 15	Glow-in-the-Dark
June 29	Harley Davidson
July 13	Christmas in July
August 10	Beach Party

Wil-O-Way Underwood

10602 Underwood Pkwy., Wauwatosa

June 29	Harley Davidson
July 13	Christmas in July
July 27	Grease Lightning
August 10	Beach Party

2018 Key Card Members Dance Pricing

*All pricing includes snacks

\$7 Each Dance

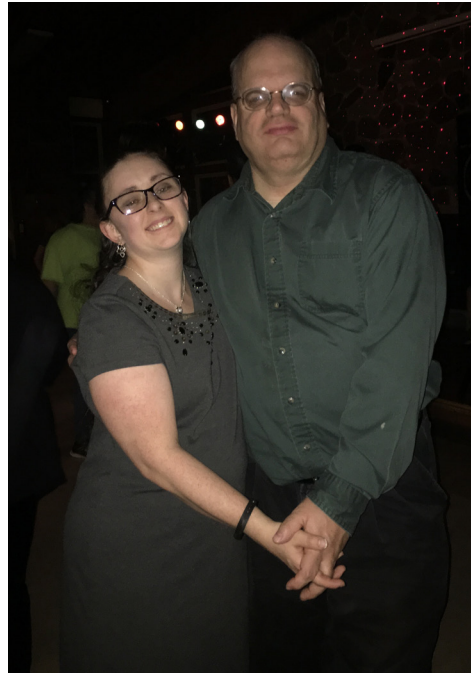
Grant Dance Deal \$25
Underwood Dance Deal \$25
Moose Dance Deal \$25

Each Dance Deal Saves You \$5!

**You MUST be a Key Card member
to take advantage of any Dance Deal.**



Friday Night Dances



Now offering additional snacks for purchase!

Light refreshments still included with each dance

Community Outings

June

Saturday, June 9th
Wehr Nature Center
9701 W. College Avenue,
Franklin, WI 53132
8:00pm-10:00pm
Cost: \$15
Capacity: 20

Join members of the Wehr Astronomical Society for sky viewing. Look through a telescope and learn about the night sky with experts. Cloudy skies will cancel the event.



Saturday, June 30th
Holler Park Swimming Pool
5151 S. 6th Street,
Milwaukee, WI 53221
12:00pm-2:00pm
Cost: \$12
Capacity: 20

Holler Park has a wheelchair accessible pool! Please arrive in your swimming suit! Bring along a towel and a couple snacks to enjoy your afternoon poolside in the sun!



Saturday, June 16th
Boerner Botanical Gardens
9400 Boerner Drive,
Hales Corners, WI 53130
10:00am-12:00pm
Cost: \$15
Capacity: 20

Learn Origami, the ancient art of paper folding, while telling a story about a child that is trying to figure out what to do when they grow up.

We will follow the journey from a sailor to firefighter to pirate to captain of a boat. Each of these folds can be used as a hat. The captain's boat runs into some harsh weather in the end and just the captain's shirt is found.



July

Saturday, July 14th
Milwaukee County Zoo
10001 W. Bluemound Road
Milwaukee, WI 53226
10:00am-1:30pm
Cost: \$20
Capacity: 20

Lions, tigers, and bears—OH MY! Don't forget about the rhinos, giraffes and otters too. Come visit your favorite furry animal at the zoo!



Saturday, July 21st
Festa Italiana
Henry W. Maier Festival Park
200 N Harbor Drive
Milwaukee, WI 53202
11:00am-2:00pm
Cost: \$12
Capacity: 20

Come to Fest Italiana to explore the Italian culture. Enjoy 30 vendors of authentic Italian food and play Bocce ball while enjoying an Italian soda. Our tickets will include ½ priced food items, ½ price soda, a free piece of fresh fruit and entertainment. Please bring spending money to purchase food, drinks and any novelties.



Saturday, June 23rd
Bakers Square
4900 S. 76th St.
Greenfield, WI 53220
11:00am-12:45pm
Cost: \$20
Capacity: 20

Come for lunch, stay for the pie. Enjoy a variety of sweet treats alongside your friends.

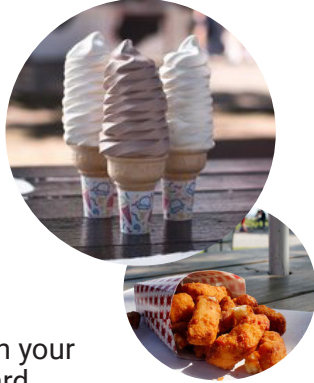


Community Outings

Saturday, July 28th

Northpoint Custard
2272 Lincoln Memorial Dr.,
(at Water Tower Rd.)
Milwaukee, WI
11:00am-1:00pm
Cost: \$15
Capacity: 20

Stroll around on the beach with your sundae from Northpoint Custard. It's a beautiful day for a walk in the park.



Saturday, August 11th

Holler Park Swimming Pool
5151 S. 6th Street,
Milwaukee, WI 53221
12:00am-2:00pm
Cost: \$12
Capacity: 20

Holler Park has a wheelchair accessible pool! Please arrive in your swimming suit! Bring along a towel and a couple snacks to enjoy your afternoon poolside in the sun!



August

Saturday, August 4th

Big Deal Burgers and Custard
1440 S. 84th Street,
West Allis, WI 53214
2:00pm-3:45pm
Cost: \$20
Capacity: 20

Fast-food spit offering gourmet burgers, fried cheese curds & frozen custard in unique flavors. This restaurant is completely wheelchair accessible and offers outdoor seating!



Monday, August 13th

MOD Pizza
60 W Town Square Way,
Oak Creek, WI 53154
4:30pm-6:00pm
Cost: \$20
Capacity: 20

Custom artisan style pizzas! Choose from over 30 toppings to design your perfect pizza.



Monday, August 6th

State Fair
640 S 84th St, West Allis, WI 53214
4:00pm-6:30pm
Cost: \$15
Capacity: 20

Kohl's activity day! Enjoy state fair without all the crowd! Gate 3 on 84th street. Please bring money for fair food or any other activities you would like to participate in.



Advance registration—at least 2 weeks before the outing—is appreciated. We encourage participants to apply quickly for outings that require tickets or that have a smaller maximum allowed. A Recreation Supervisor will contact you upon receiving your registration to let you know if you've secured a spot in the outing.

Keeping your safety in mind,

**BE SURE YOU ARE REGISTERED FOR AN OUTING
BEFORE ATTENDING!**

If you are not registered for an outing,
staff will not know to expect you.

Wil-O-Way Grant Weekly Programs

207 Lake Drive, South Milwaukee

Special Olympics Bocce Ball

Mondays, June 4th-July 30th

(No program July 2nd)

6:00pm - 8:00pm

\$28 for entire session

Capacity: 20

Come practice your lawn bowling skills learning the game of Bocce Ball and participate in competitions! You will need a Special Olympics medical form on file to compete.



Ceramics Night Owls

Wednesdays, June 6th-August 15th

(No program June 27th, July 4th and August 1st)

5:00pm - 7:00pm

\$55 for entire session

Capacity: 20

Whether this is your first time or you've been attending for years, ceramics is fun for everyone! Each week, you get to paint a piece and then take it home in the next week or two.



To sign up or learn more, please contact Bryan Vattendahl at (414) 847-1951.

Bring a Friend Week (August 6th-10th):

Show your friends what you love to do and offer them a chance to participate with you. Bring a friend to the last class of your program!

(Does not apply to bowling.)

Wil-O-Way Underwood Weekly Programs

10602 Underwood Parkway, Wauwatosa

Join the Easterseals Color Guard!

Tuesdays, June 5th-August 14th

(No program July 3rd)

6:00pm - 8:00pm

FREE Capacity: 10

This program is FREE to all interested participants, however, you must commit to consistent attendance and register to participate. This program is open to recreation participants. Practice flag and marching routines. We are scheduled to perform throughout the year at several sporting events including the Admirals, Bucks and Wave. Routines are simple and easy to learn for individuals at all skill and ability levels. Don't worry, we will teach you!



Groovy Tunes and Moves

Thursdays, June 7th-August 16th

(No program July 5th)

6:00pm - 8:00pm

Cost: \$30 Capacity: 35

Every week we will listen to new music and learn some groovy dance moves that you can show off at the Friday night dances.



Generations Center Weekly Programs

2222 S. 114th Street, West Allis

DIY

Tuesdays, June 5th-August 14th

(No program July 3rd)

6:00pm-8:00pm

Cost: \$45 Capacity: 15

Time to make some summer art projects! Bring your imagination and creativity. This is a DIY class so be prepared to make these projects unique.

Ceramics Club

Thursdays, June 7th-August 16th

(No program July 5th)

6:00pm-8:00pm

Cost: \$55 Capacity: 20

Make masterpieces that reflect who you are as an individual! Each week you will get to paint a dish, figurine, or other ceramic piece. We will fire your piece in the kiln to give it some gleam, and then you will get to take it home!

AMF West Lanes Bowling Programs

7505 W. Oklahoma Avenue, Milwaukee

High Rollers Bowling/Special Olympics Bowling

Wednesdays, June 6th-August 15th

(No program June 27th, July 4th and August 1st)

4:00pm-6:00pm Capacity: 35

Cost: \$22 to register for this session

- Pay \$6.25 to AMF each time you bowl -

Special Olympics bowlers will need a 3 game minimum each week. Come practice your bowling skills and participate in competitions! You will need a Special Olympics medical form on file to compete. To sign up or learn more, please contact Bryan Vattendahl at (414) 847-1951.

Bowling Bash

Thursdays, June 7th-August 16th

(No program July 5th)

4:00pm-6:00pm Capacity: 35

Cost: \$22 to register for session

- Pay \$6.25 to AMF each time you bowl -

**Our bowling programs fill up very quickly!
Register and submit payment promptly if you wish to participate.
Absolutely no late registrations will be accepted.**

Arrive no
earlier than 15
minutes prior to
the starting time!

DOUBLE CHECK
the program time!

ABSOLUTELY NO DROP-OFFS!

***Staff is not prepared to monitor
participants more than 15 minutes
prior to the start of any session!***



Generations Center Sunday Programs

2222 S. 114th Street, West Allis

June 10th

Ice Cream Sundae

I scream, you scream, we all scream for ice cream! If ice cream is your favorite treat on a hot summer day, then Ice Cream Sundae is where you should be! We will have a variety of toppings and ice cream flavors for you to make your perfect sundae.



June 17th

Game Day

Monopoly, Bingo, Uno. Today is game day. Bring a game, play a game.

June 24th

Brewer Spirit Day

We're right in the middle of baseball season—show pride in your favorite team! Wear your favorite team and play some baseball activities!

July 8th

B-I-N-G-O

Join us for a bingo party! Win some prizes and have some fun! Today is a great day for Bingo.



July 15th

Fly-a-Kite Day

The weather is warm this time of year, so let's go on outside! We'll enjoy the sunshine and fly colorful kites! In the event of inclement weather, we will make a simple kite project that you may enjoy another day.

July 22nd

Canvas Art

Today is the day to find that inner artist. Let's get jazzy with some cool canvas artwork. Bring a snack and a story to share with a friend.

July 29th

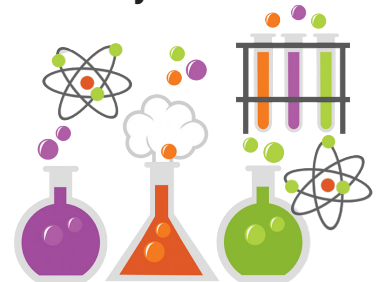
Personalized Pizza

Dough, sauce, cheese, pepperoni, sausage and more! What topping combination will you come up with? Become a chef for the day and create your own personalized pizza!

August 5th

Science Experiment Sunday

Watch it fizzle, bubble and explode with colors. Let's get our hands dirty and dive into simple science experiments.



August 12th

B-I-N-G-O

Play your favorite game for a chance at some prizes!

Each class is 1:00pm - 4:00 pm

Cost: \$15 each

Capacity: 24 people

Sunday Funday Deal:
Sign up for all 9 programs & save \$15!

Adult Day Services

Care you can count on

Easterseals' Adult Day Service is designed to preserve independence, increase socialization, and enhance the quality of life of our participants and their caregivers. Choosing the right day program can be challenging; Easter Seals is here to support and welcome you into one of our Adult Day programs.

Programs

Adult Day Services are conducted in a friendly, supportive and positive atmosphere designed to provide life-enriching experiences for every participant. Caring, experienced staff provide person-centered services and instruction that promote health, safety and increased opportunities for access, choice and inclusion in the community.

Participants

Adult Day Service is open to adults with developmental disabilities who require assistance and supervision, but wish to maintain their independence. This includes individuals:

- who would benefit from person-centered and structured programming
- who require supervision or assistance with activities of daily living
- who require therapeutic structure, supervision and intervention due to cognitive impairments
- whose family and/or caregivers need respite care

Admission is determined through evaluation of a potential participant's needs and interests, in conjunction with a formal assessment.

Services

A variety of services are available for participants including:

- Personalized care based on individual needs
- Medication administration
- Activities that are meaningful and purposeful
- Health and wellness promotion

Meals

Participants bring their own lunches to the program. Afternoon refreshments are provided by Easterseals and prepared by participants with staff assistance.

Cost

The price of receiving care is determined on a full day's participation. Easterseals accepts Family Care or private pay. For more pricing and funding information, contact Rachel Matt, Respite Services Manager at (414) 963-5992.

Days, Hours and Locations

Easterseals Adult Day Programs are open Monday through Friday from 7:30 a.m.-3:30 p.m., with extended hours available.

Contact Information & Locations

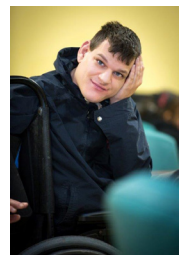
To make a referral or to request additional information, please contact Rachel Simon, Respite Services Manager at (414) 963-5992.

West Allis
2222 S. 114th St.
West Allis, WI 53227
(414) 963-5951

Kenosha
7101 53rd St.
Kenosha, WI 53144
(262) 764-2643

Wauwatosa
7111 W. Center St.
Wauwatosa, WI 53210
(414) 536-9050

Waukesha
201 Wisconsin Ave.
Waukesha, WI 53186
(262) 953-2260



Employment Training Programs

Want to learn valuable job skills in an exciting hospital environment?



Project SEARCH is a business led program designed to facilitate a variety of meaningful rotations and experiences for people with physical or cognitive challenges. This workforce initiative develops competitive, marketable, and transferable skills for employment through:

- Soft Skills Development
- Career Exploration
- Hands on Training
- Innovative Adaptations

More than 80% of our graduates have found community based employment in the last five years.

Please contact Allyson O'Leary at Easterseals Southeast Wisconsin to schedule a tour and for Project SEARCH information: allysono@eastersealswise.com or (262) 953-2206

LilyWorks Catering and Training Kitchen

www.lilyworks.org

Conference, Banquet and Meeting Rooms

Catering

Commercial Kitchen Rental

Food Service Training

Our state-of-the-art commercial kitchen serves the community on- or off-site.

Training Leads to Jobs! Adults with disabilities learn hands-on food service skills by preparing, serving and catering at on-site and off-site events.

For more information about training opportunities or for catering your next event, call (262) 547-6821.



Save the Date!

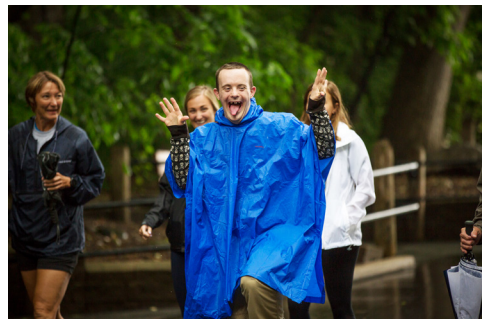


Wednesday, June 27th, 5-8pm
Milwaukee County Zoo

\$15 registration includes parking and all day zoo admission!

Kids under 12 are FREE!

Enjoy the zoo and walk to raise awareness.
Support area families impacted by disabilities!



For more information, go to www.walkwithme.org/Milwaukee
or contact Emma at emmap@eastersealswise.com.



Easterseals Southeast Wisconsin
2222 S. 114th Street
West Allis, WI 53227



in collaboration with
Milwaukee County
Office for Person with Disabilities

Non-Profit Org.
U.S. Postage
PAID
Milwaukee, WI
Permit No. 2781



www.eastersealswise.com

