

Our Mission

Easterseals has been the indispensable resource for people and families facing disability. Through the work we do, Easterseals is changing the way the world defines and views disability by making profound, positive differences in people's lives every day.

Behavioral Therapy Services

Community based, located at School Readiness Programs

Birth to Three Program

158 State Street, Meriden
24 Stott Avenue, Norwich

Center for Better Hearing

22 Tompkins Street, Waterbury
690 Main Street South, Suite 4, Southbury
158 State Street, Meriden

Children's Academy

West Campus

22 Tompkins Street, Waterbury

East Campus

128 Avenue of Industry, Waterbury

Meriden Campus

125 Broad Street, Meriden

The Children's Center of Greater Waterbury Health Network

172 Grandview Avenue, Waterbury

Driver Assessment Program

158 State Street, Meriden

Employment and Community Services

Watertown Campus

320 Sylvan Lake Road, Watertown

Danbury

400 Main Street, Danbury

Lions Low Vision Program

158 State Street, Meriden

Medical Rehabilitation Services

158 State Street, Meriden



Easterseals of Greater Waterbury

ANNUAL REPORT 2019



www.easterseals.com/waterburyct

A message from our President, Loraine C. Shea



In 2019 Easterseals celebrated its 100th Anniversary! Not many organizations have had the honor of celebrating an entire century of impact. At the local level, we share in this

rich history by helping individuals with disabilities and their families address life's challenges and achieve personal goals. Over this year Easterseals of Greater Waterbury continued on its strategic journey by expanding services, improving infrastructure and impacting over 7,000 community members and their families. At the core of what we do is a knowledgeable, talented, and caring group of employees, a dedicated Board of Directors, and committed donors, funders and community partners.

I hope you take a moment to read through our annual report which outlines Easterseals accomplishments, challenges and service to the community over the last fiscal year. As we approach a new decade, we do so with optimism, excitement and the knowledge that we make profound, positive differences in people's lives every day. As always, we look forward to working with those of all abilities who have limitless possibilities!

Loraine C. Shea
President

2019 Accomplishments

Lions Low Vision Program



Through a partnership with The Lions Club, Easterseals is now offering a new program to help individuals diagnosed with low vision. The Lions Low Vision Center, located at our Medical Rehabilitation Center at 158 State Street in Meriden, assists individuals whose degree of vision loss can no longer be corrected by eye glasses, medicine or surgery. Through this partnership, Easterseals is able to provide our patients with various low vision aids free of charge. Funding for the aids and devices is donated by the more than 50 local Lions Clubs in Fairfield and New Haven Counties. Combining resources with other organizations, whose mission aligns with Easterseals, help to make serving our community a true collaborative effort.



NAEYC Accreditation

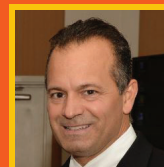


Children's Academy – East Campus achieved a five year accreditation from the National Association for the Education of Young Children (NAEYC). NAEYC works to promote high-quality early learning for all young children, birth through age 8, by connecting early childhood best practice, policy, and research. Accreditation by NAEYC is considered the gold standard for early learning programs.

Expansion of Danbury Programs

Easterseals Employment and Community Services expanded to the Danbury community in February of this year. With two locations in the downtown area, we are now serving adults in a Day Services Program as well as a Supported Employment Program. As part of this expansion, Easterseals now operates The Greenery Café, open daily to the public during the lunch hour. The individuals we serve learn competitive job skills through their supported work in the Café. Interacting with the public and development of food service skills including food preparation, order taking, cooking as well as clean up are all part of the training. Expansion into Danbury has allowed Easterseals to serve an additional 40 individuals with more room to grow! It has also provided the opportunity to expand into other supported employment opportunities including janitorial services and lawn care services.

Board of Directors



Curtis Audibert,
CPA, Treasurer



Mark Graveline,
Chairman



Kellie Jandreau,
Vice Chairwoman



Paul Jessell,
Esq, Secretary



Kenney
Johnson



David
Miller



Tamara Nyce,
Esq.



Sandra Roosa,
M.S., R.N.



David
Segal



Robert
Stabile



Robert
Teittinen



Jim
Watkowski



James S. Zoldy,
Jr.

Safe Space

According to the CDC, 1 in 6 children aged 2-8 years old have a diagnosed cognitive, behavioral or developmental disorder. At the Children's Academy, we are doing our part to ensure that children recognize their feelings and know there is a safe place for them to go when they need to sit quietly and shut down their minds for a few moments. This space provides an area where they are relieved from moments of stress or feelings of being overwhelmed. This spot was created for children to take a break so they can learn how to self-regulate their emotions, impulses, and behavior. Then when they feel that they are ready to come back to the group, they rejoin their classmates and can then better participate in the learning experiences of the classroom.

Together We Can Make a Difference



Thank You to Our Community Partners and Grant Funders

- **Thomaston Savings Bank** – Support of the Children's Academy playground
- **James H. Napier Foundation** – Support of Birth to Three Services
- **Comcast Adaptive Technology Grant** – Support of the Easterseals Center for Better Hearing
- **Main Street Community Foundation** – Bradley Henry Barnes and Leila Upson Barnes Memorial Trust – Support of the Easterseals Center for Better Hearing
- **Connecticut Health and Educational Facilities Authority** – Support of the Children's Academy construction
- **MacDermid Performance Solutions** – Support of the Children's Academy
- **Courtyard by Marriott Waterbury** – Organizational Support



Putting People to Work

Companies like Curtis Packaging are providing a safe, welcoming and inclusive environment for the individuals we serve to do meaningful work. Curtis opened its warehouse in Sandy Hook, CT, for Easterseals individuals to participate in packaging work along-side of their long-time employees. Easterseals Community Inclusion Specialists work with the individuals teaching them the skills they need to eventually move into competitive employment. We are grateful to Darlene D'Amico, Traffic Manager at Curtis, who helped make this opportunity possible. At first it was challenging for Darlene to accommodate individuals with disabilities in the workplace, now she can't imagine the work environment without our program participants.

2019 Financial Operations Report

Year ending August 31, 2019 (with comparable totals for 2018) (unaudited)

OPERATING SUPPORT AND REVENUES

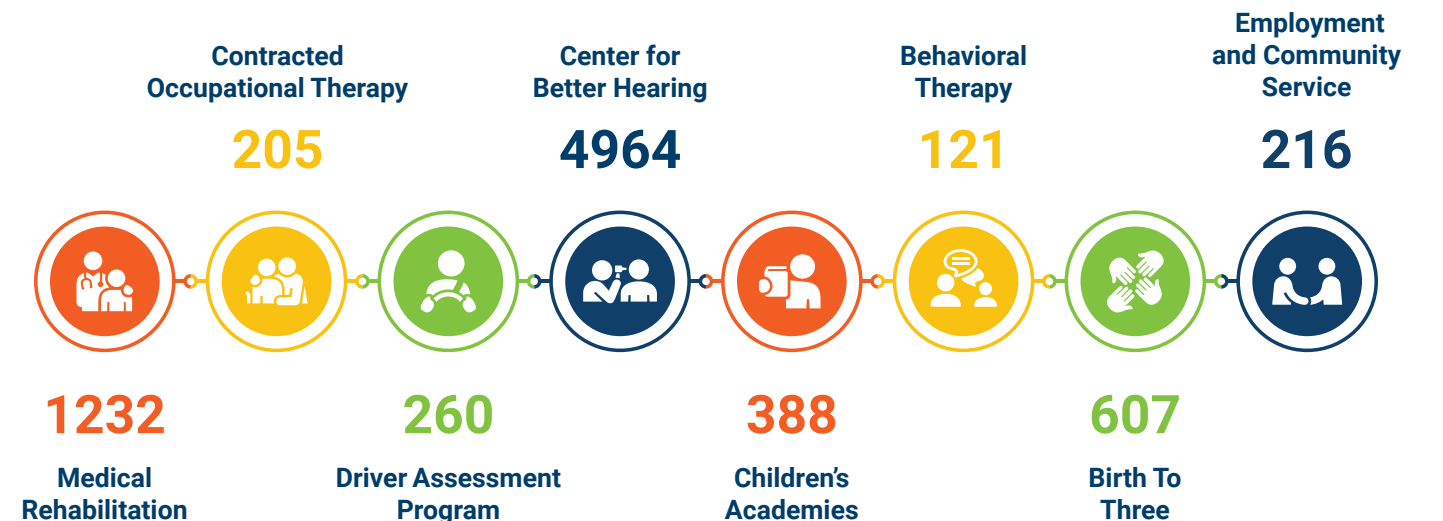
	2019	2018
Public Support	\$202,602 2%	\$233,216 2%
Vocational Training and Educational Programs	\$7,759,017 62%	\$7,303,746 61%
Childhood Development and Behavioral Services	\$1,940,840 16%	\$2,116,339 18%
Medical Rehabilitation Services	\$2,314,444 19%	\$2,095,901 18%
Other Grants & Other Income	\$280,124 2%	\$171,497 1%
Total	\$12,497,027 100%	\$11,920,699 100%

OPERATING EXPENSES

Staffing, Payroll Taxes and Employee Benefits	\$10,561,096 77%	\$10,356,820 77%
Professional Services and Operating Supplies	\$1,538,867 11%	\$1,459,173 11%
Occupancy and Interest	\$892,784 6%	\$782,973 6%
Transportation Service	\$382,752 3%	\$394,951 3%
Depreciation	\$414,391 3%	\$422,060 3%
Total	\$13,789,890 100%	\$13,415,977 100%

Net Operating Surplus/(Deficit)	\$(1,292,863)	\$(1,495,278)
Gain on Fixed Asset	\$2,130	\$364,080
Community Outreach Programs	\$(156,374)	\$(149,859)
Net Investment Revenues	\$2,007,461	\$2,685,741
Combined Surplus	\$560,354	\$1,404,684
Capital Improvements	\$295,367	\$502,172

In Fiscal Year 2019, Easterseals of Greater Waterbury provided direct services for 7993 individuals. Easterseals programs stretch well beyond individuals served directly, touching the lives of parents, family members and friends.



Annual Report Donors

A special thanks to our compassionate sponsors, donors, and grant funders. Your generous contributions to Easterseals have positively enriched the lives of many children and adults with disabilities and special needs. Thank you for caring!

\$75,000

Connecticut Health and Educational Facilities Authority

\$25,000

Main Street Community Foundation – Bradley Henry Barnes AND Leila Upson Barnes Memorial Trust

\$5,000 - \$9,999

Comcast Adaptive Technology Grant
Courtyard by Marriott – Waterbury
Ion Bank / Ion Bank Foundation
MacDermid Performance Solutions
The Leeveer Foundation
Thomaston Saving Bank / Thomaston Saving Bank Foundation

\$2,500 - \$4,999

Access Rehab Centers
The Cly-Del Manufacturing Co.
James H. Napier Foundation
Liberty Bank
Treadwell Corporation

\$1000 - \$2,499
A.E. Olsen
American Copy Service Center, Inc.
Bank of America
Brown & Wimler Construction
Carling Technologies
Carmody Torrance Sandak & Hennessey LLP
Chittenden Insurance Group
Comcast Spotlight
Connecticut Community Foundation (Give Local Campaign)
Demsey Manufacturing Co., Inc.
Diagnostic Radiology Associates
Dunkin' Donuts – The Batista Family
Edward Segal, Inc.
Harvard Pilgrim HealthCare (in honor of John Calkins)
Hillview Property Maintenance LLC
Jack Hogan
Attys. Joseph & Nancy Kinsella
Lindley Food Service
Litchfield Bancorp
Lorensen Auto Group
Dr. Eugene & Judith Mirrer
The Next Street
OptiCare Eye Health Centers, Inc.
Palladin Precision Products
The Schuster Group
Lorraine Shea*

Slavin, Stauffacher and Scott Attorneys at Law
Laurin Traub
Voya Financial
Webster Bank

\$500 - \$999

a.i.Tek Instruments, LLC
Albert Bros. Inc. / Cornerstone Realty
Ametek Inc. / Haydon Switch
Thomas Bentz
Bercham, Moses & Devlin
Bozzuto Associates
Mark Briggs*
Ralph Carpinella
C-B Manufacturing Tool Co., Inc.
E.S. Metal Fabrications
The Eastern Company
Fascia's Chocolates
Gem Manufacturing
Gen El-Mec Associates, Inc.
Health Complex Medical
Dr. Regina Hillsman
Jaci Carroll Staffing Services
Elsie Mannweiler
O'Hara-Feeley Family Fund (through Connecticut Community Foundation)
Pilgrim Furniture City
Rotary Club of Watertown
Simple Play/Frontier
John & Lois Sullivan
Sullivan's Northwest Hills Automotive
Viso Bello Day Spa
Waterbury Health
The Washington Trust Company
James Watkowski

\$250 - \$499

Bill Wildman Floor Covering
Atty. Mark & Karen Dost
Executive Kia
GSS Industries
Greer Manufacturing, Inc.
Paul Jessell, Esq.
Carolee Kalita*
Kissel, Kneale & Tobin, Inc.
Label One Corporation
Anne McLaughlin
Gary Nielsen*
Neubert Pepe & Monteith PC
Pepe's of Waterbury, LLC
Prospect Congregational Church
Rotary Club of Waterbury
Southwood Auto Parts

Westwood Women's Health (Dr. DeFrancesco/ Dr. Pearlstone)

\$100 - \$249

Affordable Power Wash
Advartec
Al's Plumbing & Heating LLC
Alderson – Ford Funeral Home
All Lawn Care – NVLM Inc.
Allume Home Care
Anmar International LTD (in honor of Matthew Anania)
Atlantic Steel & Processing Inc.
Athena Health Care Systems
Baribault Oil, Inc.
Biondi and Rosengrant, LLC
Bradshaw Chrysler Jeep
Braxton Manufacturing Co. Inc.
Broderick Law Firm LLC
Brooklyn Bakery Company
Brookside Memorial
Buckmiller Mengacci Funeral Home
Budwitz & Meyerjack CPA's
Bunker Hill Pharmacy
Dr. Annette Burton*
Calcagni Real Estate
Jaime Calo*
Carpin Manufacturing
CellMark USA, LLC (in honor of Gabriela Cessario)
Chase Parkway Memorial (The Albin Family Funeral Home)
The Cheshire Lions Club
Copyrite Printing
Courtney Honda
Coviello Plumbing and Heating
Dayton Construction Company, Inc.
Diamond Roofing Specialists, Inc.
Dibble & Rossi CPA's PC
DiGiorgi Roofing & Siding Inc.
Law office of Frederick Dlugokecki
Glenda Duke*
Dumouchel Paper Company
Envirocare Pest Control, LLC
Rosetta Ferucci
Fitzpatrick, Mariano, Santos & Sousa PC
Frankie's Family Restaurant
G & L Excavating, Inc.
Giordano Cabinets
H & T Waterbury, Inc.
The Harold Leeveer Regional Cancer Center, Inc.
Harper and Whitfield, PC
Stacey Hofmann*
Industrial Riggers

We apologize for any errors on our donor list. Please contact Carolee Kalita at ckalita@eswct.com with any corrections.

Drs. Farida & Ghulam Jilani
Kalita Insurance Agency, Inc.
Hometown Pizza III
Anne Kinder
L.F. Powers Petroleum Products
Labbe Heating & Cooling
Linked Media
Lions Club of Waterbury
Lombard Group
Henry Long
Lovley Development Inc.
Mattatuck Industrial Scrap Metal
Lois McCutcheon*
Mercury Energy
Millennium Computer Services of Connecticut LLC
Attys. Minnella, Tramuta & Edwards
Morrissey, Morrissey & Mooney, LLC
Mule Security & Electric, Inc.
North American Theatix, Ltd.
Northeast Orthopaedic & Hand Surgery PC
Rick & Susan O'Brien
Mayor Neil O'Leary
Personal Touch Car Wash
Physicians for Women's Health
PowerStation Events
Prospect Congregational Church
John, Patty & Joe Raymond
Republican American
Walter Rogers
Jay Christopher Rooney
S & P Carting
Sandy & Jack Senich
James & Marie Simonetti
SMA (Smaller Manufacturers Association of Connecticut, Inc.)
Robert Stabile
Starion Energy
Russell S. Stutsky, Esq.
Suburban Commercial, Inc.

Summa Construction
Take 2 Inc.
Torrcoco
Toyota of Wallingford
Traver IDC
Triple Stitch Sportswear
Tynan & Iannone Attorneys at Law
Unimetal Surface Finishing LLC
Village at East Farms
Kerry & Tom Villano
W.H. Pickett Drug Co.
Waterbury Chiropractic Office LLC
Waterbury Lions Club
WEICHERT, Realtors – Briotti Group
Web Solutions
Waterbury Regional Chamber
Dr. Kay Yanagisawa*

\$1 - \$99

Pamela Anderson-Ketcham*
Don Andrews
Curtis Audibert
Namita Bahl*
Kristie Balisciano*
Melanie Billings*
Brian Bonds*
Candy Brainard*
Steve Briotti
Jody Brouillard*
Edna Bruneau
Julika Bylybashi
Josephine Byrolly
Eileen Carroll*
Ellen Carter
Geraldina Castro*
Rebecca DeMaida*
Peg & Hank Durkee
Stephanie Engelhard*

Donald Ensero
Yvonne Feliciano*
Mindy Fricke*
Angelina Garcia
Christine Granja*
Luljeta Halil*
Carmen Hall*
Dr. Samantha Hauser*
Georgina Healy
Kimberly Hernandez*
Melissa Hyland*
Delcia Ifill*
James Ineson
Jillian Jarrell
Deborah Kraus*
Bernice LaRochele*
Dave Gates
Frances Lepore*
Liljana Lico*
Natasha Liriano*
Rosella Longo
Deirdra Lynch*
Mary Mazza*
Sharon McDonald
Chip McKee
Keytza Medina*
Jessi Mengold
Arleen Mendoza*
Kevin O'Donnell*
Ann O'Neill*
Beth O'Sullivan*
Linda Ouellette*
Amy Palmer*
Gege Pelletier*
Peg Perrault
Dr. Allison Phipps*
Karen Phipps
Nina Phipps
Sarah Phipps
Cindy Pirro*
Jeff Raboin*
Tennille Ramos
Dorothy Reardon*
Stevi Rehncy*
Idie Richardson*
Yamayra Rivera*
David Rogers
Sandra Roosa
Jessamine Sargent*
Jessica Sanchez*
Carolyn Smith*
Rebecca Smith*
Carl J. Spadola, DMD
Chris Sponzo
Victoria Stemmer
Taft School
Judy Tourangeau
Patricia Traver
Dorothy Thurston
United Capital Services Corporation
Barbara Valliere*
Christopher Veillette*
Shalzee Velez*
Sarah Zarucha*

Grace

Grace H, from Newton CT, is a bubbly, kind, intelligent girl who has been attending the Easterseals Center for Better Hearing for 7 years. Since she started her journey at Easterseals Grace has been seeing Dr. Kay, an audiologist who has played an integral part in Grace's speech and language development as well as her hearing needs. This year she will be attending MassArt to pursue her passion, something that she has been dreaming about since she was a child. Grace says, "When I do art, I try to create with a purpose and to evoke emotion for the viewer". Easterseals is proud to support Grace with this next stage of her life by granting her a scholarship toward her higher education. Grace is on her way to achieving her goals.

