

**Easterseals Southern Georgia, Inc.**  
**Financial Summary**  
**September 1, 2015 - August 31, 2016**

<b>ASSETS</b>	<b>LIABILITIES &amp; NET ASSETS</b>
Cash	\$ 418,894
Restricted Cash	\$ 665,584
Endowment Account	\$ 42,930
Megan's House Building Fund	\$ 282,157
Accounts Receivable	\$ 1,008,835
Other Assets	\$ 188,039
Property & Equipment	\$ 1,323,798
<b>TOTAL ASSETS</b>	<b>\$ 3,930,237</b>
	Current Liabilities \$ 1,379,603
	Long Term Debt \$ 220,897
	Temporarily Restricted Net Assets \$ 247,762
	Unrestricted Net Assets(Designated) \$ 189,111
	Unrestricted Net Assets(Undesignated) \$ 1,850,764
	Permanently Restricted Assets \$ 42,100
	<b>TOTAL LIABILITIES</b>
	<b>&amp; NET ASSETS</b>
	<b>\$ 3,930,237</b>

<u>INCOME</u>	<u>ACTUAL</u>
Donations - Cash	\$ 79,313
Donations - Non Cash	\$ 10,000
Donations - Building Fund	\$ 23,567
Special Events	\$ 52,325
United Way Allocation	\$ 24,993
Government Grants/Fees	\$ 5,356,284
Program Service Fees	\$ 6,704,517
Other Income	\$ 239,381
<b>TOTAL INCOME</b>	<b>\$ 12,490,380</b>

<u>EXPENSES</u>	
Direct Services	\$ 11,449,735
Fund Raising	\$ 26,552
Management & General	\$ 908,745
National Membership Fees	\$ 41,923
<b>TOTAL EXPENSES</b>	<b>\$ 12,426,955</b>

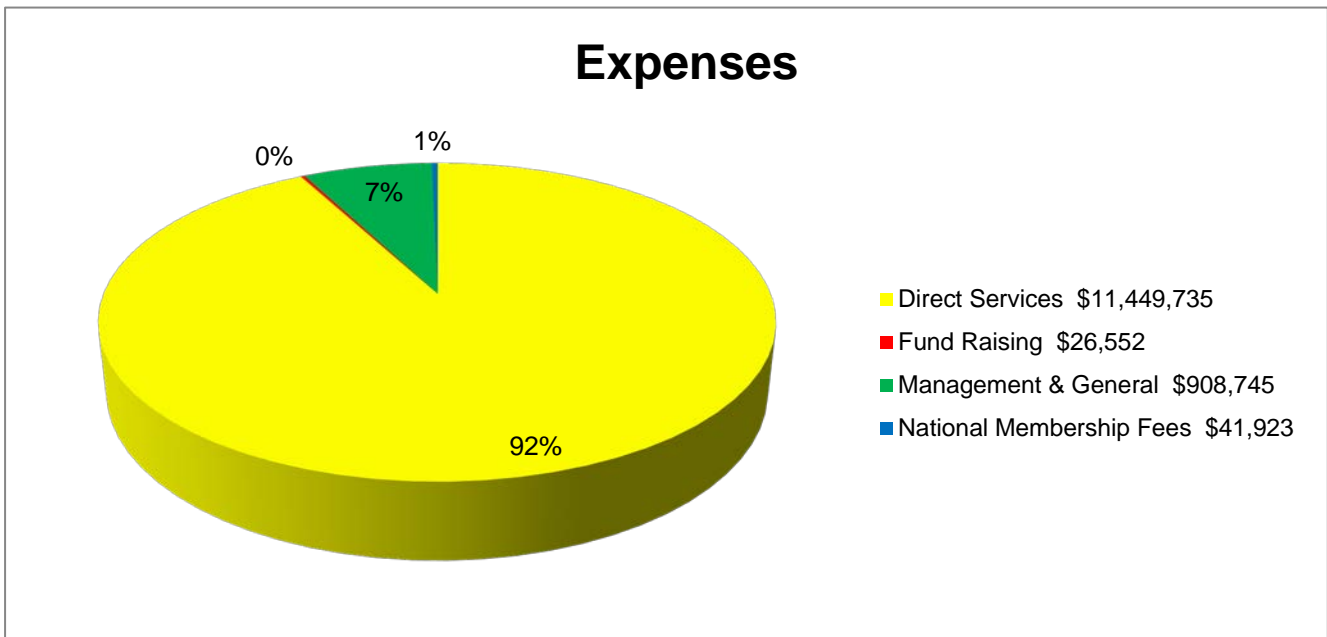
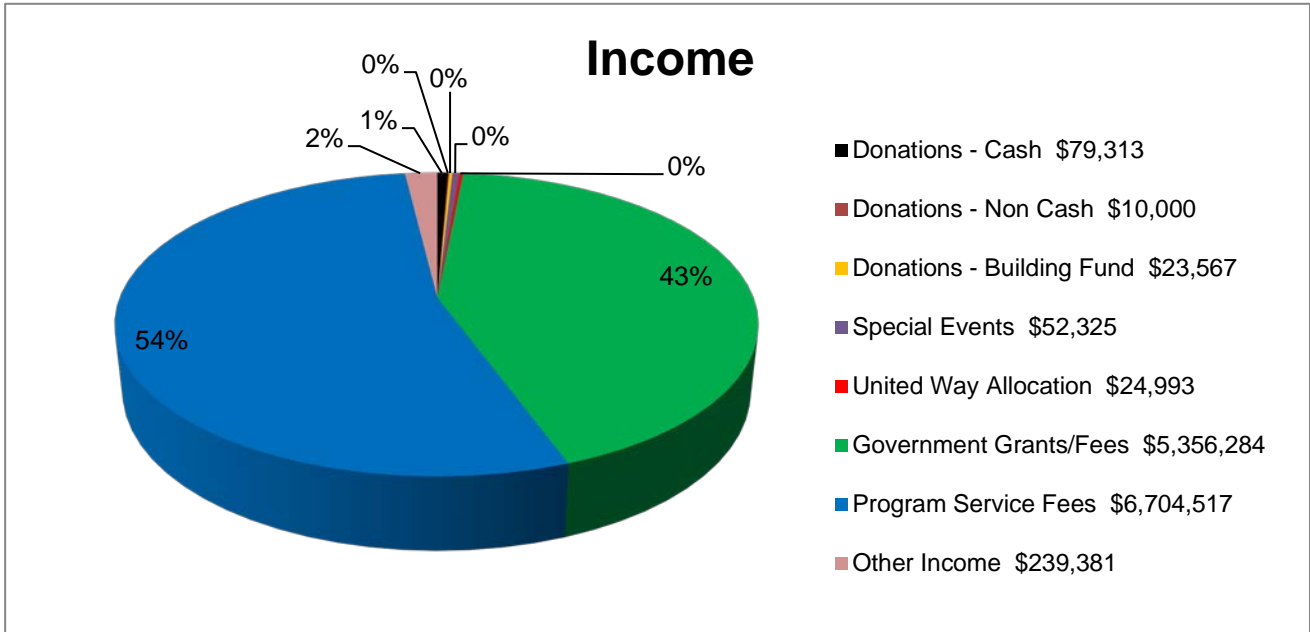
<b>TOTAL INCOME</b>	
<b>OVER EXPENSES</b>	<b>\$ 63,425</b>

NOTE: Does not include financial information of affiliated HUD housing Corporations.

# Easterseals Southern Georgia, Inc.

## Financial Summary

### September 1, 2015 - August 31, 2016



NOTE: Does not include financial information of affiliated HUD housing Corporations.