

TOGETHER WE ARE TELLING OUR STORY



Donna and Mike have three amazing children, Abby, 10, and twins Emma and Liam, 7.

When Emma was 14 months old, she was diagnosed with a tight heel cord in her left leg, which made it impossible for her to walk on a flat foot. It was recommended that she receive physical therapy to help relax and stretch the muscles in her legs.

Donna immediately called Easter Seals RI to seek Early Intervention services for her daughter. The family was delighted by the professionalism of Easter Seals employees.

After Easter Seals Physical Therapist Carol Cagle completed the evaluation, she recommended that Emma see an orthopedist. During her appointment, the doctor suggested having Emma visit a neurologist to see if she'd be a candidate for Botox injections in her legs. At this time she had an MRI which ruled out the possibility that her tight heel cord was a symptom of a brain or spinal cord injury. Following her MRI, Emma received the Botox injections in both legs which helped by dampening the response of the nerve that controls the lower leg.

"Carol went with us to the doctor appointments to help me understand the medical terminology, and for moral support," said Donna. "The MRI was a difficult experience for the family."

Over the next several weeks, Emma was serial casted to stretch her heel cord, fitted for a brace which she would wear until she was five, and she continued seeing Carol weekly at home for Physical Therapy. Through her weekly play-based sessions, Carol would work with Emma, teaching her how to balance and helping to strengthen her muscles. When Emma turned three, she became too old for EI, but continued her therapies through Easter Seals Outpatient Program.

Due to her success in EI, Emma's therapies were reduced to twice a month, but Carol was able to increase the intensity of services received. Emma started walking forward and backward on a treadmill using the heel-to-toe walking method. Carol taught Emma the 'penguin walk' to help her stop turning her feet in when walking, as well as balance exercises which continued until she was five years old.

While Emma was at Easter Seals, the family noticed that her 18-month-old brother Liam was not speaking. An evaluation found that Liam understood what was being said to him, but couldn't communicate or express his feelings back. Liam started receiving weekly speech therapy sessions with EI Speech Pathologist Cyndi Dewhurst. Through each sessions, Cyndi helped Liam progress to a place where he could communicate with his family. One of his favorite therapy activities was blowing bubbles. During this session, Cyndi would blow bubbles and Liam would pop them. When popping the bubble he was encouraged to sound out the word "pop." By the time Liam turned three he no longer needed speech therapy.

"It was hard to stop services for Emma and Liam because the staff becomes part of your family. They made sure to include our oldest daughter Abby in the twin's therapy sessions so she felt like she was part of the process too," said Donna. "Not only did they help us by providing services for our children, but they were advocates for our family."

Today, Emma and Liam are in second grade. Emma loves to play soccer and Liam loves playing basketball and kickball.



TOGETHER WE ARE LEADING THE WAY

We gratefully acknowledge the hard work accomplished by our Board of Directors. This dedicated group of volunteers willingly gives their time, talent and treasure to help ensure the success of Easter Seals RI.

Tracey Colucci, *Chairman*
Century 21 Access America

Cindy Almonte, *Vice Chair*
A Quick Tire Service

George McAuliffe, *Treasurer*
Mews Tavern

Dan Sheldon, *Secretary*
Sheldon Sports Agency, LLC

Dr. Michael Ferry
Ferry Orthodontics

Michael Goduto
CVS Health

James Lawrence
Lawrence & Associates, Inc.

Denise Patsos
Community Advocate

Renee Pearce
Daniel Pearce Builders

Kimberly St. Onge
Community Advocate

Debbie Waddington
Century 21 Access America

TOGETHER WE ARE GIVING BACK

CORPORATE & ORGANIZATIONAL GIFTS

Our President's Council recognizes businesses and organizations that contribute \$1,000 or more in a fiscal year.

Anonymous (1)
A.C. Moore
Bank RI
Blount Fine Foods
Civil
Century 21 Access America
CVS Health
Daniel Pearce Builders
Danielle and Michael Haxton Family Fund
Denali Wakefield LLC
Distefano Brothers Construction, Inc.
Ferry Orthodontics, Inc.
Fortney & Weygandt, Inc.
Friendly's #0885
Friendly's #1017
Horizon Beverage Company
Icon ID
Inspire Wellness Spa & Medical Center
Lawrence & Associates
McLaughlin & Moran
Mew's Tavern
Narragansett Yacht Repair

NORR Architects
Engineers and Planners
NYA, LLC
Performance Food Service
Rhode Island Distributing Co., LLC
South County Commons
Tickled Pink Photography
Tiger Rug Co.
Tony's Seafood
T's Restaurant Group
United HealthCare Services, Inc.
The Washington Trust Company
William Starck Architects Inc.
Wind and Fire Jewelry

FOUNDATION GIFTS

Andre D'Auteuil Family Foundation
Billy Andrade Brad Faxon
Charities for Children, Inc.
CVS Health
Gabrielle Dinsmore
Heart and Hope Fund
The John E. Fogarty Foundation
Lester F. and Beatrice R. Morse Memorial Fund
The Rhode Island Foundation
Rodgers Family Foundation
Rotary Club of Wakefield
Roy T. Morgan Foundation
State of Rhode Island
and Providence Plantations
Town of South Kingstown

INDIVIDUAL GIFTS

Our President's Council recognizes our generous donors who contribute \$1,000 or more in a fiscal year.

Dignity (\$2,500+)
Jim & Rachel Lawrence

Ability (\$1,000+)
Cynthia Almonte
Gina Catalano
Anthony & Tracey Colucci
Paul & Kristen Disanto
Dr. Michael & Jen Ferry
Judy & Russ Fortier
Larry J. Gammon
Michael & Theresa Goduto
Michelle Gosellin
Eileen Kelly
Amy & Walter Ortiz
Daniel & Renee Pearce
Michael & Laurie Riley
Dan & Cindy Smalley
Stephen & Barbara Tetzner
Gwendoline Woods

SPECIAL ACKNOWLEDGMENT

We gratefully recognize 826 additional gifts received under \$1,000. Too numerous to list individually, we appreciate the warmth and support our donors demonstrate in making these gifts.

We make every effort to acknowledge our donors appropriately. If we have made an error, please contact the Development Office.

Gifts received after August 31, 2015 will be acknowledged in the 2016 Annual Report.



EASTER SEALS RHODE ISLAND
213 Robinson Street, Wakefield, Rhode Island 02879
401.284.1000 (p) | 401.284.1006 (f)
www.easterseals.com/rhodeisland
www.facebook.com/EasterSealsRI



TOGETHER WE ARE EASTER SEALS RI



2015 Annual Report
For 12 months ending August 31, 2015

Dear Friends,

Since our beginning, Easter Seals RI has been inspired by the people we serve. We are determined to lead with confidence and create a world where all people can achieve their full potential. This is very personal and heartfelt work that enables the children and families we serve to work toward independence.

Together we are a growing family. Any and all of us will be touched by disabilities in our lives. And, Easter Seals will be there with your family to help you through the challenges. We offer programs that see the whole you . . . not just the disability or challenge. We see your family, your community, and your unique needs. We empower you to keep reaching for the next milestone.

Together we are driven to achieve. Our goal is nothing short of revolutionizing how the world understands and addresses disabilities. To that end, we continually rally the resources of our greater community to create collaborations, increase awareness, and boost fundraising so that we are able to serve more people with disabilities and special needs. Our staff, volunteers, donors and friends believe in our mission and in the potential of each person we serve. Disabilities touch all of us and we work with communities to achieve extraordinary results.

Together we are paving the way. Disabilities are visible and often invisible, making it even more important for our society to understand and address all aspects of 21st-century disabilities and appreciate people who have them. Every day is a new opportunity for Easter Seals to help the world take a second look at disabilities as a normal part of life.

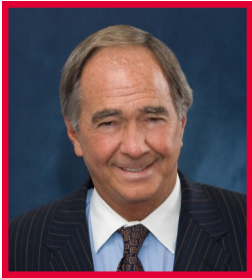
Thank you to everyone who joins us in the critical work of helping people and changing the way the world views disabilities. Together we are making a difference. Together we are stronger. Together we are working toward independence.

Together we are Easter Seals Rhode Island.

Sincerely,

Larry J. Gammon, President & CEO

Tracey Colucci, Chairman of the Board



Easter Seals Rhode Island provides exceptional services to ensure that children and young adults with disabilities and special needs and their families have equal opportunities to live, learn, work and play in their communities.

TOGETHER WE ARE MAKING AN IMPACT



RAISING AWARENESS & FUNDS TOGETHER

Spreading our passion and mission throughout Rhode Island kept us very busy this year. We enjoyed a great response from the community through special events like All In Good Taste, Kentucky Derby Party, Ferry Orthodontic Scavenger Hunt, and Mews Tavern 6.9K. In addition, we continued to receive outstanding support from CVS Health through numerous events including Walk With Me, their Annual Golf Tournament, Red, White & Brew, and Clam Cakes & Chowder. Each of these events brought new individual and corporate support and opportunities that strengthen and grow our programs. In turn, families continue to receive the support they need to thrive. In April, Veterans Count Rhode Island was established. Veterans Count, a philanthropic program of Easter Seals, provides critical, timely financial assistance and services when no other resource is available to veterans, service members and their families.

PLANNING FOR A BRIGHT FUTURE

Our Early Intervention program, which provided services to more than 400 children, now provides nationally-recognized, family-centered assessments and feeding therapy for children with medical and behavioral needs. Sequential Oral Sensory training provided our therapists with advanced feeding therapy proficiency so they can treat a wider range of children. Through this process, parents are learning how to help expand their children's food choices at home and in the community.



BUILDING STRONG RELATIONSHIPS WITHIN THE COMMUNITY

In the last year, Easter Seals RI has received overwhelming support from several foundations in the state. Nearly \$45,000 was given to our programs from Roy T. Morgan Foundation, Gabrielle Dinsmore Heart & Hope Fund, The John E. Fogarty Foundation, and many others. Involvement from these local foundations allow services to continue so our families can benefit from group therapies such as the Visual Learners classroom and specialized feeding groups. In addition, a gift from the Rhode Island Foundation will fund training from Partners in Philanthropy which will provide organizational development support to our Board of Directors.



"It is so rewarding to watch him succeed at so many things. We aren't sure where he would be without Easter Seals. We are thankful for this caring and loving organization that provides therapeutic support for the entire family."

~Vanessa, Mother to Early Intervention client Sam

TOGETHER WE ARE MAXIMIZING OUR RESOURCES

REVENUES

Program Service Fees & Grants	\$1,218,640
Public Support	\$178,806
Other Revenue	<u>\$2,486</u>
TOTAL OPERATING REVENUES	\$1,399,932

EXPENSES

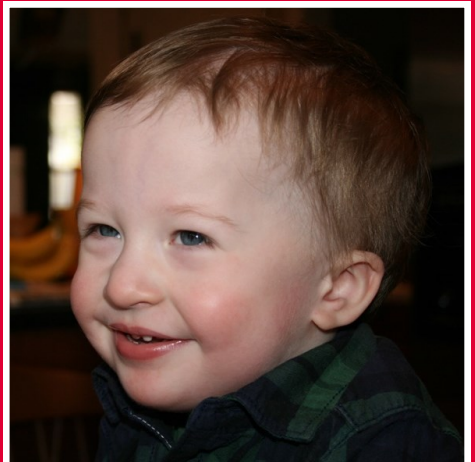
Program Services	\$1,258,238
Support Services	\$142,728
Fundraising	<u>\$62,583</u>
TOTAL OPERATING EXPENSES	\$1,463,549

Our Financial Statement, audited by Baker Newman Noyes, is available at Easter Seals Headquarters.

Please note these financial numbers are unaudited and subject to change.

"Easter Seals has been great to work with. They have not only worked with Ben, but with our family too. It's nice to know there are professionals to help children with special needs and their families."

~Heidi, Mother to Early Intervention client Ben



TOGETHER WE ARE SERVING THE COMMUNITY

PROGRAM	
EARLY INTERVENTION	401
OUTPATIENT PROGRAM	98
TOTAL	499

Easter Seals RI clients are the reason we do what we do. Each client has their own personality and special trait that make them who they are. On the cover, Early Intervention client Ben Reid works with Speech Pathologist Cyndi Dewhurst.