

ADVERTISE OUR ADVERTISERS CONTACT US ABOUT US NEWSLETTER SIGN-UP

I'm looking for....

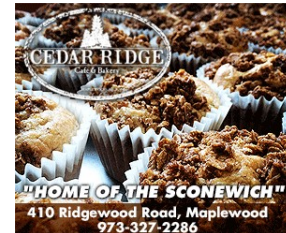
Search



Community **Maplewood**

## From Maplewood's Hammond Map Bldg, Easterseals NJ Helps Adults With Disabilities Find Work

By [villagegreennj](#) Nov-25-2017



From Easterseals New Jersey:



Lauren Mackiewicz, manager of Northern Career Pathways, a division of Easterseals New Jersey, reviews a case file in the Maplewood office.

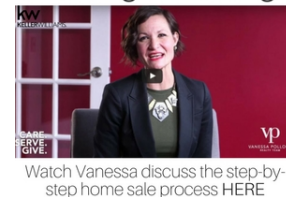
1

View Left

stucco exterior of the Hammond Map Building on Valley Street lies an amazing resource, Easterseals New Jersey, a



Thinking of Selling?



solution center for those seeking employment, but challenged due to personal disabilities. These disabilities include developmental disabilities such as autism, physical disabilities, mental illness and other special needs. Through Easterseals Employment Services, individuals with disabilities can secure satisfying work environments that allow them to maximize their potential, while simultaneously making employers aware of the positive benefits that result from establishing disabilities inclusion initiatives.



Easterseals Employment Services program provides a multitude of support for those with disabilities seeking first-time employment, as well as those looking to return to the workforce after a period of absence. Their services include:

**Like what you're reading? SIGN UP for our daily newsletter.**

- Job Development Assessment



**THE DICKSON GROUP**  
OF COLDWELL BANKER - MAPLEWOOD  
www.TheDicksonGroup.com



- Job Sampling
- Workplace Integration
- Jobsite Analysis
- Job Shadowing
- Post-placement Training & Support

Onsite, employment specialists work with candidates referred by DVR (Division of Vocational Rehabilitation) and match their skills and abilities with job opportunities that lead to superior job satisfaction as reported by employees and employers, alike. Easterseals Employment Services serves sixteen counties in New Jersey and the NCP program serves seven.

According to Daniela Bardesio, Director of Supported Employment for Easterseals, "Our workforce development team spends a significant amount of time with each job candidate. We support them through the discovery phase to determine their interests and abilities. We follow that by accompanying them on job tours and providing

1

View Left environment."



## Events Calendar

**WED 29** **Jersey Cares Coat Drive**  
November 1 @ 9:00 am  
- December 13 @ 5:00 pm  
Maplewood NJ

**WED 29** **Baby Lit @ Hilton Branch**  
November 29 @ 11:00 am

**WED 29** **ACA Open Computer Lab**  
November 29 @ 1:00 pm - 3:00 pm  
Maplewood

**THU 30** **Raptor Hike for Families**  
November 30 @ 4:00 pm - 5:00 pm  
Montclair NJ

**THU 30** **Classical Piano Music Appreciation**  
November 30 @ 7:00 pm - 8:30 pm

[View More...](#)



Once hired, employees are provided with on-the-job training to enhance their job-specific skills, knowledge and competencies, allowing them to perform at their best. Employers see the benefits in employee performance and engagement, with employees expressing greater job satisfaction. Ultimately, it's both parties that benefit from long-term retention.

The Valley Street location also houses Northern Career Pathways (NCP), a division of Easterseals Employment Services that is focused on those who are deaf or hard of hearing. NCP's location offers the Assisted Technology Center that includes a variety of devices available for candidates that can help them to improve their performance. Demonstrations of the technology are available onsite and include: active hearing protection to amplify signals, voices and warning signals while suppressing harmful noise levels, an alerting device for important sounds such as a doorbell, telephone ringing or emergency alarm. Other examples include Augmentative and Alternative Communication Devices (AAC) which enable individuals with speech and language limitations to communicate. Dynamic display speech-output solutions allow users to select the words or phrases they want to say from a series of customized pages on a touch screen. A multitude of other technologies are also available.

Lauren Mackiewicz, manager of Northern Career Pathways says, "We empower participants with training and education, so they can maximize their potential through increased independence and productivity. I'm most rewarded when a client expresses daily satisfaction at work and their disability is no longer a factor in their ability to perform successfully. After all, our clients just want what the rest of us do, to be fully contributing members of society. Easterseals makes that possible!" For more information about Easterseals Supported Employment Services, please call (732) 828-8080 and for NCP, call (973) 275-5470.

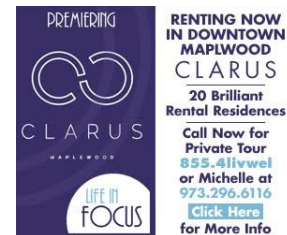
In addition to providing services for potential employees, Easterseals provides solutions to area employers who are looking to fill positions with eager and capable human talent through its Workforce Development Solutions program. More information about this program can be obtained through [www.eastersealsnj.org/workforce](http://www.eastersealsnj.org/workforce).

### About Easterseals

Easterseals New Jersey has helped individuals and families with disabilities or special needs to live, learn, work and play in their communities with equality, dignity and independence since 1948. Annually, over 9,000 people in New Jersey with developmental disabilities including autism, physical disabilities, mental illness and other special needs receive services in our programs designed to help them work toward achieving independence and full community-integration. For information regarding Easterseals New Jersey and its statewide disability services, please visit [www.eastersealsnj.org](http://www.eastersealsnj.org) or [www.facebook.com/eastersealsnj](https://www.facebook.com/eastersealsnj).

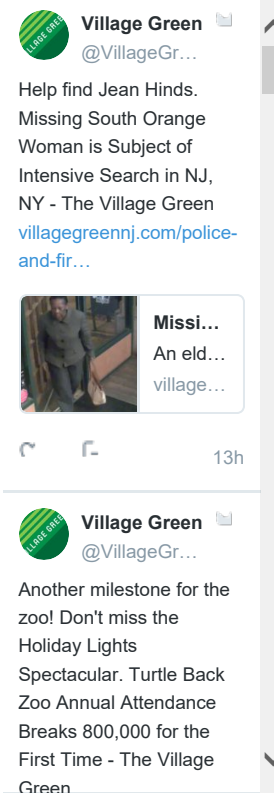
1

View Left



### Tweets by

@VillageGreenNJ1



Embed

View on Twitter



Tagged in: *Adults with Disabilities, Autism, Daniela Bardesio, Division of Vocational Rehabilitation, Easterseals NJ, Easterseals Northern Career Pathways, Easterseals Supported Employment Services, Hammond Map Building, Lauren Mackiewicz, Maplewood NJ*



## You May Also Like



interACT Youth presents 'Disney's The Jungle Book Kids!' December 1-3 & 8-10



Kid Friendly Holiday Celebration Returns to the Woodland Dec 9



Turtle Back Zoo Annual Attendance Breaks 800,000 for the First Time



Annual Essex County Historic Holiday House Tour December 2 & 3

Looking for that **Special Something** for that **Special Someone?** Give Someone Special the gift of **Great Sleep.**

This holiday, **DR. J'S SLEEP SOLUTION™** would like to give you a gift...

**Dr. J's Sleep Solution Pillow**

- Perfectly aligns your head and neck in both Back AND Side Lying
- Makes falling asleep easier
- Reduces the risk of sleep interruptions throughout the night
- Eliminates the risk of waking up with neck pain

Treat yourself or someone special to a New Year full of Great Sleep! Visit [Sleepsolutionpillow.com](http://Sleepsolutionpillow.com). Enter code:

**Goodsleep25** for **25% off** 1 pillow (reg. \$49.99), or

**Goodsleep35** for **35% off** 2 or more pillows.

Offer expires 12/31/17. Offer cannot be combined with any other codes, discounts or offers. Pillow may be purchased by person at \$10. In-store in conjunction with selling \$75 with \$100 or in conjunction with...

Leave a Reply \_\_\_\_\_

Your email address will not be published. Required fields are marked \*



Comments \*

**Submit Comment**

*Follow*



*Subscribe to our free daily newsletter.*

*Your email*



**1**

View Left