

**“Support is the key to opening
new opportunities for people
with disabilities.”**

- Brian Fitzgerald, CEO



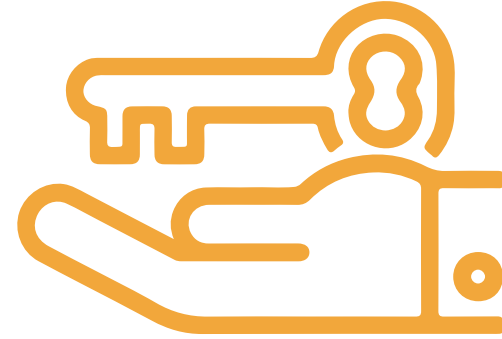
Easterseals New Jersey

Annual Impact Report

'22 - '23



**all abilities.
limitless possibilities.**



Message from President & CEO

I'm heartened by the progress we've made together in empowering individuals with disabilities.

Our approach has been about serving the whole person, addressing key social determinants of health including stable housing, meaningful employment, and robust community support. This holistic focus on health and well-being reflects our commitment to the long-term success and stability of those we serve.

Thanks to your partnership, we've adapted to changes by strengthening our financial foundation, enriching our service portfolio, and enhancing our operational efficiency. Our new headquarters and expanded residential services are milestones of our growth.

Your contributions to our advocacy efforts have helped us champion a more inclusive and accessible world. Together, we've made strides in policy influence and community engagement.

Looking ahead, with your continued support and engagement, we are excited to face new challenges, break down barriers, and further enrich the lives of those we serve.

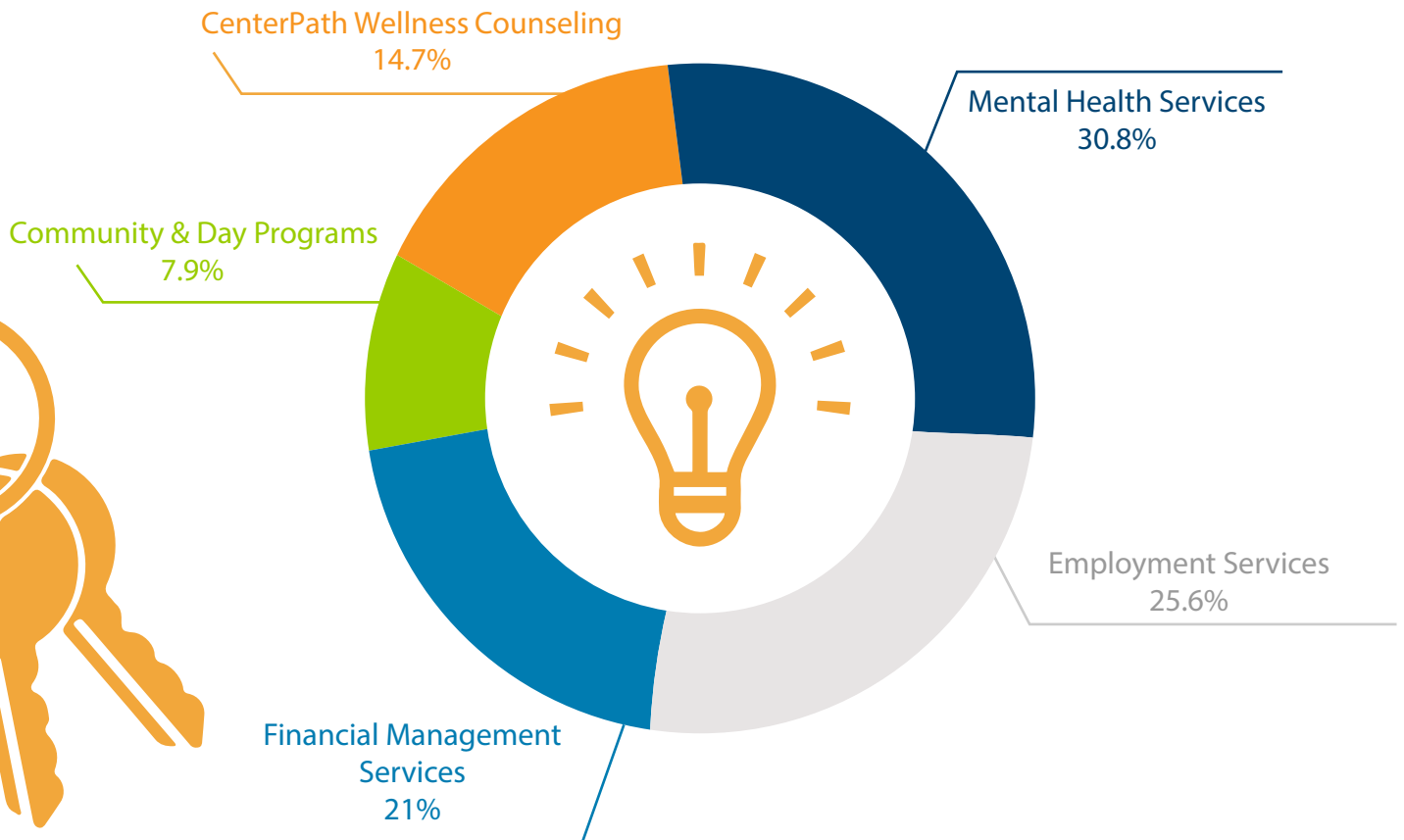
Thank you for being an essential part of our extraordinary journey.

Warmly,

A handwritten signature in blue ink, appearing to read "Brian Fitzgerald". The signature is fluid and cursive, with a long horizontal stroke extending to the right.

Brian Fitzgerald

2,702 individuals served



94% overall satisfaction rate across all programs and services.

92% of individuals in our mental health residential services avoided hospitalization due to a mental health crisis.

95% of participants in our employment support programs who were hired in the workforce retained employment for over 90 days.



You call. We listen. We help.

Through our Information & Referral program, even if you're not eligible for our services, we do not leave you without support. Easterseals New Jersey strives to deliver helpful resources and additional information for those seeking assistance.

With the support of our staff members, we were able to provide help and hope to 825 individuals throughout the year, connecting them to outside resources 93% of the time.



“When I was first met with my personal challenges I had no idea where to even start looking for help. I am so thankful to come across Easterseals New Jersey. Thank you so much for the guidance during this time.”



“I was talking to my friend and she recommended I reach out to Easterseals New Jersey. I am so happy I called because I was able to get the help I needed.”



“You have no idea how much your help has meant to me during this time of my life. A huge thank you to Easterseals New Jersey for listening to me and working hard to find the right resources.”

Looking for resources?
Give us a call at 855-215-4541
Email us at info@nj.easterseals.com

We celebrate our **key** supporters!

Our cherished donors are changing lives every day.



A big **thank you** to the top “Be Kind to Your Mind” event sponsors for helping unlock opportunities for those in need!

Top Volunteer:



Thank you also to our esteemed President’s Council Members!

These visionary donors of \$1000 or more are the key to opening doors for people with disabilities. We are honored to have them as part of the Easterseals NJ family.



Curious about joining the President's Council and being part of our impactful journey? Reach out to us at giving@nj.easterseals.com for more info!



**Continue helping
our vital programs
provide the best
support possible.**

Scan me!



eastersealsnj.org/waystogive

You are the key

in creating opportunities
for individuals with
disabilities and those
who care for them
throughout New Jersey



Thank You!

241 Forsgate Dr., Suite 200
Jamesburg, NJ 08831