

WHAT IS SUCCESS?



 easterseals
New Jersey

2016
PROGRESS REPORT

A measure of our
participants' success in
365 days.

Success is Easterseals.



Easterseals provides services throughout New Jersey

The New Jersey affiliate provides services and supports in the 21 counties of New Jersey to mostly adults, 18 years of age or older with various disabilities and special needs.

The *continued success* of our program participants could not have been accomplished without **YOUR** help!

YOUR generosity has helped people with disabilities and special needs in New Jersey to **LIVE, LEARN, WORK & PLAY:**

Community Living Services



Residential Services - Participants maintained stable housing upon discharge

98%

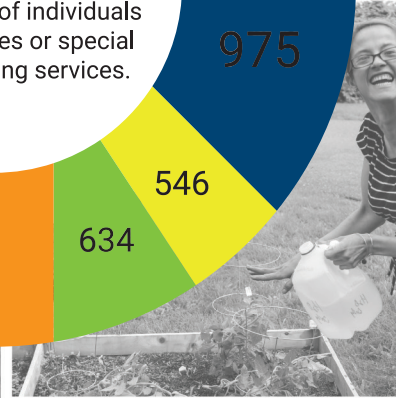
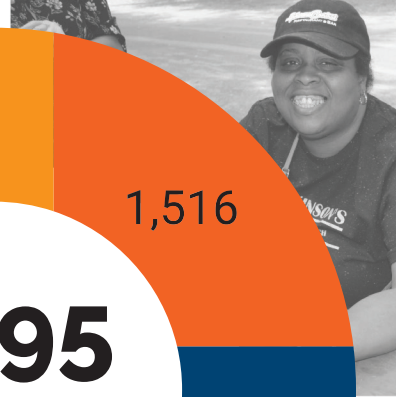
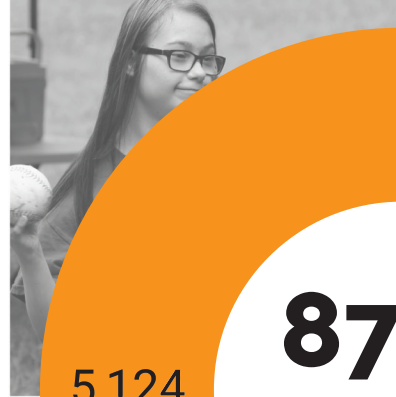
Residential Services - Participants avoided psychiatric re-hospitalizations

95%

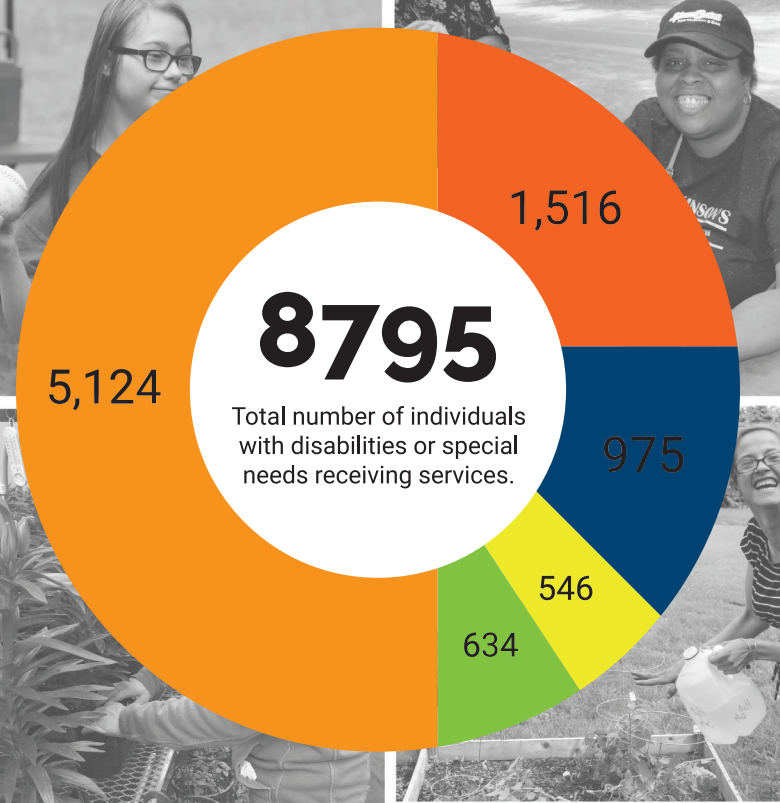
Homeless Services - Participants linked to community supports

92%

Note: These figures are from fiscal year Sept 2015 - Aug 2016



- Fiscal Intermediary Services
- Community Living Services
- Employment Services
- Community Support Services
- Camping & Recreation Services



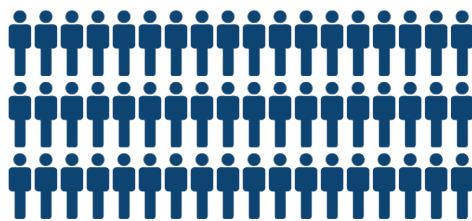
Community Support Services & Health and Wellness



93% of Community Support Services' participants achieved their personal goals



285 new participants took part in the Be Well & Thrive Nutrition and Exercise Program



540 Employment Services' participants received vocational training. Of those, **33** participants were placed in community employment!

58 Senior Community Service Employment Program (SCSEP) participants over the age of 55 were also placed in community employment!



483 Campers attended Camp Merry Heart
Campers traveled to new locations



Camping and Recreation

Total Expenses: \$140,750,430



4%
96%

Fundraising expenses - 0%
Management expenses - 4%
Directly to service - 96%

Direct Services: \$134,950,635

Management & General: \$5,128,622

Fundraising: \$617,258

National Fees: \$53,915

Total Revenue: \$140,024,460

Government Grants & Fees: \$132,287,560

Program Service Fees: \$4,706,903

Sales to Public: \$1,767,896

Public Support: \$607,109

Investment Income: \$476,589

Other: \$178,403

A message from our CEO and President Brian Fitzgerald:

In 2017, Easterseals will be operating within a new funding system from the State of New Jersey. Despite this, our staff is prepared to deliver the same high-quality service and administrative support we pride ourselves on.

Our ability to provide opportunities for people with disabilities to live, learn, work, and play in their communities relies in large part on the continued generosity and support of our donors. This year, the support of our donors will be even more important to the achievements of people with disabilities. We look forward to **taking on disability together** with our staff, donors, volunteers, program participants, and their families to create even greater opportunities for people with disabilities and special needs in New Jersey.

Easterseals New Jersey
25 Kennedy Boulevard, Suite 600
East Brunswick, NJ 08816
732.257.6662



eastersealsnj.org