



80 YEARS OF MAKING A DIFFERENCE

2024 Annual Report

 **easterseals**
Massachusetts



80 YEARS OF SERVICE, CARE & COMMITMENT: *that's worth celebrating*

We celebrated our 80th Anniversary on June 22, 2024! That is eighty years of providing services to people with disabilities throughout the state. Eighty years of innovating to meet the critical needs of our community. And without a doubt, eighty years of amazing people, like you, doing everything you can to ensure our clients receive the best services possible. I am proud to be part of our long history, and I hope you are, too.

We produce this report each year to acknowledge your support and share the stories of some of the individuals who reached their goals working with Easterseals Massachusetts. These goals are unique to each person we serve. Every single team member takes time and care to uncover barriers and help our clients develop a plan for success. It is a big job, and we are together in this important work. For every Easterseals team member working face-to-face with a client,

hundreds of professionals, community volunteers, Board members, and donors are behind the scenes to provide extra support. Thank you for being one of those generous individuals!

In this year's report, we are proud to highlight a special group of people within our larger community – The Giving Leaf. This group of longtime donors and volunteers provides sustainable roots for philanthropic

giving at Easterseals Massachusetts. Because of our dedicated supporters, more students are navigating college, more adults are contributing to the workforce, more people are using assistive technology for greater independence, more individuals are benefiting from working with therapy animals, more youth are learning about disability history in classrooms throughout Massachusetts, and so much more.

As we reflect on 2024, it is easy

to celebrate and applaud the new endeavors at Easterseals Massachusetts. While I am always excited for new opportunities and prospects to advance our mission, I am deeply impressed by our commitment to consistency. As time, technology, and our environment progress, Easterseals remains flexible and nimble to change while staying true to our mission. I know with certainty that is your conviction also, and for that I am grateful.

Thank you for working with us to ensure that children and adults with disabilities have equal opportunities to live, learn, work, and play.

Best Regards,



Paul Medeiros
President & CEO





meet Lisa

Assistive Technology Independent Living

From an early age, Lisa faced challenges that many have never had to think about. Born with a rare congenital condition called Bilateral Complete Terminal Ulnar Hemimelia, she grew up without elbows, unable to bend her arms, and with only three fingers on each hand. Everyday tasks like feeding herself, using a phone, and managing hygiene were difficult and painful. Growing up, Lisa relied mostly on her mother to navigate daily life and then her husband Scott's support once married.

Sadly in 2021, Lisa's mother unexpectedly passed away, this left her grieving and assuming temporary responsibility for setting up homecare services for her elderly father and her brother, an Easterseals Massachusetts client. At this same time, her physical challenges intensified. Chronic pain, due to the lack of major joints and the resulting dysfunction of her body, made even basic self-care tasks increasingly difficult. Despite these barriers, Lisa was determined to regain her independence.

In August 2023, Lisa took a significant step toward reclaiming her independence by joining the MassAbility Assistive Technology (AT) Independent Living Program at Easterseals. Initially hesitant about asking for help, she began working closely with ESMA Engineers and AT Specialist Jennifer. Together, they trialed and developed customized tools to suit her unique needs. One of the first breakthroughs came when Lisa was given an Obi robotic feeding device, which helped her feed herself without bending her head toward the plate.

Since then, Lisa has received various AT devices that help ease her daily life and assist with household chores, including an Apple iPhone where the simple touch of an app controls the robot vacuum. Adaptive cooking tools, such as a motorized pot stirrer and an adaptive cutting board, allow her to be more involved in preparing meals. Other tools include a medicine dispenser, a hands-free blow dryer, a hands-free toothbrush, and a bidet for personal hygiene tasks. Smaller items, like electric scissors, a phone stand, and zipper pulls, have simplified previously impossible tasks.

Lisa describes her experience with ESMA as "life-changing," noting that every new device has brought her closer to overcoming obstacles. "I can't say enough about how amazing Jennifer is. Her patience and commitment to find solutions has made me feel the most independent I have ever felt," said Lisa.

Lisa and ESMA AT Specialists continue to explore other solutions for smart home systems, new tools to help her pay bills, and automated pet-care devices to enhance her independence further. Her ongoing visits to the Assistive Technology Regional Center run by ESMA provide her with continuous support to create a more ergonomic environment.

Through collaboration and determination, Lisa's story is a powerful example of the impact of AT. With each breakthrough, Lisa is improving her quality of life and reshaping her ability to live, learn, and care for herself with newfound independence.



meet Bill

Assistive Technology Vocational Rehabilitation

Bill Taube's determination to pursue his goals led him to Easterseals Massachusetts' Assistive Technology program. Having to continually adapt his routine after his diagnosis of macular degeneration in 2015, he increasingly found it difficult to maintain the level of independence he wanted. His vision loss became a barrier to driving, reading, and using household appliances.

Fortunately, Bill was referred to ESMA by his Career Services counselor at MassAbility. He sought assistance to help him adapt to his changing vision and regain control over his daily activities. ESMA AT Specialist Jessie completed his initial evaluation, and she and her colleague Victoria worked with Bill to identify and implement the right solutions for his needs. Bill's primary goal was to use his computer effectively, allowing him to work again. To achieve this, he was introduced to built-in Windows accessibility features, a high-contrast keyboard with extra-large text, and ZoomText software, which magnifies the screen, enhances contrast settings, and provides a screen reader function. A 27-inch 4K monitor was also provided, offering a sharper image to help him navigate digital content more comfortably.

To help read physical documents, Bill received an iPad Pro with a 13-inch screen and a ScanJig stand to scan and magnify documents using the Seeing AI and Magnifier apps. In addition to reading text, these tools

assist in identifying objects. He also learned to use many additional accessibility features on the iPad to navigate his surroundings.

By all accounts, meetings between Bill and ESMA are always fun and filled with laughter. "Jesse was great, and Victoria has been phenomenal," said Bill. "I look forward to every meeting because I learn something new and can be myself and joke around."

Bill has become a strong advocate for people with disabilities, especially seniors, and Easterseals. "Everyone needs to know about assistive technologies," said Bill. When he meets people with disabilities, Bill shares his experiences to educate others about AT and encourages them to explore ESMA programs so they can achieve the same success he has. "Because of assistive technology, doors to employment have opened and I am a senior going back to work."

With the help of assistive technology and Easterseals Massachusetts, Bill has gained greater independence and confidence. He travels into the city, serves on the City of Boston's Senior Advisory Council, and helps test systems for accessibility. Bill concluded, "I am extremely grateful to everyone at Easterseals. They are supportive and listen. The technologies they taught me have expanded my network and have made my life better."



meet Holly

College Navigator Program

Like most college students, Holly juggles a busy schedule. Besides attending Greenfield Community College (GCC), she lives independently, maintains a job, and is an artist. While she is thriving and on her way to graduation in the spring, there was a time when she wasn't sure how she would get to this point.

When she first started attending GCC, Holly knew she needed assistance to succeed and was unsure how to find it. Having been diagnosed with autism, a learning disability that affects her reading, and anxiety, she received special education accommodations and services that ended when she graduated from high school. Although those services do not continue in postsecondary education, she started with the GCC Disabilities Services Office.

The GCC Disabilities Services Office was amazing. In addition to providing support like coordinating accommodations across campus and encouraging Holly to participate in college activities, they also connected her to the Easterseals Massachusetts College Navigator Program.

College Navigators Zoe and Tucker began working weekly with Holly to set initial goals around time management, scheduling, and managing her planner. She also established key study habits to help her succeed in her classes. Most importantly, she developed a system for managing her schoolwork and learned how to advocate for herself in accessing campus resources.

Holly's true passion is art. Although shy and quiet, she

happily shows her amazing artwork from her sketchbook when she gets to know people. Art gives her the space to be creative and most importantly be herself without any judgment. Zoe and Tucker realized this was a great tool for expressing herself freely.

Beyond academics, the College Navigator Program helped Holly grow her confidence and independence. Now she has the confidence to do what is needed to help manage her anxiety, like bringing her art supplies and stuffed animals to school. One of her proudest accomplishments was having her artwork displayed in the college art gallery, something she had been working toward for years. She is also active in the GCC Neurodiversity Club.

Holly is also passionate about advocating for individuals to be tested for intellectual disabilities and autism at an early age. She wishes that anyone with a disability receives support and resources in the school setting. Recently, she was a spokesperson for ESMA to inform Massachusetts Legislators about the importance of College Navigator Program grant funding so that other individuals with disabilities can follow in her footsteps.

Now preparing to graduate from GCC, Holly is excited for her next step transferring to UMass Amherst to continue her education. Although transitioning to a new school can be scary, she feels far more prepared than when she first started college. Reflecting on her journey, she acknowledges how much she has grown academically and personally. Holly wants people to know, "Even though you have a disability, you can do anything you set your mind to."



meet Brian

Job Development & Placement Services

When Brian, a young man with autism, graduated from high school in 2022, he was enthusiastic about getting a part-time job. He was unsure where to start because he did not have a driver's license and relied upon walking for transportation, which made his employment search challenging. Fortunately, in June 2023, he was referred to Easterseals Massachusetts' Job Development & Placement Services by MassAbility, formerly known as the Massachusetts Rehabilitation Commission.

Brian met with ESMA Employment Specialist, Connie, who recognized that his outgoing personality indicated good interpersonal and communication skills, which meant he would work well with people. She then helped him prepare a resume highlighting his strengths and skillset. As part of career counseling, job search strategies, and interview preparations, they worked together to determine the best types of jobs for Brian and put together a list of local stores and businesses he would like to work at.

Brian participated in several interviews but did not receive any offers. While initially discouraged, Brian said, "Connie's continuous encouragement helped me feel better and gave me confidence to never give up."

In January 2024, Brian completed an online application at the Big Y in Southbridge. Connie then visited the store

to meet the Human Resources Manager and alert him to Brian's application. The store immediately called Brian and set up an interview. Brian prepared diligently with mock interviews and advice tailored to the position.

Brian got the job and started working at the store one month later! His upbeat attitude and commitment stood out, leaving a lasting impression on the hiring team. He quickly became a valued team member, learning about the various roles throughout the store.

Over a year later, he is thriving in his job bagging groceries for customers. His work ethic has not gone unnoticed. Ronald, the store's front end manager, recently said, "Brian is a very conscientious worker and is excellent with the customers." Brian explains that he enjoys the welcoming atmosphere and the connections he has built with his coworkers and customers.

Reflecting on his experience, Brian expresses gratitude for the job support services and the difference that Connie made for him. His mother shares appreciation, stating how much this opportunity has positively impacted their family.

Brian's success is due to his hard work and the dedicated support and guidance provided by ESMA. With his positive demeanor, Brian continues to enjoy his job while committed to working diligently and building a future at Big Y.



meet Brittany

Equine Assisted Services & Recreation

For many years, 31-year-old Brittany expressed interest in horseback riding lessons. While searching for equestrian programs, Brittany and her mother Paula quickly discovered limited options for adults with disabilities. Brittany, who is on the autism spectrum and has diagnoses of anxiety, depression, and type 2 diabetes, was told time and again that she was either too old to ride or could only pet the horses. The duo was determined to find a welcoming place and was cautiously optimistic when Brittany's therapist recommended the Equine Assisted Services at The Bridge Center.

After a tour of the Equestrian Center in 2023, Brittany felt at ease and was excited that she found a place to learn new things, make friends, and how to ride and care for horses. Paula believed Easterseals Massachusetts equestrian and recreational programs could help decrease Brittany's anxiety and depression.

Brittany was first paired with Max, a gentle Haflinger Gelding, and adaptive riding instructor Tabitha. Initially anxious about meeting new people and trying new activities, Brittany found support from ESMA staff, whom she describes as "super nice, kind, caring, and supportive." With guidance and a mix of verbal and visual cues, she learned to halter, lead, and groom Max before progressing to tacking, mounting, and riding with proper posture. Her confidence grew with each lesson.

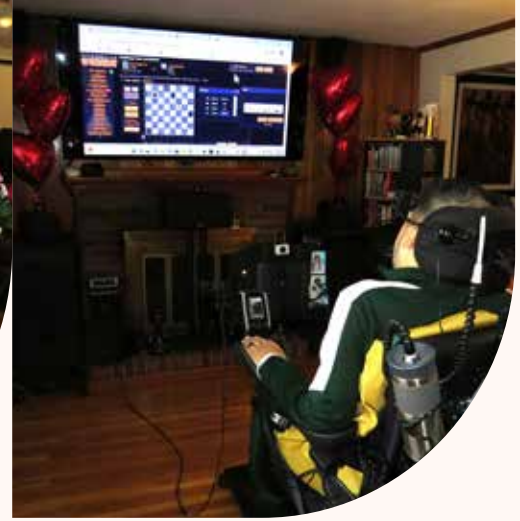
Over time, Brittany advanced to working with Finn, a 1,600-pound Canadian Warmblood Gelding. She confidently retrieves him from his paddock and leads him

to the grooming stalls for "spa time." She describes Finn as a "furry four-legged friend" with a "silly personality" who calms her and brings her joy. Brittany now aspires to become even more independent around horses and hopes to enhance her horsemanship skills further.

Even though The Bridge Center is an hour away from their home, Brittany has become a familiar face, participating and thriving in many other programs. She attends animal caretaker classes, social skills programs, and culinary sessions. She particularly enjoys cooking classes, where she learned to prepare meals in a group setting, and hopes to cook larger meals for her family. "Some areas that the programs helped me are socializing, learning new things, learning to cook safely, and how to care for a horse, two sheep, and a rabbit," said Brittany.

Today, Brittany and Paula are spokespeople for ESMA and recently shared their story with a group of Massachusetts Legislators who came to The Bridge Center to learn more about the equine assisted services and recreational programs offered. They are also volunteers, helping with events and collecting raffle items to support campus programs. Brittany explained that she likes to give back as much as she receives.

With each lesson, class, and interaction, Brittany's confidence grows. Her experiences at The Bridge Center give her valuable skills and encourage her to set new goals. Brittany's story shows how inclusive programs and a strong community make a real difference. As Brittany puts it, "When I pull into Easterseals Massachusetts, it always makes me super happy to see everyone and, of course, the animals."



meet Marvin

Assistive Technology Independent Living

Marvin is passionate about everything related to computers and technology. His creative mind has the uncanny ability to diagnose a computer glitch and within minutes he can find a solution. In 2001, Marvin survived a C2 spinal cord injury leaving him paralyzed and facing a new world of life-sustaining technology. After quickly adapting to the ventilator machine necessary to help him breathe, he focused his curiosity on other Assistive Technology that could support his independence and activities of daily living.

This was when he was introduced to Easterseals Massachusetts Assistive Technology (AT) by the MassAbility Assistive Technology Independent Living Program. Leah, an AT Specialist, visited Marvin's home to assess his needs and explore potential solutions. From their first meeting, Leah made Marvin feel valued and respected, ensuring his input shaped the process. Her professionalism and compassion left a lasting impression on him. Marvin said, "Leah helped me explore the options available and guided me through the entire process, ultimately ensuring that I received the assistive technology that enhanced my daily life."

After their collaboration, Marvin received two transformative AT devices: an Origin Instruments HeadMouse and a new computer. The head mouse, combined with a small grey dot between Marvin's

eyes, enables him to control the computer with head movements. This innovative solution effectively transformed the only part of Marvin's body he could move into a powerful tool for independence. Marvin said, "This is such an amazing piece of technology that I didn't know existed."

Marvin eagerly begins his day each morning by using his computer to manage tasks such as making phone calls, researching online, and shopping for essentials. These tools also allow him to assist others with their technological needs, attend online classes, and stay informed about technological trends. One of Marvin's favorite activities is playing chess. He even participates in international tournaments, connecting with players around the world. This technology also allows Marvin to stay close to his family, including video chatting with his grandchildren who live out of state.

Marvin is incredibly grateful for ESMA. He describes Assistive Technology as life-changing, providing opportunities to stay connected with the world and integrate into his community in ways he never thought possible. He says, "Easterseals Massachusetts has given me a level of independence that has enriched my life beyond words. Using this technology has helped me look beyond my disability and focus on my ability."

Assistive Technology (AT)

Assistive Technology (AT) provides statewide services for people with disabilities to expand their independence by **using devices to achieve greater access to education, employment, and communities.**



3,311

total clients served during more than 12,000 appointments.

980

MassAbility clients served.

800

devices loaned between Boston and Worcester Assistive Technology Regional Centers.

633

Department of Developmental Services clients served.

610

MassAbility clients assisted with laptops and support sessions by our Technical Support Center.

135

free Computer Fundamentals Educational Webinars.

Advocacy & Community

ESMA provides **22,000 essential services to more than 10,000 individuals each year.**

We keep the public informed through our website and social media channels. We actively encourage state legislators to create and maintain programs that help people with disabilities gain greater independence.



368,000

eastersealsma.org page views, up 27%, with 82,877 users, up 57%. The homepage, The Bridge Center, and Careers were the top three pages visited.

13,300

social media fans, growing 6.4% across 6 channels as of December 2024.

397

people employed by ESMA during 2024, including temporary summer workers.

240

meetings, hearings, roundtables, and testimonials attended by our Advocacy Team.

80

years providing services that unlock everyone's full potential.

50

community resource fairs were attended by ESMA staff, raising awareness about our programs to thousands across Massachusetts.



State Senator Peter Durant visited the Worcester ATRC to discuss ESMA legislative priorities, including funding for the College Navigator Program and Assistive Technology initiatives.



Congratulations to Joe Bellil on his reappointment to the MASILC by Governor Maura Healey, recognizing his dedication to independent living services.



Regional Board members were honored for embodying ESMA core values of integrity, commitment, collaboration, and respect.

Pappas Rehabilitation Hospital for Children & Student Service Aides

ESMA collaborates with Pappas Rehabilitation Hospital for Children and various school districts to **provide staffing solutions for recreational, programming, and paraprofessional support needs.**



35

patients were provided care.

19

school districts partnered with ESMA to provide students with 1:1 supports in school.

Youth & Recreation

Statewide Youth Leadership, Mentoring, Recreation Programs, and the #TeachDisabilityHistory campaign offer youth and young adults **opportunities for self-advocacy, self-awareness, personal health, safety, and growth.**



397

participants across all statewide Youth & Recreation Programs.

264

teens and young adults ages 14-26 participated in the Youth Leadership Network.

72

people engaged in Summer and new Year-round Swim Programs.

39

individuals are members of B.A.D. and Thrive Mentorship Programs.

33

individuals attended weekly Accessible Martial Arts classes.

15

kids enjoyed Camp Sno-Mo overnight camp in New Hampshire.

10

#TeachDisabilityHistory presentations to schools and community organizations.



Our ETS team attended the 33rd Annual Autism Connections Conference to meet with attendees and share how ESMA can help.



Maple Ledge Farm's 20th Annual Pancake Party fundraiser was a success, with pancakes served to support ESMA.



Long-time Mission Partners, Comcast's Team UP volunteers learned how to switch adapt toys with our AT team, making play more inclusive for children.

College Navigator

The College Navigator Program **provides individualized services to college students with disabilities** to help reach their educational and employment goals.



1,256

students served since the program began in 2018.

612

students in Massachusetts received services in 2024, totaling more than 16,500 hours of 1-to-1 support.

400+

students benefited from grant funding at five state community colleges.

22

students graduated in 2024!

Employment & Transition Services

Employment & Transition Services provide skills training and ongoing support to adults with disabilities to **secure competitive jobs and assist students to reach personal growth goals and develop skills to navigate educational, community, and career settings.**

255

students ages 14-21 participated in Pre-Employment Transition Services (Pre-ETS) to gain valuable employment and transition skills toward adulthood.

244

MassAbility clients supported by Job Development & Placement services.

35

MassAbility clients achieved their goals by obtaining jobs.

Massachusetts Alternative Finance Program

The Massachusetts Alternative Finance Program improves the independence and quality of life of residents with disabilities through **loan opportunities for acquiring Assistive Technology devices and services.**



\$19+

million total loaned since the program started in 2005.

\$185,000

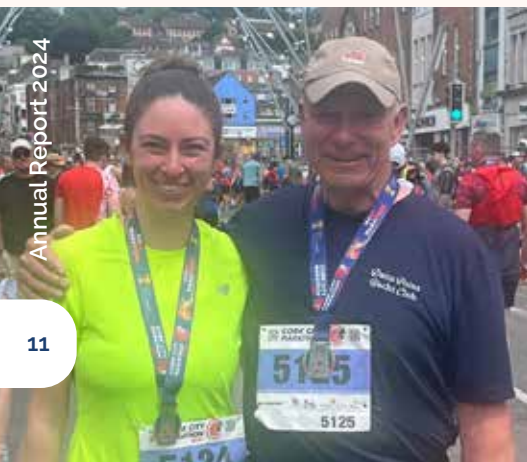
no-interest Mini Loans to purchase AT items less than \$4,000, such as hearing aids.

1,300

Long-Term Device Loans since 2009.

949

low-interest Financial Loans to 644 people to purchase AT devices over \$4,000, primarily modified vehicles.



Former board member, Kara Cronin, and her father, Ray, raised almost \$14,000 for ESMA by running the Cork City Half Marathon in Ireland.



ESMA Thrive and B.A.D. programs hosted an overnight retreat at Bridgewater State University in June.



The 2024 Bridge to Opportunities Golf Classic was a hole-in-one, raising over \$65,000 for disability programs.

Rehabilitation Services & Applied Behavior Analysis

ESMA partners with various community programs and provides services to **help clients achieve greater independence.**

158

community partners, including schools, day habilitation programs, skilled nursing facilities, and early intervention agencies received Therapy and ABA services in 2024.

79

therapists provided more than 50,000 hours of PT, SLP, OT, and BCBA services throughout Massachusetts.

The Bridge Center



The Bridge Center provides a wide range of programs year-round, including **Recreation, Equine Assisted Services, Therapeutic Services, and Camp**, for all ages and all abilities.



1,604

people attended programs, services, and events in 2024.

556

hrs of PT, OT, and SLP services were provided throughout the campus.

143

individuals supported by classes and sessions at the Equestrian Center.

109

volunteers provided 2,707 hours of service, which helped facilitate all programs, events, and grounds clean-up.

90

employees across 5 companies volunteered during TeamWork Days to complete dozens of grounds and facilities projects.

60

campers enjoyed the April Vacation and Summer Camp programs.

20

ongoing Recreation programs were provided to 79 participants.



The #TeachDisabilityHistory Committee joined Boston ADA Day, meeting Mayor Michelle Wu to promote disability history in schools.



We thank Berkshire Bank for their \$15,000 Mission Partnership investment to help empower our clients to lead more independent lives.



Our Assistive Technology team's third annual Switch-Adapted Toy Giveaway provided 116 toys to Massachusetts children.



CREATING OUR FUTURE AT THE BRIDGE CENTER: *founded on community & care*

This year, The Bridge Center expanded programs for people of all ages and abilities in southeastern Massachusetts and strengthened our community role and partnerships.

In January, we received our Recreational Camp License, allowing us to host Camp for the first time in a decade. Our team organized our first official camp during April School Vacation and Summer Camp starting in July.

Our popular Recreation programs are growing, including cooking classes, creative arts, life skills, and game nights. Our new Parent & Caregiver Group offers a speaker series dedicated to disability issues, where participants learn helpful information and share experiences.

Equestrian Center horseback riding lessons are now offered seven days a week. The sprawling stable also hosts hippotherapy, vocational training, animal care classes, school vacation week, and summer experiences. By the end of the year, 8 horses,

2 sheep, 3 barn cats, 1 French lop rabbit called The Bridge Center "home."

Customized Therapeutic Services, including PT, OT, SLP, and hippotherapy, assist individuals toward achieving their personal goals. We were excited to start several Wellness & Skills-Building Groups in the fall to empower individuals of all ages to enhance communication, physical development, and teamwork skills in a supportive environment.

ESMA has a long-standing presence serving the greater Bridgewater community and working collaboratively with a wide spectrum of municipalities and local organizations to host community gatherings at The Bridge Center. Events include a Resource Fair, Fishing Derby, Move With Me fundraiser, Bridge to Opportunities Golf Classic, Trunk or Treat Halloween celebration, a Holiday Toy Drive, and more. These events helped create awareness of our programs and volunteer recruitment, creating a pipeline for future growth.



WHERE FUN MEETS MAKING A DIFFERENCE: *a legacy of playing with purpose*

For over 40 years, incredible groups of people, in different communities from across Massachusetts, have come together to do what they love while supporting Easterseals. Whether taking to the field for a game of softball, spiking a volleyball, or tossing a cornhole bag, these games are about more than just fun—they are about giving back.

TOP: Paul & Dixon Team. BOTTOM LEFT: Lahey Hospital & Medical Center Team. BOTTOM RIGHT: Bosworth 1981 Team.

We applaud these teams for their many years of support and for putting the FUN into FUNdraising!



Digital Federal Credit Union
Fitchburg Fire Department
Goretti's Market
Harvard Press

Jeanne D' Arc Credit Union
Lahey Hospital & Medical Center
Middlesex Saving Bank
MIT Press

Monday Night Moms
Paul & Dixon Insurance
Quality Beverage
R. H. White Construction

Robert Reiser & Co.
Steve Bosworth Team
White Water
Zampell Refractories, Inc.

OUR JOURNEY TO MOVE WITH ME: *inspiring creativity and inclusivity*

In 1993, the first Easterseals Massachusetts 24-hour Relay Walk With Me event was held at Brandeis University. In 1999, it evolved into the 5K Walk With Me fundraiser and happened at several locations throughout the state. In 2020, it blossomed into Move With Me, embracing inclusivity in many exciting ways.

Move With Me is a month-long opportunity for our supporters to get creative with how they "move" to raise awareness and funds for the important programs at ESMA. At the end of the month, we celebrate together in person for The Final Lap. Over the last four years, we have seen an inspiring wave of creativity. Supporters have crafted beautiful artwork, baked delicious goods, and created other incredible items for fundraising.

TOP LEFT: The Hoffman family at the 2011 Walk With Me in Boston. TOP RIGHT: 2024 families walking The Final Lap at The Bridge Center. BOTTOM: Volunteers have always been vital to Move With Me events.

They have hosted pickleball and cornhole tournaments, run marathons, and even written books—all in the spirit of giving back.

We are grateful to the thousands of people, board members, employees, Mission Partners, and community members, who have come together to fundraise for ESMA programs that empower people with disabilities to achieve their goals since our initial event in 1993.

Our 2024 Move With Me event was held at The Bridge Center, where supporters embraced the "Back to the 80s" theme, in honor of our 80th anniversary. Thanks to our Top Five Fundraising Teams:

Matthew Joslin Fund, Sheila Joslin: \$11,905
Heather's Hoofers, Walter Zagroski: \$10,700
Picklepalooza, Nicole Wiemeyer: \$3,250
ESMA Regional Boards: \$1,755
Jared's Heroes, Jen Medeiros: \$1,653



President's Council

Thank You! Your passion, belief, and support of our mission made possible the growth and progress featured in this year's report. Our vision of a kind and inclusive world where people with disabilities have equal opportunities to live, learn, work, and play is imaginable thanks to your partnership.

\$50,000 & ABOVE

Robert & Dawn Seiple

\$25,000 - \$49,999

Anonymous Parent
Ladd & Tammy Lavallee
Paul Lavallee
Walter Skrobot, Jr.

\$10,000 - \$24,999

Roy & Diane Brazelton
The Zagrobski Family

\$5,000 - \$9,999

Joe Bellil & Linda Long-Bellil

Patricia Davidson
Rebecca Fracassa
Kirk & Sheila Joslin
Paul & Jennifer Medeiros
Peter & Michelle Roque
Harry & Debra Salerno
Jay White

\$2,500 - \$4,999

James Butler
Stephen Connulty
Kelli Costa
Brian Franz
John & Linda Freeman
Kenneth & Caroline Larson
Nicole Lavallee
Keith Perry
Owen Richardson
David Rubin
Dov Yoffe

\$1,000 - \$2,499

Edwin Basse
Marilyn Belletti
James Beyloun
Collin Bray
John & Jean Childs
Alison Coady

David Cook
Ron Cort
Raymond & Paula Doherty
Susan Gagnon-Flanagan
Sean Flanagan
Diane Foley
Kevin & Cyndi Forcier
Ivor & Barbara Freeman
James & Teresa Friesema
Denise Garlick
Scott & Rebecca Gregory
Gloria Guerrero
Michelle Higginson
George Hillas
David & Kathleen Hoffman
Russell & Lisa Hoyt
Richard & Tracy Joslin
Chris & Kathy Kittle
Branch & Elizabeth Lane
Cheryl Lazzaro
Leslie Leslie
John Lucas
Paula McDonald
Elizabeth Merrill
Justin & Adele Morreale
Deborah Nurre
Thomas O'Reilly
John Parsons

Dave & Lorelei Randa
Charles Rodman
Daniel & Anne Sacco
Richard Salerno
Anne Schofield
Michael & Gayle Schumacher
PJ & Kimberly Sokol
Francis Smith
Christine Thomas
Allison Thompkins
David Tobias
Erik Tobias
Karen Wellerson
Nafisa Zafar
Walter Zydlewski

We are grateful for every contribution generously given in support of our mission and have made every effort to ensure the accuracy of our recognition listings. Please notify us of any inaccuracies and omissions by emailing philanthropy@eastersealsma.org.



Please scan to view our full donor recognition listings.

Champions of Equal Opportunities

We are honored and privileged that the corporations, foundations, and organizations listed below supported Easterseals Massachusetts in 2024. Working together we delivered on our mission and supported critical programs that helped children, youth, adults, and seniors with disabilities reach their goals.

\$100,000 & ABOVE

Commonwealth of Mass.
Executive Office of Health & Human Services

\$50,000 - \$99,999

Comcast NBCUniversal
Laddawn | Berry Global
The Hoyt Foundation
MassMutual Foundation

\$25,000 - \$49,999

Flora N. Beggs Trust

PricewaterhouseCoopers
The State Street Foundation

\$10,000 - \$24,999

Adelaide Breed Bayrd Foundation
Berkshire Bank Foundation
Constance O. Putnam Foundation
Copeland Family Foundation
Felicia Rose Grant Programs
George F. & Sybil H. Fuller Foundation
The George R. Wallace Foundation
Horace A. Moses Charitable Foundation
The Massachusetts Office of Outdoor Recreation
Microsoft Corporation
Quality Beverage
The Ruth H. and Warren A. Ellsworth Foundation
UKG

\$5,000 - \$9,999

Americo J. Francisco Charity Fund,
Estate & Realty/Charitable
Trusts at the Boston Foundation
Bayer HealthCare
City of Worcester

End 2 End Promotions
George W. Kelley Trust
Josephine G. Russell Trust
The Knights of Pythias
New England Development
Olde Scotland Links
Sea & Shore Contracting

\$2,500 - \$4,999

Artemas W. Stearns Trust
CVS Health Charitable Foundation
Getting Along Academy
Oppenheimer & Co.
Point32Health
R.H. White Companies
Starbucks Foundation
Neighborhood Grants Fund

\$1,000 - \$2,499

Boehringer-Ingelheim
Animal Health USA
Cail Family Foundation
Cornerstone Bank
Deloitte & Touche
Howland Family Foundation
Jackson Healthcare Charities
Moderna Therapeutics

PhRMA Foundation
Raymond James & Associates
Rockland Trust
Charitable Foundation
Suzanne Bennett
Charitable Foundation
UniBank
Wells Fargo

Recognitions

Easterseals Massachusetts has achieved Platinum status from GuideStar (Candid) and a Four-Star rating from Charity Navigator, the leading sources of nonprofit information. These recognitions underscore our commitment to transparency, financial accountability, and making a real difference in the lives of those we serve. Learn more about our impact by visiting our profiles on GuideStar and Charity Navigator.



Lifetime Giver pin recipient Carrie Larson has been a passionate advocate of Easterseals for nearly 60 years. UPPER LEFT: Shown with radio personality Dick Pace at a 1975 fundraiser.

PRESENTING THE GIVING LEAF – DEEPLY ROOTED IN EASTERSEALS MASSACHUSETTS’ MISSION: 80 years & growing

In November, we formally introduced The Giving Leaf, a tribute to individuals who in every season and every year resolve to make a difference in our community.

This special group of 366 philanthropists, whose love and kindness have supported equal opportunities for people with disabilities to live, learn, work, and play, received a leaf pin commemorating their milestone achievement, from 5 years through 30 years and a special lifetime achievement pin. Together, they achieved more than 6,200 years of support, generously volunteered their time and leadership experience, and donated in-kind and monetary gifts to grow our essential programs.

If you would like more information about The Giving Leaf please email philanthropy@eastersealsma.org.

LIFETIME GIVER

Joe Bellil & Linda Long-Bellil
Roy & Diane Brazelton
John & Jean Childs
Alison (Sunny) Coady
Sevan & Cheryl Demirdogen
Steve Grogan
Donald Johnson
Kirk & Sheila Joslin
Caroline & Kenneth Larson
James McLaughlin
David Rubin
Daniel & Anne Sacco
Robert & Susan Soldani
Stephen & Maryjane Walsh
Jay White
Stuart & Susan Whitlock
Walter & Vivian Zagrobski

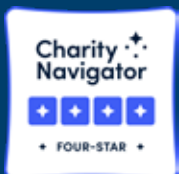
30 YEARS

John & Linda Freeman

25 YEARS

Cindy Aiken
Herbert Alexander
Bruce Anderson
E. Willa Belcher
Peter Black

Edward Borgatti, Jr.
Gioia Browne
Paul Chisholm Jr.
Stephen Connulty
Jeannie Diefenderfer
John Farady
Charles Forand
Mark & Janice Fuller
David Hoffman
Ed & Paula Ivaldi
Richard & Tracy Joslin
Lorraine Kelley-Alessi
Ann Kirby
William LaPierre
Paul Lavallee
Ladd & Tammy Lavallee
Joseph Lividini
Justin Morreale
Donald & Joan Morris
Karl Pease
Peter & Michelle Roque
Harry Salerno
Starbuck & Anna Smith
John & Debbie Stevens
Myles Striar
Anthony Tambone
Nafisa Zafar



Please scan to view our full listing of The Giving Leaf recipients.

Financials

As of August 31, 2024

Program Service Revenue	14,982,317
Grants & Contributions	813,837
Total Revenue	15,796,190
Expenses	17,169,150
Change in Net Assets from Operations	(1,317,960)
Non-Operating Revenue	1,895,505
Change in Net Assets	\$ 522,545
Net Assets at Beginning of Year	21,866,299
Net Assets at End of Fiscal Year	\$ 22,388,844

ASSETS

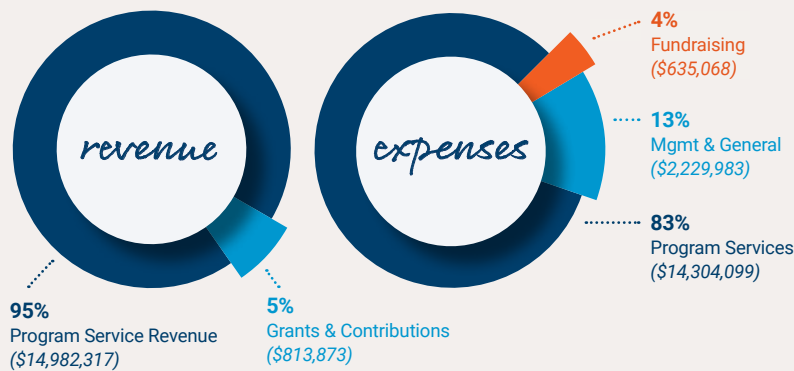
Cash	582,009
Prog. Fees Receivable, Net Allowance for Doubtful Accounts	742,899
Contributions Receivable	1,179,146
Prepaid Expenses and Other	109,250
Restricted Cash	448,734
Investments	13,266,687
Assets Held for Others	1,588,007
Right-of-Use Lease Assets-Operating	1,713,862
Property and Equipment, Net	7,900,801
Total Assets	\$ 27,531,395

LIABILITIES

Accounts Payable and Accrued Expenses	1,456,018
Notes Payable	384,786
Operating Lease Liability	1,713,740
Assets Held for Others	1,588,007
Deferred Revenue	-
Total Liabilities	\$ 5,142,551

NET ASSETS

Operating	12,608,496
Property and Equipment	7,516,015
Total Without Donor Restriction	20,124,511
With Donor Restriction	2,264,333
Total Net Assets	\$ 22,388,844
Total Liabilities and Net Assets	\$ 27,531,395



HONORING AN EASTERSEALS' ICON:

Thank you, Sheila



TOP: Steve Grogan presented Sheila and the Joslin family with an award in 2005. BOTTOM: Sheila & Kirk Joslin, ESMA President Emeritus.

Sheila Joslin has been a dedicated champion of ESMA since 1994, participating in the 24-hour Relay, Walk With Me, the Boston Marathon, and Move With Me events. She has raised thousands of dollars for the Matthew Joslin Fund to benefit our organization. This past summer, Sheila completed her final 10K walk, capping off the 2024 Move With Me event as the top fundraiser. Her commitment over the years has made an indelible impact on the disability community.

State Board

EXECUTIVE BOARD

Dawn Seiple, Chair
Collin Bray, Vice Chair
Avery Gray, Treasurer
Leslie M. Leslie, Secretary

BOARD MEMBERS

Jason Cort
Rebecca (Becca) Fracassa
Brian Franz
Maureen Goldin
Scott Gregory
Gloria Guerrera
David Hoffman
Maura Daly Iversen
Kathy Kittle
Maryellen (Mel) MacRae
Elizabeth (Libby) Merrill
William Oncay
Cesar Rodrigues
Harry Salerno
Lisa Stapleton
Allison Thompkins
Olivia Thompson
Erik Tobias
Heather Whitney
Nicole Wiemeyer

IMMEDIATE PAST CHAIR

Patricia Davidson

HONORARY LIFE MEMBERS

Roy Brazelton
Alison (Sunny) Coady
Caroline Larson
Daniel Sacco
Walter Zagroski

HONORARY MEMBERS

In memory of Dick Hoyt
In memory of Rick Hoyt
Steve Grogan

Regional Board

BOSTON

Sally Atwell
Amanda Berg
Justine Black
Amanda Boucher
Jordan Bray
Emir Cifci
Gabrielle Coughlin
Mark Flint
Michelle Higginson
Vito Honey
Debbie Hsu
Jiwon Kim
Sam Marchman
Amanda McMahan
Will Muter
Leslie Owens
Daniel Puopolo
Brynn Thompson
Mirsini Tzigizis

BRIDGEWATER

Ashley Bedard
Larissa Chartier
Tracy Coval
Josh Del Viscovo
Mary Lutz
Michelle Peck
Amy Reichenbach
Jill Silos

CENTRAL MA

Pam Barrett
Shannon Harvey
Kelly Johnson
Kristi Mendoza
Jennifer O'Connor

WESTERN MA

Dominic Mondon-Poirier
Ashley Nyman
Kim Watson

Tucker Llewelyn
Paul Medeiros
Jennifer O'Connor
Lorelei Randa
Leah Tinkham
& ESMA Management Team

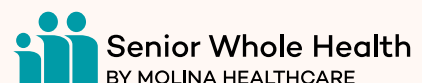
GRAPHIC DESIGN

Carissa Decelles

2024 Mission Partners

At Easterseals Massachusetts, we believe impactful change happens when we work together. Our Corporate Mission Partners help us achieve more and reach further in empowering people with disabilities. Each partnership is customized to reflect our partners' unique corporate social responsibility goals and employee engagement priorities, aligning with our diverse programs.

This year, we proudly collaborated with 12 Corporate Mission Partners to create opportunities that inspired teams, strengthened communities, and changed lives.



Credits

WRITERS, EDITORS & CONTRIBUTORS

Victoria Campbell
Cindy Conquest
Constance Eucker
Davis Fisher
Cyndi Forcier
Charlene Leith



Our *mission*
is to provide
services to
ensure children
and adults with
disabilities
have equal
opportunities to
live, learn, work,
and play.

eastersealsma.org



**State Headquarters &
MassAbility's Assistive
Technology Regional Center**

18 Chestnut Street, Suite 200
Worcester, MA 01608
508.757.2756

**Boston Office &
MassAbility's Assistive
Technology Regional Center**

89 South Street, Suite 102
Boston, MA 02111
617.226.2640

**Bridgewater Office &
The Bridge Center**

470 Pine Street
Bridgewater, MA 02324
617.737.6658

