

MAKING A DIFFERENCE

Summer 2019

Thank you for a *life-changing* Easterseals Telethon!

Another exceptional community-wide effort resulted in major success for the 2019 Easterseals Telethon. The show's "final tote" exceeded the \$1 million mark for the eighth straight year! Many thanks to all Telethon supporters. Your time, work, and generosity make *life-changing* therapy possible for area kids and adults, regardless of ability to pay.

The show aired live April 7 on WEHT Local, the only station in the U.S. donating 100% of production and air time for an Easterseals Telethon. Thank you to station management, production and news teams, and everyone at WEHT Local/Local 7 WTVW. They have helped our Telethons raise more than \$24 million since 1978!

Viewers of the 42nd annual broadcast learned about Easterseals' mission through live interviews and videos created by Direction by Newman in cooperation with WEHT Local/Local 7 WTVW. The E'ville Iron Street Rod Club's Cruise-In attracted visitors and donors. Evansville Mayor Lloyd Winnecke recognized generous supporters and proclaimed "Easterseals Day" in the city.

Event photos are available for free viewing and downloading from Roebing Photographics at www.myphotographyevent.com/Events/Easter-Seals/Easter-Seals-Telethon-2019

Department of Psychology & Wellness is expanding to meet region's needs. See page 2.

WEHT Local's Brad Byrd (left) presents a special Easterseals Lifetime Achievement Award to long-time Pacesetter volunteer & former Telethon host Brod Seymour for his decades of exceptional support.



Children display the "final tote" at the Telethon on WEHT Local. Photos by Roebing Photographics



"Cool Car, Gold Cash" sponsored by Old National Bank

Win a NEW CAR or \$15,000!

Enter before the "WILD WHEELS" DEADLINE

JUNE 28 for a chance to WIN 7 TICKETS!

\$50 each/3 for \$100 • 812-474-2348 • 3701 Bellemeade

More raffle details & order form on Page 3!

Expanding Dept. of Psychology & Wellness will change landscape for mental health services.

Neuropsychiatric conditions are the most disabling conditions in our country. Yet local families in crisis may wait 8-12 months for their child to be seen for an initial appointment for psychological testing with a pediatric mental health professional. The Easterseals Rehabilitation Center is working to improve access to mental health services by expanding its Department of Psychology & Wellness.



Dr. Jim Schroeder

Leading the effort is James Schroeder, Ph.D., a pediatric psychologist who joined Easterseals in June 2018. Dr. Schroeder, V.P. of the department, filled the position of Dr. Dorothy Stephens, who retired after a stellar 40-year career specializing in psychological testing and diagnostics.

To accommodate the expansion, existing space at the Easterseals Rehabilitation Center is being reconfigured. Major goals over the next 1-5 years include:

- **Provide the highest quality psychological services for children, youth and families.**

Additional psychology professionals will join the program this summer to dramatically increase pediatric therapy services locally with excellent testing and diagnostics.

- **Increase capacity within the region** to meet the critical need for psychology services

now and in the future. A major focus is becoming a regional training site for doctorate level psychology interns and post-doctorate fellows, and providing a rotation for psychiatric residents from the Stone Family Center for Health Services, a collaboration of the IU School of Medicine, USI, and UE. After completing their training, many of these professionals will remain in the Tri-State to serve local children and adults in years to come. The first group of doctorate level psychology interns begin their year-long placements this summer.

- **Create a community where mental health resources are available to all families**, regardless of whether they are clients of the Easterseals Rehabilitation Center. The program will offer public workshops and other resources, and will work with others to develop a culture that reduces stigma, provides support, and encourages lasting change. (A free Developmental Series for parents of young children is already in progress; please see page 4.)

To learn more about the Department of Psychology & Wellness and its expansion plans, please contact Jim Schroeder or Kelly Schneider at 812-479-1411. ■

Easterseals Tribute honors generous Sean Roy Hilt Foundation.

The Sean Roy Hilt Foundation was honored with the "Changing Lives" Award at Easterseals Tribute on June 5. Founded in memory of Sean Hilt by his friends, the Foundation's mission is to positively impact the lives of local children, adults, and families with disabilities by providing financial and emotional support through community involvement.

Since 2015, the Foundation has funded hundreds of therapy sessions at the Easterseals Rehabilitation Center, *changing lives* for local people who couldn't otherwise afford those essential services. Foundation members have also made a direct impact on many individuals, giving the precious gifts of hearing, speech, mobility, and independence.



Thank you, members of the Sean Roy Hilt Foundation!

Recently the Foundation funded a new system that allows the Easterseals Rehabilitation Center to precisely customize seating for individuals who use wheelchairs. This pressure mapping system will make a huge difference in comfort, health, and independence for local people with disabilities.

Thank you, Sean Roy Hilt Foundation, for keeping Sean's spirit alive—and for making a difference in so many lives. ■

The Easterseals Rehabilitation Center is working to change the way our community defines and views disability by making profound, positive differences in local people's lives every day.

Connect with us!

eastersealsrehabcenter.com

812.479.1411



Enter "Cool Car, Cold Cash" by the "WILD WHEELS" DEADLINE June 28! You could win SEVEN EXTRA TICKETS in the drawing for a new Sentra or \$15,000; \$5,000; or \$1,000!

You could win your choice of a 2019 Nissan Sentra 1.8 SV CVT (valued at \$20,470) or \$15,000 cash in the Easterseals "Cool Car, Cold Cash" raffle sponsored by Old National Bank. One \$5,000 2nd prize and one \$1,000 3rd prize will also be awarded. HURRY TO ENTER and help Easterseals fund therapy for local children and adults with disabilities.

The special "Wild Wheels" offer is currently in progress to encourage early entries. For each ticket purchased by June 28, the buyer is entered for a chance to win SEVEN ADDITIONAL TICKETS!

ONLY 3,000 TICKETS ARE AVAILABLE for \$50 each or 3 for \$100. Our goal is to NOT extend sales, and tickets are available ONLY WHILE THEY LAST (or until noon July 11, whichever occurs first). The prize drawing is scheduled for 12:15 p.m. July 11 at the Easterseals Rehabilitation Center. Entrants do NOT have to be present to win.

To buy tickets 8 a.m.-5 p.m. Mon.-Fri.:

- **Call 812-474-2348 or 812-437-2607** to use a checking or savings account or debit card (NO credit cards).
- **Visit the Easterseals Rehabilitation Center** and use cash, check, checking or savings account, or debit card (NO credit cards).

"Cool Car, Cold Cash" sponsors are Old National Bank, Kemper CPA Group, D-Patrick Nissan, WEHT Local/Local 7 WTVW, 93.5 THE LLOYD, 104.1FM WIKY, WABX 107.5 and HOT 96.

Indiana Raffle License #148801. Must be at least 18 to enter. Complete rules at eastersealsrehabcenter.com ■

Grand prize car features include...

- Dual zone automatic temperature control
- Six-way adjustable driver's seat
- Xtronic CVT (continuously variable transmission)
- Power door locks/auto-locking
- Push button ignition
- AM/FM/CD/USB audio/6 speakers
- Illuminated leather-wrapped steering wheel with audio controls
- Bluetooth hands-free phone system
- Cruise control/illuminated controls
- Halogen headlights
- 60/40 split fold-down rear seats
- Dual body-color power outside mirrors
- Driver & front passenger, side-impact and curtain air bags
- Eco & sport drive modes
- Active Understeer Control (AUC)



Easterseals Child Ambassador Sam Osborne shows off the "Cool Car, Cold Cash" grand prize car, a 2019 Nissan Sentra 1.8 SV CVT. The raffle winner will choose the vehicle or \$15,000!

TO ENTER BY MAIL: Send this completed form to be RECEIVED BEFORE JULY 11 to Easterseals, 3701 Bellemeade, Evansville, IN 47714-0136. Enclose check or money order payable to Easterseals. \$50 per ticket or 3 for \$100. Must be at least 18 to enter. INDIANA LICENSE #148801

Name _____ Ticket quantity _____

Address _____

City/State/Zip _____

Phone (H) _____ (W) _____ (Cell) _____

Email _____

Holiday World donations exceed \$500,000!

Holiday World welcomed more than 3,100 children with disabilities to its annual "Play Day" on May 8, and once again generously donated all admissions to Easterseals. This year's donation exceeded \$33,500, and brought the 27-year total to approximately \$512,000! Through the years, proceeds have funded therapy, equipment, therapeutic play areas, and many other programs. This year's donation will support expanding the Easterseals Rehabilitation Center's Department of Psychology & Wellness to meet the area's need for pediatric mental health services. Thank you, Holiday World!

Join us for a free Developmental Series.

Parents and caregivers of young children (birth-age 5) are invited to a free Developmental Series at the Easterseals Early Learning Center, 621 S. Cullen in Evansville, 4:15-5:00 p.m. Please call 812-474-2244 to register for these upcoming sessions: **June 25** - Thinking & Problem-Solving Skills in Young Children; **July 23** - Encouraging Language Development & Social Communication in Young Children; **Sept. 24** - Coaching Your Child into a Healthier Lifestyle; **Oct. 22** - Encouraging the Shy Child.

Volunteers make a difference!

Can you help Easterseals by giving your time? To sign up for these opportunities or for more details, please contact Cydney Quinn, 812-437-2609, cquinn@evansvillerehab.com

- **E'ville Iron Frog Follies, Fri.-Sun., Aug. 23-25, Vanderburgh 4H Center:** Daytime shifts at concession stands, t-shirt booths & Easterseals half-pot tent.
- **Easterseals "Angels," Mon.-Fri., various times during the year, between 8 a.m. & 5 p.m.:** Daytime office assistance with labeling/stuffing envelopes, preparing mailings, etc.



**Join us for our annual
scramble Tuesday,
September 24!**

WHAT'S NEW IN 2019

- Christmas Lake Golf Course in Santa Claus, IN
- SINGLE SHOTGUN at 11:30am
- Limited to 32 teams! Hurry to REGISTER EARLY!
- Lunch & Dinner included, plus TONS OF PRIZES!

**Team Registration
OPEN NOW!**

Hole Sponsorships Available!

Contact Carolyn Franklin
812-437-2607 or
cfranklin@evansvillerehab.com

Mark your calendar! Details @EastersealsRehabCtr on Facebook

July 11: "Cool Car, Cold Cash" drawing. Easterseals Rehabilitation Center, 12:15 p.m. OUR GOAL IS TO SELL ALL 3,000 TICKETS AND TO NOT EXTEND SALES. Call 812-474-2348 NOW to use your checking or savings account or debit card. \$50 each or 3 for \$100. Entrants do NOT have to be present to win! Details on p. 1 and 3.

NEW! **Second Wednesday of each month: "Dine Out for Easterseals!"** Each month, different restaurants will host "Dine Out for Easterseals" and donate a portion of that date's proceeds. Check our Facebook page often @EastersealsRehabCtr for locations!

August 23-25: E'ville Iron Street Rod Club "Frog Follies." Vanderburgh Co. 4-H Center. Friday-Saturday 8 a.m.-4:30 p.m., Sun. 8 a.m.-2 p.m. \$5 per person (kids under 12 are free). Thousands of pre-1948 street rods, a craft show, swap meet and concession stands available. Enter the half-pot raffle at the Easterseals tent for just \$5 per chance! E'ville Iron generously donates a portion of Frog Follies proceeds to Easterseals. Details at frogfollies.org.

Driving independence...

Audubon Chrysler donates van, while Christopher & Dana Reeve Foundation funds state-of-the-art equipment and modifications.

For almost 40 years, the Easterseals Rehabilitation Center's driver's training program has opened new worlds of independence for individuals with disabilities. Now, thanks to the generosity of **Audubon Chrysler Center** and the **Christopher & Dana Reeve Foundation**, even more individuals can take control of their own transportation.

The Easterseals Rehabilitation Center's previous training minivan was over 10 years old and couldn't accommodate newer, larger, more complex custom power wheelchairs. It also wasn't equipped with the most up-to-date driving technology available. Those obstacles are now gone!

Audubon Chrysler of Henderson, KY, generously donated a late-model Chrysler Town & Country minivan. Modifications and driving systems were funded by a **Reeve Foundation "Quality of Life" Grant**. That program, created by the late Dana Reeve, strives to "empower individuals with disabilities and their families by improving quality of life through inclusion, access, independence, opportunities for community engagement, and other life-enhancing endeavors."

Now the Easterseals Rehabilitation Center's qualified staff can evaluate and train individuals, using innovative systems that fit each person's unique needs and abilities. Once a driver successfully completes training and is licensed, his/her own vehicle can be equipped with the same adaptations and controls (typically funded for the individual through the State of Indiana's Vocational Rehabilitation Services, or by similar programs for clients from Kentucky and Illinois).

For more information on driver's training through the Easterseals Rehabilitation Center, contact Rusty Schimmell, V.P. of Assistive Technology, 812-479-1411 or rschimmell@evansvillerehab.com ■



Former Easterseals Adult Ambassador Josh Miller demonstrates the new driver's training vehicle, with Easterseals Rehabilitation Center staff Joe Ulrich (top) and Rusty Schimmell (bottom). Individuals using large complex power wheelchairs can easily enter the modified van and access the wide variety of driving controls directly from their chairs.

**Win a new
Nissan Sentra
or \$15,000!**

2nd Place \$5,000
3rd Place \$1,000

Enter "Cool Car,
Cold Cash" at
812-474-2348

Max. of 3,000
tickets available!

HURRY!
ENTER BY
JUNE 28 & YOU
COULD WIN 7
EXTRA TICKETS!

\$50 per ticket,
or 3 for \$100

Details on page 3

Enroll infants, toddlers, preschoolers for August openings at Easterseals Early Learning Center!

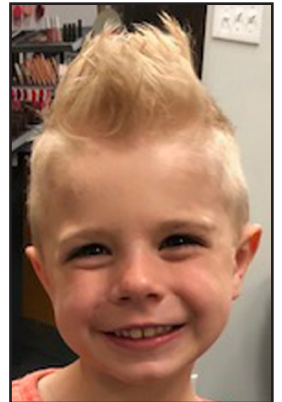
The inclusive Easterseals Early Learning Center is accepting applications for August enrollment for infant, toddler, and preschool age groups. **Families are encouraged to apply as soon as possible, while openings are still available!**

The Early Learning Center's goal is to help children of *all abilities* reach their greatest potential and enter kindergarten ready to learn and succeed. The program is state licensed and has reached Paths to Quality Level 3.

Over the past year, the Center added an arts enrichment program (incorporating art, music and movement, dramatic play, etc.), a therapeutic sensory garden, and an expanded STEAM (science, technology, engineering, arts, math) learning program. Kids of all abilities thrive in the inclusive environment!

The center at 621 S. Cullen Ave. in Evansville is the home of: **Milestones Early Care and Education**, a full-day, full-year program for children of all abilities, 6 weeks-3 years of age; **LEAD Academy** (Learn, Engage, Achieve, Discover), a full-day, year-round inclusive preschool with a wide ranging educational curriculum for children of all abilities, age 30 months-6 years; and the **Dan & Nancy Mitchell Therapeutic Preschool**, a half-day program for children age 3-5 with a developmental disability who are referred by Evansville-Vanderburgh School Corporation.

For details, contact Ann Feldhaus, **812-474-2244**, afeldhaus@evansvillerehab.com. ■



Eli Harrell, 5, is one of LEAD Academy's 2019 graduates heading to kindergarten. Limited openings are now available for various ages!