



A PROGRAM OF



Table of Contents

About Easterseals Colorado	4
About Rocky Mountain Village	5
Map of Rocky Mountain Village	7
The Magic of Rocky Mountain Village	8
Letter from Rocky Mountain Village Camp Director	10
Rocky Mountain Village Staffing	11
Rocky Mountain Village Camp Committee	12
The Funding Programs	14
Rocky Mountain Village Capital Projects	15
Staff Lodge	16
Additional Capital Projects/Needs	20
Capital Project Naming Opportunities	24
Rocky Mountain Village Endowment	25
Endowment Naming Opportunities	26
Annual Fund	27
About Your Contribution	30
Stock Transfer Information	32
Commitment Form	33
In-Kind Donation Form	34
Easterseals Colorado Board of Directors	35

About Easterseals Colorado

Established: October 8, 1926

Mission: Leading the way to full equity, inclusion, and access for people with disabilities, their families, and caregivers across Colorado by enhancing well-being, expanding employment, and elevating community.

Vision: A future where people with disabilities, their families, and caregivers ALL can thrive and fully participate in our communities.

Overview: Since 1926, we have been providing direct services to Colorado residents who are affected by disability or health challenges. As a vital resource for all people with disabilities and caregivers in rural and urban communities across the state, Easterseals Colorado provides programs and support that enhance quality of life and create opportunities for greater independence.

Area Served: Easterseals Colorado programs support not only the Denver metro area, but the entire state of Colorado.

Staff: 78 full-time and 22 part-time employees

Volunteers: 500 across all programs

Federal Employee Identification Number: 84-0412575

Is Easterseals Colorado affiliated with Easterseals National? Yes. Easterseals National and Easterseals Colorado are both guided by the principles of cooperation, innovation, and collaboration that are hallmarks of the nation's work for people with disabilities. Easterseals Colorado maintains its own 501(c)(3) non-profit tax status. Funds raised by Easterseals Colorado supports programming that stays right here in Colorado.

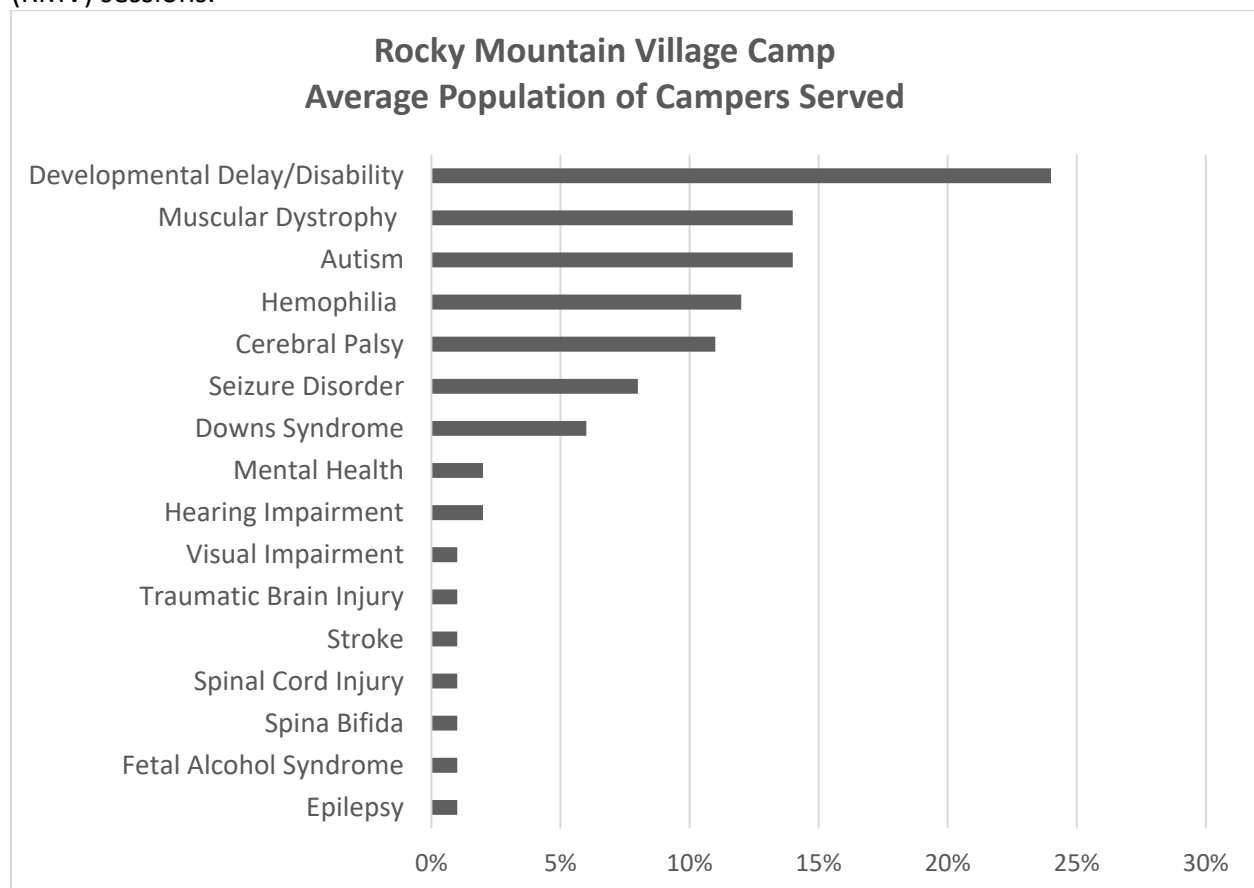
We are changing the way the world defines and views disability by making profound, positive differences in people's lives every day.

About Rocky Mountain Village

Program Vision: For campers to experience a safe, welcoming, environment guided by trained, caring staff who support campers' efforts so that when they return home, they are more self-reliant and independent.

Program Overview: In 1951, Easterseals Colorado's Rocky Mountain Village (RMV) ran its first summer session with 36 campers attending. Since, RMV camp has provided enriching, memorable, and life-changing recreational camping services annually for more than 1,300 children (six years old and up), adolescents, and adults who live with a wide spectrum of disabilities, both cognitive and physical. RMV is fully accessible and provides a safe, barrier-free environment for its campers to experience all aspects of camp without the usual limitations. All programs stress independence and challenge for people with disabilities in a cooperative outdoor living environment. The program is licensed by the Colorado Department of Social Services and is accredited by the American Camping Association.

Campers: Each summer, campers with a variety of disabilities attend Rocky Mountain Village (RMV) sessions.



Upon arrival, campers are paired with their counselor who will address their physical, emotional, and recreational needs throughout the week. Our counselors are dedicated to creating an unforgettable camp experience catered to each individual camper. Each day, cabins

rotate among different program areas where campers can try different adaptive activities. Our creative activity specialists work to adapt their activities so that every camper can participate to their fullest capacity.

Camp Session Examples:

- **Adventure Camp.** Easterseals Colorado camp for children ages 6 - 14 with physical and/or developmental disabilities, including those individuals on the autism spectrum.
- **Talking With Technology Camp.** Children's Hospital camp for young people ages 6 to 21 who use augmentative and alternative communication (AAC) systems.
- **Leadership Camp.** Easterseals Colorado camp for teens ages 14 - 21 with physical and/or developmental disabilities.
- **Rendezvous Camp.** Easterseals Colorado camp for young adults ages 21 - 30 with physical and/or developmental disabilities.
- **Summit Camps.** Easterseals Colorado camp for adults ages 30+ with physical and/or developmental disabilities.

During the off-season, Rocky Mountain Village (RMV) hosts R&R weekend respites and functions as a rental and retreat facility for groups and individuals. More than 2,000 other individuals attend off-season sessions, ranging from church and youth groups to Easterseals Colorado's own "Respite Care Weekends." Many disabled and nondisabled skiers from throughout the country use RMV for their lodging and meals when skiing one of the nearby Colorado ski areas.

Parents: For most families, camp and weekend respite sessions are the only break they get from caregiving. Camp allows them time with their other children, a spouse, or just a moment for themselves.

Camperships: It costs \$2,500 per camper to attend a week of camp. Rocky Mountain Village (RMV) subsidizes \$1,310 for every camper with applications available for additional campership subsidies up to \$400. Costs reflect the staff and resources required to ensure a safe, successful experience for all campers and participants.

"When my son goes to camp
I reconnect with my wife.
I don't think we would still
be together without camp.
It recharges us and reminds
us we can care for our son,
as long as we get a break."

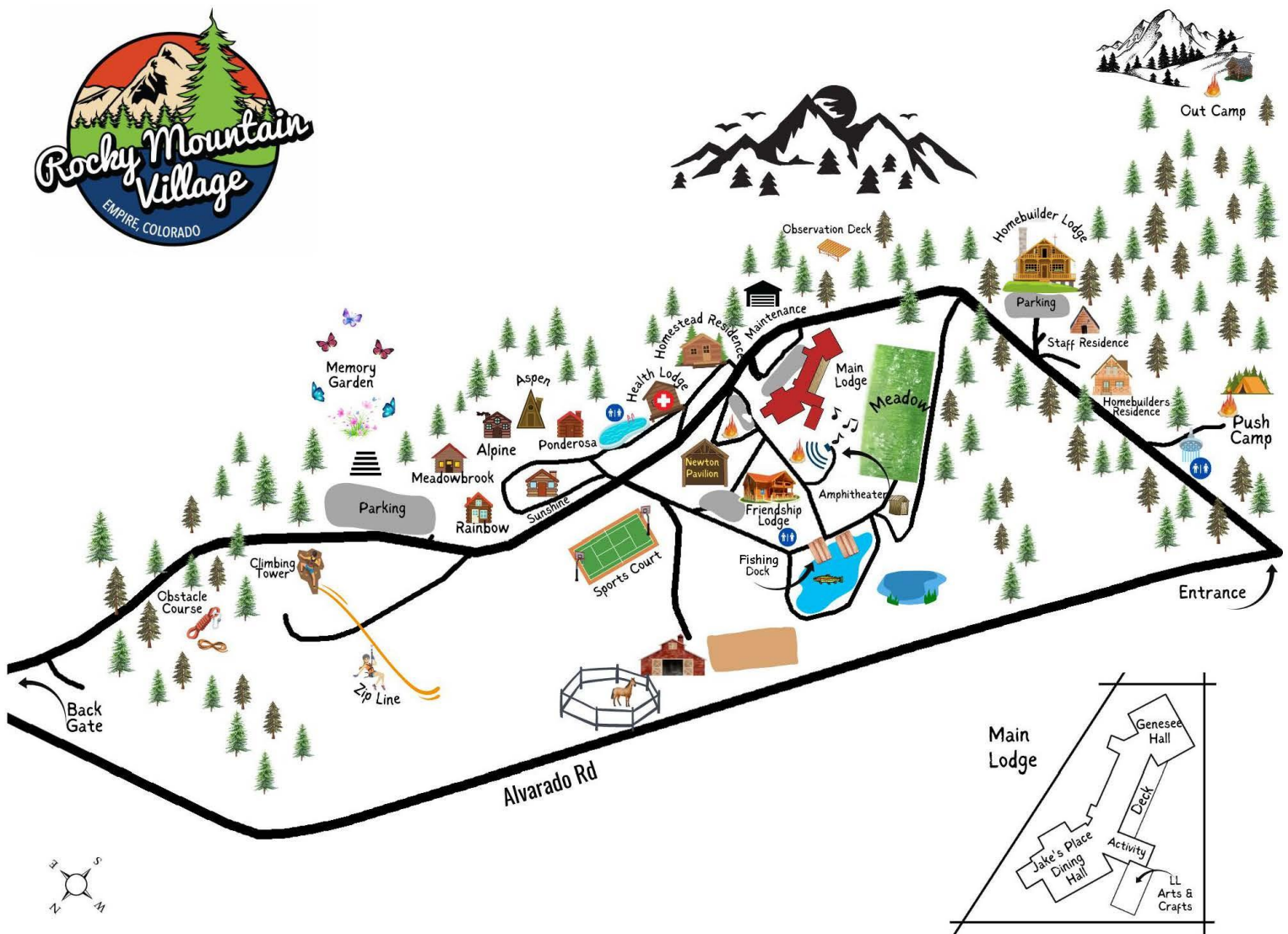
*Rocky Mountain Village
Camper Parent*



Impact: The camp experience:

- Improves a camper's ability to adapt to new environments with more ease and comfort.
- Provides respite hours to families living with disability.
- Helps campers progress in their ability to adjust to new care providers.
- Further develops camper's social skills.
- Aids campers in increasing their self-esteem.

Rocky Mountain Village, located on 220-acres, sits within the City of Empire, County of Clear Creek, Colorado.



The Magic of Rocky Mountain Village

Centrally located in the state, Rocky Mountain Village (RMV) consists of 220 glorious mountain acres. RMV brings a little bit of magic into a world where it is not always there. It is a place where campers can be themselves and not always be judged for their disabilities. Campers are capable of everything at RMV. It is a magical place where people make magic happen.

Rocky Mountain Village (RMV) stands on the threshold of greatness, due in large measure to its remarkable Camp Committee and Board of Directors' leadership. Fundraising efforts seek to transform the RMV camp in profound and enduring ways. Among the initiatives are new facilities, reconfigured facilities, upgraded infrastructure, program enhancements, and an endowment to help fund operations. RMV will blossom perfectly amidst the exciting camp renovation spirit and energy.

Life at camp involves a variety of activities. Campers partake in everything from performing skits, participating in a Prom, camp-wide games, musical performances, and talent shows – all just some of the camps' longstanding traditions that occur each week on top of the daily activity options.

Rocky Mountain Village (RMV) has 13 accessible activities for campers to explore and enjoy throughout the summer:

- Archery
- Arts and Crafts
- Climbing wall
- Dances
- Day trips
- Fishing
- Hiking
- Music and drama
- Outdoor cooking
- Overnight, outdoor camping
- Swimming
- Travel camp
- Zip line



Hear directly about the magic at Rocky Mountain Village (RMV) from our camp staff and campers by watching a short video by clicking [here](#), or going to Easterseals Colorado's YouTube channel at <https://www.youtube.com/watch?v=Q7zhKzb8G7M>



Rocky Mountain Village
2644 Alvarado Rd
Empire, CO 80438

**Over 3,000 s'mores are made each summer at
Rocky Mountain Village.**



Letter from Rocky Mountain Camp Director

Easterseals Colorado has been an indispensable resource for people and families challenged by disability since 1926. And our Rocky Mountain Village (RMV) in Empire, Colorado, established in 1951, is fully accessible and annually used by more than 1,300 children and adults living with a wide range of visible and invisible disabilities who, often, have complex medical and personal needs.

Rocky Mountain Village's vision is for campers to experience a safe, welcoming, environment guided by trained, caring staff who support campers' efforts so that when they return home, they are more self-reliant and independent.

We want to propel Rocky Mountain Village (RMV) forward in continuing to create opportunities for camper independence and inclusion than what we are doing now. To do so, RMV needs to update its facilities and activity areas to enable further accessibility.

With the Rocky Mountain Village (RMV) Camp Committee, Easterseals Colorado and RMV leadership, we have been developing a comprehensive capital projects initiative to assure proper positioning of RMV for the future. We envision a camp dedicated to improving the camp life experience for campers and staff. It is our desire to lunge forward and not be in a reactive mode in meeting camp needs. We are working together as an integrated team to fulfill RMV's vision. Our planning has involved an effective group of professionals who have completed extensive discussions with those inside and outside RMV.

It is remarkable to note that our community has reached such great heights over the past few years. To some of us, it seems like only yesterday when the Friendship Lodge was constructed in 2019. Today, as we plan to meet the needs of campers and staff, we are inspired by the work of such early contributors, as well as by all the vendor partners who continue to nurture and transform Rocky Mountain Village (RMV).

We look forward to everyone joining us in our vision.

Sincerely,

Bill Joe Averitt

Bill Joe Averitt
Camp Director

Rocky Mountain Village Staffing

Rocky Mountain Village (RMV) has in place a staff to conduct its day-to-day operations. The staff include the following:

Bill Joe Averitt

Camp Director

baveritt@eastersealscolorado.org

254.226.2419

Dave Dennis

Maintenance (part-time)

Stiliyana Koeva

Housekeeping (part-time)

Sarah MacNaughton

Operations Coordinator

smacnaughton@eastersealscolorado.org

303.233.1666x444

303.419.2422 Mobile

John Onago

Facility Maintenance Manager

jonago@eastersealscolorado.org

Elisabeth Osorio

Assistant Program Manager

eosorio@eastersealscolorado.org

Seema Sibouyeh

Hospitality Intern (part-time)

Katie Stegall

Operations Manager

kstegall@eastersealscolorado.org

303.569.2333 x3 RMV Office

303.233.1666x424

720.749.8399 Mobile

Melinda “Mindee” Sutton

Camp Nurse

msutton@eastersealscolorado.org

720.989.7540

Program Staff: In addition to the year-round camp staff listed above, approximately 45 summer staff are hired, most of whom are college students preparing for careers in special education, therapy, or medicine. For college bound counselors, college credit is also offered. A summer volunteer program for high school students allows young people to serve as counselors-in-training. In addition to on-site registered nurses, Rocky Mountain Region physicians and nurses volunteer one week at a time to live in residence at the camp and provide medical care services.

Program Volunteers: Organizations and individuals lend their efforts that include painting, building boardwalks, working with children, cooking, planting, and cleaning to name a few ways of support. The camp is successful and makes a difference in the lives of its campers because of the many volunteers that support us. Groups and individuals are accommodated and work throughout the year.

Rocky Mountain Village Camp Committee

James Bettinger

buggsbettinger@hotmail.com

Tim Bounds, Evans Case LLP

Bounds@EvansCase.com

Amelia Dery, Architect

ameliadery@gmail.com

Michael Drennen, Alpine Lumber Co.

mdrennen@alpinelumber.com

Tom Houlihan, *Committee Chair*

Retired (Colorado Electric Supply)

thoulihandenver52@icloud.com

Brian Howell, Charles Schwab Charitable

Brian.Howell@Schwab.com

Dave Jackson, Jackson Design Build

dave@jacksondesignbuild.com

Tracy Kovach, Augmentative Comm. Serv.

KovachTracy@aol.com

Chris O'Donnell, Alpine Lumber Co.

codonnel@alpinelumber.com

Debbie Reichert, Camper Parent

rockymtndeb@aol.com

Ben Van Dyk, Van Dyk Construction

bvandyk@vandykconstruction.com

John Van Dyk, Van Dyk Construction

jvandyk@vandykconstruction.com

Travis Wright, Alpine Lumber Co.

twright@alpinelumber.com

Easterseals Colorado Staff:

Bill Joe Averitt, *Camp Director of Rocky Mountain Village*

Easterseals Colorado

BAveritt@eastersealscolorado.org

Sharon Kay Brown, *Vice President of Development*

Easterseals Colorado

SBrown@eastersealscolorado.org

Ross Howell, *Business Relations Specialist*

Easterseals Colorado

rhowell@eastersealscolorado.org

Krasimir Koev, *COO*

Easterseals Colorado

KKoev@eastersealscolorado.org

Roman Krafczyk, *President/CEO*

Easterseals Colorado

RKrafczyk@eastersealscolorado.org

Katie Stegall

Operations Manager

kstegall@eastersealscolorado.org

“I can’t imagine what life would be like without having Rocky Mountain Village; it’s an extension of our family.”

-Camper Parent mom whose daughter has Down Syndrome



The Funding Programs

The major elements of Rocky Mountain Village (RMV) funding are capital projects, growth of its endowment, and annual fund development. The RMV leadership and Camp Committee has approved the following goals for these components:

Capital Projects Fund: These funds are to construct either new facilities or make significant, long-term renewal improvements to existing facilities. This can consist of new construction, expansion, renovation, or replacement of an existing facility or facilities. Project costs can include the cost of land, engineering, architectural planning, and contract services needed to complete the project.

Rocky Mountain Village (RMV) currently needs **\$3 million** to construct and improve a multitude of facilities among its campus. This large mountain environment needs a lot of care and help with materials and equipment is always welcome.

Endowment Fund: A permanent investment that ensures the long-term financial stability and growth of Rocky Mountain Village (RMV) and its program. The endowment will be used to support individual campers, group activities, counselor scholarships, maintenance, replacement of aging equipment, and daily operations. The Endowment is exclusively for these purposes and is available to make up any shortfall between annual operating requirements and the revenue generated by the Annual Fund. That annual deficit is approximately \$200,000.

Rocky Mountain Village (RMV) currently is seeking funding of **\$7 million** in an endowment toward its long-term goals that will generate income to underwrite a sizable portion of Rocky Mountain Village's ongoing financial needs.

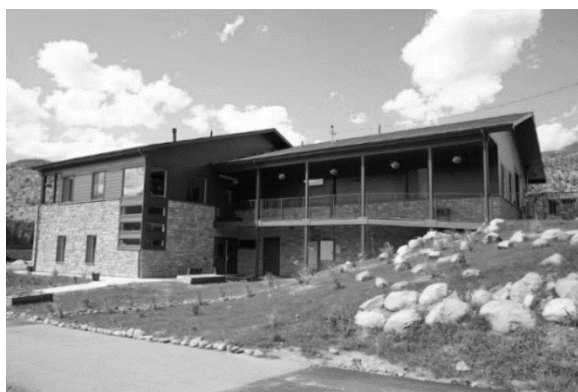
Annual Fund: This represents all the money Rocky Mountain Village (RMV) needs to raise on an ongoing basis throughout the year. RMV annual operating budget is **\$1.2 million**, which is raised through a variety of fundraising programs, which are described in the following pages.

Rocky Mountain Village Capital Projects

Getting Ready for the Next 72 Years: Rocky Mountain Village (RMV) camp has been called home for the past 72 years to many of its campers and their families. Even as we celebrate milestones such as building Friendship Lodge for our campers; to the completion of Chelsea's Boardwalk making it much more enjoyable for our campers with mobility challenges; to the renovating of Frontier Lodge which allowed for additional staff housing, increased storage, and an updated arts and crafts space. Please remember that we're never "done" improving RMV to support our campers and their families. This incredibly special place is here for our campers, year after year, because of the generosity of our donors.

Currently, we have plans for every building at camp and dreams of new structures. With all the improvements that need to be made and the list of new things we want to add for our campers and staff, it is time to raise the necessary funds to meet our overall capital project goal of **\$3 million**.

What better way to honor the past than to invest in the future of Rocky Mountain Village (RMV) to ensure camp will continue to thrive for the next 72 years and beyond!



PHASE 1: FRIENDSHIP LODGE, COMPLETED 2019.

Through the gift of a major donor, the building community, and with our own invested resources, Friendship Lodge, was completed in 2019. It is a 7,500 square foot, 32 bed lodge, where campers with disabilities and staff are housed during summer sessions. The Lodge is fully accessible and features soaring ceilings with ADA finishes. It was built to provide ease of

accessibility and replace the former 600 square foot Frontier Lodge which did not consider accessibility such as lighting, plumbing, or space when it was built in 1935.



PHASE 2: FRONTIER LODGE RENOVATION, COMPLETED 2021.

This phase completed the interior of Frontier Lodge by the end of 2021. Camp has the need overtime to meet housing for up twelve key staff and their families. To help address this need, a capital project was undertaken to renovate and expand Frontier Lodge to create staff apartments, increased storage, and an updated arts and crafts space. The newly renovated space is now called Stonehenge Apartment.

PHASE 3: STAFF LODGE



Current A-Frame Staff Residence

A Staff Lodge is currently in the works and will replace the former A-Frame staff residence. This phase, combined with Phase 2, aids us in providing the outcome Rocky Mountain Village (RMV) needs—additional, quality, permanent housing—so it may attract and retain quality staff to continue to meet the significant needs of its campers.

Achieving Rocky Mountain Village’s mission to serve campers in a safe environment cannot happen without *quality staff*. As a non-profit, we struggle to offer a

compensation package that attracts and retains quality personnel—dedicated people that are a good fit with the camp culture. Adding the challenge of not having adequate staff housing makes the hiring process even more difficult.

Currently, some staff live in cabins with few to no amenities. Some cabins are interchangeably used between staff depending on camp needs; thus, displacing staff causing them to move several times during the year to other inadequate, temporary lodging. This reality makes it even more difficult to attract staff that are married and/or have families—there are just no options that offer suitable housing for them.

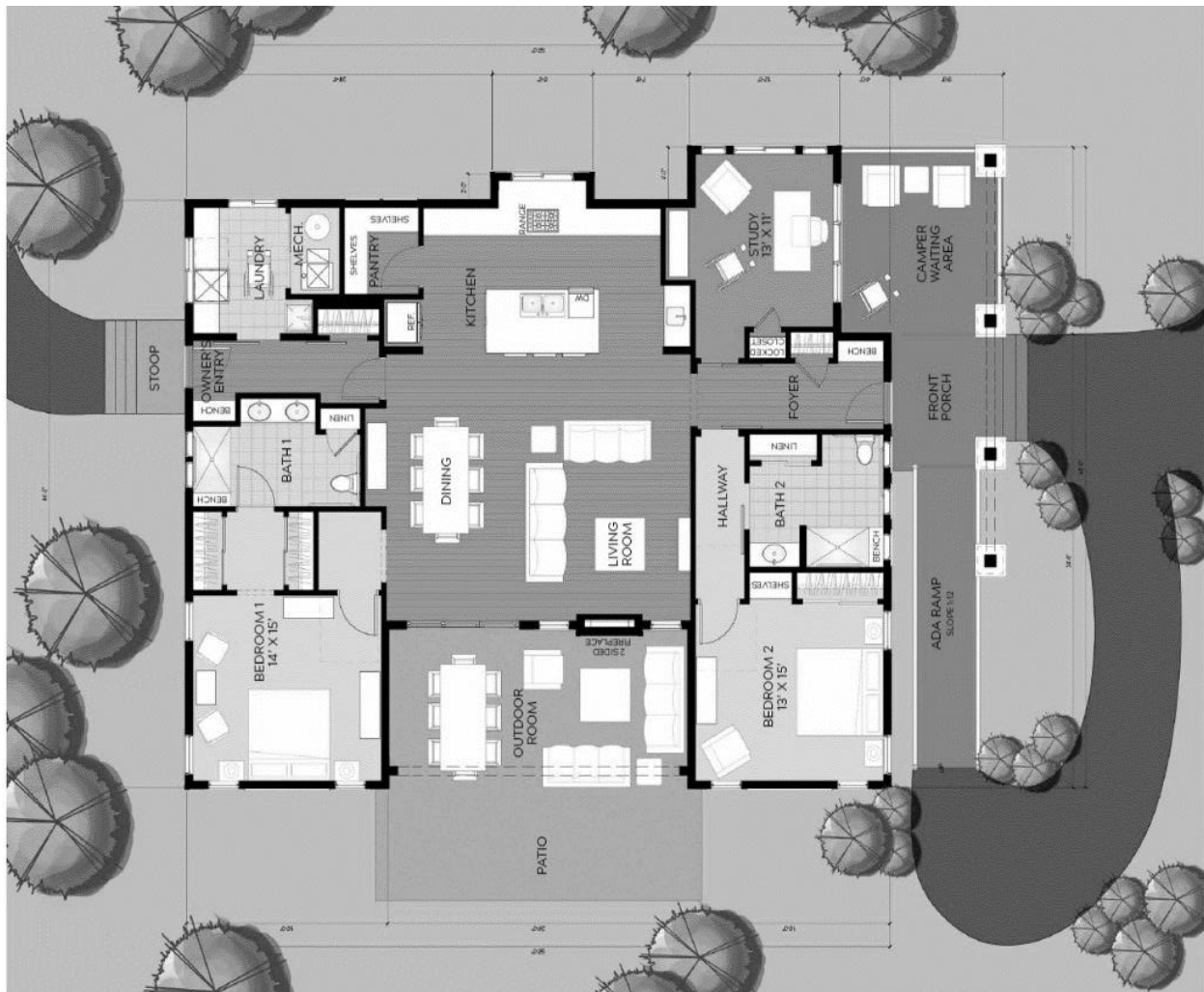


Rendering of Planned Staff Lodge

The Staff Lodge design is 2,200 square feet and will consist of two bedrooms and two bathrooms, living room, kitchen, dining, study/office, laundry room, outdoor living space, as well as a camper waiting area with ADA ramp. The waiting area is designed to serve as a nurse's station for campers.

The newly constructed Staff Lodge will:

- Allow for family housing for a staff nurse and their family.
- The facility will better meet the medical needs of campers and staff.
- Increases ADA-friendly accessibility.
- Meets and exceeds new codes.



Staff Lodge Cost: \$745,092

This estimate is based on the following assumptions:

1. Standard Builders fees are all donated.
2. All architecture and engineering have been donated.
3. Camp contacts for trash removal, porta john, etc. will reduce cost.
4. No new water or sewer utilities will be required.
5. Easterseals initiates all subcontractor payments to avoid General Liability insurance issues.

Staff Lodge Budget

Item Description	Budget Estimate
Total Project Consulting/Design	41,800
Total Fees and Permits	4,500
Total Demolition	20,500
Total Construction	386,087
Total Utilities	1,200
Total Finish Allowances	92,527
Total Contingencies	34,331
Total Marketing	0
Total Taxes	0
Total Insurance	11,619
Total Land Costs	0
Total Loan Fees and Interest	0
Total Other Costs	152,528
TOTAL PROJECT COST	\$745,092

GoFundMe pages are available for those who wish to support Rocky Mountain Village (RMV) through this platform. Please share with friends and family to increase awareness about our fundraising and camper needs.



Staff Lodge: Click [Here](https://www.gofundme.com/f/8h6sc-rmvc) (or go to <https://www.gofundme.com/f/8h6sc-rmvc>)

Sports Court: Click [Here](https://www.gofundme.com/f/sports-court-renovation) (or go to <https://www.gofundme.com/f/sports-court-renovation>)

A list of the companies providing donated services to help offset the cost of the project are:

[Alpine Lumber Co.:](#) Employee ownership makes Alpine Lumber's attention to detail and provision of quality products and services unparalleled. From its seventeen uniquely tailored lumberyards to the detailed nuances of its millwork and truss operations, they pride themselves on building relationships through integrity, timeliness, efficiency, and quality.

[Comcast.](#) Since the founding of Comcast in 1963, our core values have been rooted in improving the communities where our employees, customers, and audiences live and work. As we face the extraordinary challenges stemming from the COVID-19 pandemic, we continue to uphold our commitment to diversity, inclusion, and keeping people connected to what matters most.

[Diamondback Engineering:](#) Diamondback Engineering & Surveying develops projects with high quality design, expertise, and environmental and cost considerations. Its principals have over 25 years of experience in civil engineering, municipal engineering, and surveying. They combine their experience with long term partners in structural engineering, transportation engineering, LEED architecture, electrical engineering, geotechnical engineering, and geographic information systems.

[EVstudio:](#) Delivering 360-degree expertise in architecture and engineering, EVstudio's mission is to make a profound impact on their built environment, their clients and each other – and to create something that is bigger than all of us. The vision to inspire. The expertise to make it work. At EVstudio, they are changing the world with each project we create.

[Jackson Design Build:](#) Jackson Design Build combines dream home visions with meticulous attention to detail to create the perfect home for its clients. Their approach is practical and sensible: their homes will be carefully crafted to reflect your present desires while still accommodating the client's future needs.

[KGA Studio Architects:](#) A nationally recognized architectural studio specializing in residential design. They believe the best design is one that serves the client, which is why they strive to create personalized work that excites and improves daily life.

[Van Dyk Construction:](#) Van Dyk Construction specializes in residential framing. They work with large home builders to make sure their property has a stable construction that will last for years. With their help, we can enhance the aesthetic appeal of facilities. They proudly serve the Denver Metropolitan Area.

Staff Lodge Timeline

	2023											
	J	F	M	A	M	J	J	A	S	O	N	D
Project Consulting/Design												
Case Statement												
Fees and Permits												
	2024											
	J	F	M	A	M	J	J	A	S	O	N	D
Demolition												
Foundation/Flatwork												
Construction												
Occupancy Permit												
	2025											
	J	F	M	A	M	J	J	A	S	O	N	D
Construction												
Occupancy Permit												

ADDITIONAL CAPITAL PROJECTS/NEEDS: There is a series of projects designed to upgrade and overhaul our facilities over the course of several years. These capital projects are listed below in more detail.

Medical Center: \$1,200,000



The existing Medical Center no longer supports the needs of camp nor accessibility. The new center will offer modernized amenities and improved space to provide first-rate medical care to campers and staff. The plans are to expand it to 3,000 square feet allowing for a 10-bed fully accessible medical center.

Hardie Board Siding: \$262,500



Siding is strong and long-lasting, but it's not impervious to wear. Though we can patch small touch-up areas, there are damaged siding panels where entire new panel sections are needed. It is estimated that a total of 150,000 square feet of Hardie board is needed to repair facilities onsite. Hardie board can cost anywhere from \$1.50 to \$3.50 a square foot.

Amphitheater: \$250,000



The amphitheater is camp's open-air venue used for entertainment, performances, and special events. Camp would like to have the Amphitheater more accessible for its campers such as having paved sidewalks for wheelchairs. There is also a need for covered seating to protect campers from excessive sun exposure when attending activities and events at the amphitheater.

Picnic Pavilion: \$200,000



The Picnic Pavilion structure located to the east of the Main Lodge is our dedicated open space area intended to provide a covered shelter for use by campers and visitors for dining, seating, grilling, performances, and presentations. Planned renovation for the Pavilion includes an AV system and screen, installed garage doors all around the sides of the structure with some kind of enclosures at the large ends. This will give us the ability to close in the structure on very windy days and make it a functional space year-round.

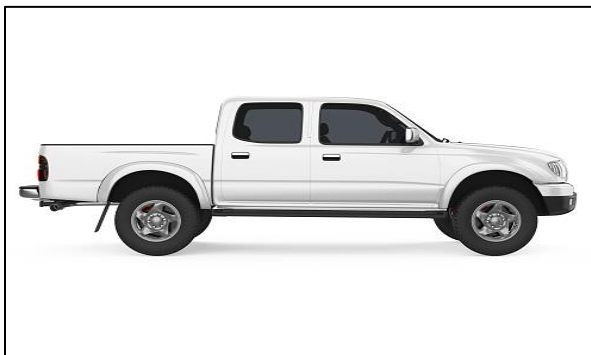
Sports Court: \$80,000



Our sports court was built in the 1980's and is one of the favorite places for our campers to use. It serves as a multi-purpose outdoor enclosure that they enjoy using for multiple sports such as basketball, tennis, volleyball, and other games and activities. The court is fenced off and is an ideal location and safe place for campers and counselors to participate in these activities. It is also used as a gathering spot due to its central location for when camp runs emergency drills or other group gatherings.

While the sports court was maintained and resurfaced regularly, the harsh weather and being built on black top asphalt, now requires it to be completely rebuilt. Creating something more sustainable long-term requires building it on a solid concrete foundation. The project will require removing the existing sports court material, ground prep work, installing 95 cubic feet of concrete, applying a finishing layer, and painting the sport court.

Four Wheel Drive Vehicle: \$50,000



Camp would like to obtain a 4WD/AWD vehicle for staff and emergency transportation. Whether the vehicle is new or used, it is critical that we have the necessary transportation especially in situations of emergency such as evacuations or medical care.

Cabins: \$25,000/each

Six of the seven camper cabins are in Civitan Village. These cabins were built by the Homebuilder's Association in the early 1960's. The life of our beloved cabins has come to an end. The reality is that building, and safety codes have changed over the decades. It is time to overhaul these cabins with a complete remodel that will serve us well in the future.

Each cabin can accommodate up to fifteen campers. Each camper is placed in one of ten, week-long camping sessions based on disability and age. Campers are then assigned to one of the cabins with a member of the counseling staff. Cabin groups attend camp activities together, plan independent cabin-based activities and work together to develop a small, enthusiastic camp community. In each cabin, counseling staff encourage positive peer relationships among campers, the development of daily life skills and team building activities.

Cabin remodels can include new roofs, insulation, flooring, plumbing and electrical upgrades, adding central air, wall construction and demolition, fixture replacements, and painting.

Alpine Cabin



Aspen Cabin



Meadowbrook Cabin



Ponderosa Cabin



Rainbow Cabin



Sunshine Cabin



The cabins are also in need of internet connectivity to enhance counselor-staff communication, and to provide additional programming options.

Font Gate: \$20,000



Everybody wants to feel safe and relaxed at camp. A security gate is worth the investment--it gives peace of mind. We want to send a message that we take safety and security seriously. The current gate is non-functional and needs to be completely redesigned and replaced.

Swimming Pool: \$20,000

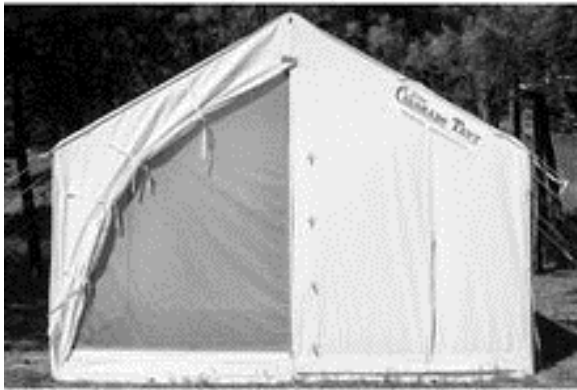


Over time, the coating and/or surface of the plaster on swimming pools degrades, and it must be resurfaced. Pools typically need resurfacing every ten to twenty years. RMV's swimming pool was last done in 2004. Resurfacing is the process of redoing the surface of the pool so that there are no cracks, chipping, or any aging signs on the existing pool surface. These repairs will result in a safer facility to better serve the campers.



Main Lodge Hardwood Floors: \$12,000

The Main Lodge accommodates up to 150 people for meals and meetings. There are two spaces within the Main Lodge needing the hardwood floors resurfaced: Genesee Hall and Jakes Place. Genesee Hall consists of a large meeting room with a large stone fireplace, stage, and sound system. At the other end of the Main Lodge is Jakes Place Cafeteria. The high use of these two spaces has resulted in stains, scratches, and gouges on the hardwood floor surfaces. The spaces only require a simple refinish.



Canvas Tents: \$6,400

We have been working hard at Rocky Mountain Village to keep camp accessible and ready for campers and visitors throughout the year. Rocky Mountain Village (RMV) needs four 14' x 14' canvas wall tents. The tents are a tried-and-true favorite for glamping and outdoor camping for our campers. The tents are an accessible way of providing an outdoor camping experience.

CAPITAL PROJECT NAMING OPPORTUNITIES. A naming opportunity allows donors to name a space that can have a powerful impact. Named opportunities not only provide recognition for the donor but fund the cost of managing and maintaining the building as well as its construction.

Medical Center: \$1,800,000

Staff Lodge: \$1,125,000

Picnic Pavilion: \$300,000

Sports Court: \$120,000

Swimming Pool: \$30,000

Cabins: \$25,000 each

Naming opportunities are available.

Rocky Mountain Village provides naming opportunities for donors contributing significant amounts of construction or related cost to projects.

A donor's name also may be associated with specific buildings, rooms, or areas.

Rocky Mountain Village Endowment

In 2021, thanks to visionary philanthropic investors, we celebrated the creation of our first ever endowment in support of Rocky Mountain Village (RMV).

Traditionally, RMV runs an average annual deficit, currently \$200,000. Although the camp operates a strong fiscal management program, the financial model under which it must operate results in a deficit. Income from campers' tuition comes from either Medicare/Medicaid or private pay, which is set at whatever amount Medicare/Medicaid pays. Currently that is \$1,190. 90% of our campers are funded through the two government programs and most of the private paid campers come from limited means, living on Social Security, disability, or other subsidies. Raising tuition above what Medicare/Medicaid covers is not a reasonable option.

It currently costs \$2,500 to provide the camp experience for one camper for one weeklong session. The difference between the actual cost (\$2,500) and the income (\$1,190) creates a deficit (\$1,310) for each camper. Hosting our annual population of campers creates the \$200,000 shortfall.

The purpose of the endowment is to generate enough funds to offset that shortfall every year. An endowment of \$7 million is necessary to meet that requirement. The details are shown in the table below, but the basic concept is for the endowment to be large enough to offset the annual shortfalls (which will continue to grow) while increasing the principal to support those requirements.

Estimated Endowment Projections

Assumptions		Anticipated Return	Reinvested	Spendable
		6.00%	3.00%	3.00%

Principal: \$7,000,000					
Projected Growth					
Year		Principal	Anticipated Return	Reinvested	Spendable
1	2023	\$7,000,000	\$ 420,000	\$ 210,000	\$ 210,000
2	2024	7,210,000	432,600	216,300	216,300
3	2025	7,426,300	445,578	222,789	222,789
4	2026	7,649,089	458,945	229,473	229,473
5	2027	7,878,562	472,714	236,357	236,357

The endowment is a permanent investment that can ensure the long-term financial stability and growth of RMV and its program. It supports RMV's general operating needs to sustain day-to-day operations and maintenance and is *not* intended for large capital projects. Endowed general operating support:

1. Enables us to build a strong and sustainable infrastructure to provide RMV programs and services that will have the greatest impact.

2. Allows us to direct spending where it is needed and focus on running effective RMV programs, so that we can focus on the mission.
3. Provides camp scholarships for the most financially burdened campers so they can attend camp.

ENDOWMENT NAMING OPPORTUNITIES. Endowments are permanent investments that ensure the long-term financial stability and growth of Rocky Mountain Village (RMV). Donors are invited to establish program endowments related to their personal areas of interest at camp. Named endowments are established with a *minimum* investment of \$100,000 and must be fully funded before funds are dispersed. Endowments can be funded in full or over a five-year period.

An endowment can be established in memory of a loved one, or a donation can be added to an existing fund. Named endowments sustain the values and ideals of those for whom they were established.

The following are endowment named fund possibilities for those who might have interest in beginning one.

Endowed Directorship. These funds are set up in perpetuity to support the Camp Director position. This support gives the holder of the directorship the financial flexibility to utilize their expertise in programmatic excellence rather than spending their time on how to fund camp. An endowment corpus of \$2 million could cover the cost of a director's salary annually.

Endowed Camperships. These funds are used to support scholarships for campers to attend Rocky Mountain Village (RMV) camps. This is your opportunity to give a gift that will last forever. An endowment corpus of \$100,000 can provide one scholarship annually in its first year of being fully funded for people with disabilities to attend camp enabling them to benefit from all camp's activities and programs. Your gift will continue in perpetuity and gives them the opportunity to develop crucial friendships with other campers, volunteers, and camp staff.

Annual Fund

This fund includes all the money Rocky Mountain Village (RMV) needs to raise on an ongoing basis throughout the year. Below are the many ways to give.

Alumni Fund: For over 70 years, Rocky Mountain Village (RMV) has been a gathering place for not only its campers, but current and former camp staff, counselors, and volunteers. RMV and its alumni have been changing the world through its powerful network of doers, spanning the globe in every profession. Gifts to the “RMV Alumni Fund” directly support scholarships for campers and their families in need. We strive to make all our programs available to as many people with disabilities, regardless of the ability to pay.

Annual Sponsorships: The following are *annual* sponsorship opportunities in support of Rocky Mountain Village (RMV) and are renewed every year.

Sponsor a Bench: \$750. Rocky Mountain Village (RMV) has benches located throughout its property where the name of a loved is engraved on a brass plaque. The plaque will be installed for a period of one year, at which point donors will have the first right of refusal to renew their sponsorship with a new donation.

Sponsor a Picnic Table: \$1,000. Picnic tables are located under the Picnic Pavilion. A commemorative plaque will be installed for a period of one year, at which point donors will have the first right of refusal to renew their sponsorship with a new donation.

Sponsor a Camper: \$2,500. Rocky Mountain Village (RMV) is an amazing and awe-inspiring experience for campers that provides them with a lifetime of memories. Provide a scholarship to a child or adult with a disability to attend camp, removing the financial barriers for families so their loved one can gain experiences where they are accepted for who they are, and feel like they belong.

Sponsor Arts & Crafts: \$3,000. Sponsoring our Arts & Crafts activities allows campers to have full access to create incredible pieces of art and use their imagination to their greatest extent. This activity sponsorship will provide the Arts & Crafts program with all the supplies needed for the entire summer.

Sponsor Summer Camp T-Shirts: \$5,000. This sponsorship will provide every Rocky Mountain Village (RMV) camper with a RMV summer camp t-Shirt and can include the logo of a business or the name of an individual sponsor.

Sponsor a Cabin: \$7,500. The purpose of the Rocky Mountain Village (RMV) Cabin Sponsor program is to ensure the regular and continued upkeep of camper cabins. Funding enables replacement of items such as mattresses, screens, windows, and any necessary maintenance. It does not cover capital costs.

Brick Campaign: Support Rocky Mountain Village (RMV) with a personalized brick on our Friendship Lodge brick path. Brick options are below:

4" x 8" Brick: \$300. Offers you three lines of text up to 20 characters max on each line.

8" x 8" Brick: \$750. Offers you five lines of text up to 20 characters max on each line.

Donate Your Car: Has a vehicle sitting around that is not being used anymore? Donate it to Rocky Mountain Village (RMV). To donate your car, truck, boat, or motorcycle, you need a clear title and the keys - your vehicle does not even have to be in working condition. Our partner, [Vehicles for Charity](#), will pick up or tow your vehicle at no cost to you. Then it will be sold at auction, with a portion of proceeds going to support Easterseals Colorado's RMV. Scan QR Code for more.



Event Sponsorships: Take part in one of our signature fundraising events by becoming an Event Sponsor. Scan the QR Code below for more event information:

A Perfect Pairing. Unlimited food and drink pairings from local area breweries and restaurants in the Empire, Georgetown, and Idaho Springs area.



Director Sponsor - \$5,000 • Counselor Sponsor - \$2,500 • Camper Sponsor - \$1,500

4th Annual Archery Challenge. The Archery Challenge consists of (1) target on (28) stations that takes place on the 220 acres of Rocky Mountain Village.

Title Sponsor - \$4,000 • Beverage Sponsor - \$1,500 • Station Sponsor - \$750

20th Annual Classic Clay Shoot. The Clay Shoot will consist of 100 clay targets on 10. Shooters must provide 100 shells (7-8 shot load), as well as eye and hearing protection. Proceeds benefit a special project at Rocky Mountain Village each year.

Titanium - \$10,000 • Platinum Sponsor - \$5,000 • Diamond Sponsor - \$2,500
Gold Sponsor - \$1,500 • Lunch Sponsor - \$1,500 (2 available)
Tent & Table Sponsor - \$1,500 • Silver Sponsor - \$1,000 • Bronze Sponsor - \$500

Give Monthly: Provide monthly support by establishing a recurring gift. In this season of uncertainty where operating income is impossible to predict, your consistent financial support will help our staff deliver lasting impact to our campers.



Matching Gifts: Let us make a greater impact together. Did you know that many employers will match your donations to a non-profit charity? Ask your employer if they participate in a matching gift program. If they do, ask your family and friends to match your gift to Rocky Mountain Village (RMV).

Tribute Gifts. These gifts, given in the name of a loved one, are unique expressions of thoughtfulness. Rocky Mountain Village (RMV) offers two types of tribute gifts: Honor Gifts and Memorial Gifts. Your loved one will receive a special acknowledgment card that recognizes the honoree and the donor. The amount of your gift remains confidential.

An honor gift recognizes a person on a special occasion, such as a birthday, wedding, or anniversary. We also receive honor gifts from families who want to show their gratitude to a counselor, nurse, or caregiver at Rocky Mountain Village (RMV).

A memorial gift offers a meaningful way to pay lasting tribute to the memory of a loved one while also extending sympathy to the family.

Volunteering: You can also help sustain Rocky Mountain Village (RMV) by volunteering! We need additional hands to help us through every season. Come once or come often, we would love to serve alongside you and or your company/team.

Wish List: There is a list of supplies that Rocky Mountain Village (RMV) could use for their programs throughout the year. Please view the list by scanning the QR Code or by clicking [here](#). If you find something on the list that you would like to purchase and donate back to RMV, you can complete the attached in-kind form located at the back of this booklet and mail to or drop off at camp.



Did you know your gift may be eligible for a Child Care Contribution Tax Credit?

The Child Care Contribution Tax Credit (the CCTC) provides a valuable tax credit against a taxpayer's Colorado state income tax.

The credit equals 50 percent of the amount of a contribution made to a qualifying Colorado charitable organization that promotes childcare.

Donations provided to Rocky Mountain Village are eligible for the Child Care Contribution Tax Credit up to \$100,000.

About Your Contributions

Charitable contributions, whether for Capital Projects, the Endowment Fund, or the Annual Fund, can be arranged to meet personal objectives while minimizing after-tax cost. Options to consider for your gift include the following:

- **Cash:** Cash contributions immediately benefit Rocky Mountain Village (RMV) and may provide tax benefits to donors who itemize deductions.
- **Pledges:** Pledges enable donors to give more than possible with a single donation, and they provide maximum tax savings for extending the contribution over a longer period. Pledges can be made over a three- or five-year payable timeframe.
- **Wire Transfer:** A wire transfer, bank transfer, or credit transfer can be made from your bank account to Easterseals Colorado's bank account, or through a transfer of cash at a cash office. You will need to contact the Development Office to let them know you would like to initiate a wire transfer for donation purposes and be provided with wire transfer instructions. For wire transfers contact the Office of Development at 303.233.1666x416.
- **Appreciated Stock:** Stocks or other investments that have grown in value and you have held for more than one year can become a substantial gift made at a low net cost to you. You receive a charitable deduction and avoid all federal capital gains tax that would otherwise be due on a sale of the assets. If you own securities worth less now than when you purchased them, sell them, and contribute the proceeds. See page 32 for transfer instructions.
- **Donor Advised Funds (DAF):** Directing funds from your Donor Advised Fund to the Easterseals Colorado care of Rocky Mountain Village (RMV). A donor-advised fund (DAF) is a type of giving program that allows you to combine the most favorable tax benefits with the flexibility to easily support your favorite charities. An increasingly popular charitable vehicle, DAFs are an excellent way to both simplify your charitable giving and facilitate your strategic philanthropic goals.
- **Qualified Charitable Distribution (QCD):** Allows taxpayers aged 70 ½ or older to transfer up to \$100,000 annually from a taxable IRA account directly to a charity without first having to recognize the distribution as income. While the process of completing a QCD to a charity is straightforward, the key administrative requirement is that the distribution check must be made payable directly to the charitable entity. If the funds go to the IRA account owner and are then passed along to the charity, it is still a taxable distribution to you and not a QCD. Under IRS Notice 2007-7, Q&A-41, it is permitted for the check to be mailed to the account owner, if the check is payable to the charity, but a check payable to the account owner that is merely endorsed over to the charity does not satisfy the QCD requirements.

- **Real Estate:** Gifts of property can be a convenient way to make a sizable gift. A direct gift is the simplest method of donating real estate. The deed or title is transferred from you, the donor, to Easterseals Colorado's Rocky Mountain Village (RMV). As the donor, you receive a tax deduction equal to the fair market value of the property and that deduction may be carried forward for five years.
- **Personal Property:** Gifts of art, rare books, coins, or collectibles also qualify for deductions. If the property has been held long-term and can be used to further the Rocky Mountain Village (RMV) mission, the donor may receive a charitable deduction. Any donated item valued over \$5,000 requires an appraisal paid for by the donor.
- **Charitable Gift Annuity:** A gift annuity is a tool that allows you to donate cash or other assets to support Easterseals. In return, Easterseals pays you a fixed payment amount for the rest of your life. That amount is based on attractive payment rates, determined by your age at the time the gift is made. Best of all, it is guaranteed — the payment amount never changes. After your lifetime, what remains from your gift is used to support Easterseals' work.
- **Bequests:** One of the simplest planned gifts is a bequest through your will in which you designate either a specific dollar amount or a percentage of your estate after other disbursements. In addition to supporting Easterseals Colorado, it serves as an example to your heirs of the values and ideals you hold dear. A bequest also can reduce the amount of your taxable estate, which may increase the actual amount available to loved ones.

Donations can be made via cash, check or charge and can be mailed to:

Easterseals Colorado
ATTN: Sharon Kay Brown
393 S Harlan St Ste 250
Lakewood, CO 80226

Checks made payable to: Easterseals Colorado, and check memo line: Rocky Mountain Village or RMV

Credit/debit cards can be called in to the office directly or by clicking [here](#). For your convenience you can scan the QR code to the right or go to our website at www.easterseals.com/co. Please call Sharon Kay Brown, Vice President of Development at 720.234.5976 if you have any questions.



To learn more about Easterseals Colorado's mission to provide full equity, inclusion, and access for people with disabilities by enhancing well-being, expanding employment, and elevating community click [here](#) or go to <https://www.easterseals.com/co/>. For more information about Rocky Mountain Village (RMV) click [here](#) or go to <https://www.easterseals.com/co/programs-and-services/play/rocky-mountain-village-camp/>.

Stock Transfer Information

Instructions for Transferring Appreciated Securities

Making gifts of appreciated securities does not need to be complicated. When giving securities, please be sure to consult with your financial advisors and/or attorney. Additional time should be allotted for the completion of such gift transactions.

Transfer instructions for stock held with a broker (securities held by your broker)

1. Call Easterseals Colorado Office of Philanthropy at 303.233.1666 x266 to notify us of your gift.
2. Instruct your broker in writing to transfer the stock directly to Easterseals Colorado's brokerage account (see below for details).
3. Confirm your gift with a letter to Easterseals Colorado Office of Philanthropy describing the securities, as well as specifying how your gift should be used by Easterseals.

Instructions for stock held in certificate form (certificates you hold)

1. Call Easterseals Colorado Office of Philanthropy at 303.233.1666 x266 to notify us of your gift.
2. Mail the unendorsed certificate, along with a letter of instruction, to Easterseals Colorado Office of Philanthropy.
3. In a separate envelope, mail a stock power (signed and dated) for each certificate to:

Office of Philanthropy
Easterseals Colorado
393 S Harlan St, Ste 250
Lakewood, CO 80226

For your convenience, Easterseals Colorado's brokerage account information is as follows:

DTC No:	0725
Account No:	24161762
Bank/Brokerage Firm:	Raymond James
Attention:	Megan Basten, Senior Client Service Associate
Address:	100 Saint Paul St
City:	Denver
State:	CO
Zip:	80206
Telephone:	720.925.3025
Fax:	844.436.2472
Easter Seals Colorado Federal EIN #:	84-0412575

As with any decision involving your estate plans, we urge you to seek the advice of professional counsel when considering a gift to Easterseals Colorado. Thank you for your time and consideration.

Commitment Form

Donor Information (please print or type)

Name:			
Company:			
Billing Address:			
City:	State:	ZIP Code:	
Telephone:	<input type="checkbox"/> cell	<input type="checkbox"/> home	<input type="checkbox"/> business
Fax:	E-mail:		

Pledge Information. I (we) pledge a total of \$_____ to be paid as a:

<input type="checkbox"/> <i>One-time Gift Now</i>	<input type="checkbox"/> <i>Recurring Gift.</i> I would like to make the donation:
<input type="checkbox"/> <i>Pledge.</i> Installments over:	<input type="checkbox"/> Monthly <input type="checkbox"/> Quarterly
<input type="checkbox"/> Five Years	<input type="checkbox"/> Annually in the month of _____
<input type="checkbox"/> Four Years	<input type="checkbox"/> Bi-annually in: month 1 _____
<input type="checkbox"/> Three Years	month 2 _____
Installment reminders will be sent to you.	

Your gift will be designated to Rocky Mountain Village (RMV) unless otherwise specified here: _____

Payment Details.

I (we) plan to make this contribution in the form of:

☐ *Check.* Please make check(s) payable to Easterseals Colorado (memo RMV).

☐ *Credit Card.* Charged on the first business day of the month if recurring gift.

Please charge my: ☐ MasterCard ☐ VISA ☐ Discover

Credit Card No.: _____ Exp.: _____ CVV: _____

Cardholder Signature: _____

☐ *Stock.* Transfer Date: _____ Stock Name/Symbol: _____ # of shares: _____

☐ *Other:* _____

Gift(s) will be matched by _____ (company/family/foundation)

☐ form enclosed ☐ form will be forwarded

Acknowledgment Information.

Please use the following name(s) in all acknowledgments:

☐ I (we) wish to have our gift remain anonymous.

Please sign and date below, confirming your financial commitment to Easterseals Colorado.

Signature(s) _____

Date _____

Thank you for your generous support. We could not conduct our work without you! Easterseals Colorado is a 501(c)(3) nonprofit organization. As such, your contribution is tax-deductible to the full extent of the law, though this is not intended as legal or tax advice. Kindly consult with your professional advisor(s) regarding your situation.

Rocky Mountain Village In-Kind Donation Form

Date: _____ Item Value: _____

My company/I will be donating: _____

Donor Name: _____

Contact Name: _____

Address: _____

City, State, Zip: _____

Email: _____ Phone: _____

_____ Item will be mailed to Sarah Wadley at: Rocky Mountain Village (RMV), PO Box 115,
Empire, CO 80438

_____ Item will be dropped off to Sarah Wadley at : Rocky Mountain Village (RMV), 2644
Alvarado Rd, Empire, CO 80438

_____ Item will need to be picked (Easterseals Colorado or Rocky Mountain Village (RMV)
staff will reach out to scheduled pickup)

Questions? Please contact:

Katie Stegall

Rocky Mountain Village

303.569.2333x3

kstegall@eastersealscolorado.org

Easterseals Colorado is a 501(c)(3) organization. Tax I.D. # 84-0412575

*Thank you so much for your donation; it will make a difference in the lives of the children and
adults with disabilities who rely on Rocky Mountain Village (RMV) services!*

Easterseals Colorado Board of Directors

Tim Bounds

Evans Case UP
Denver, CO
Term: 10/4/2018 – 10/4/2024

Michael Carrigan

Holland & Hart LLP
Denver, CO
Term: 6/21/2018 – 6/21/2024

Larry Caster

Enterprise Fleet Management
Centennial, CO
Term: 12/17/2009 – 12/17/2023

Kathryn Corrigan

GE Johnson Construction
Denver, CO
Term: 4/6/2017 – 4/6/2025

Michael Drennen

Alpine Lumber Co.
Denver, CO
Term: 6/18/2009 – 6/18/2023

Karl R.S. Engelmann

Angel Oak Capital Advisors
Bow Mar, CO
Term: 3/18/2021 – 3/18/2024

Roger Forystek

NatKris Property, LLC
Parker, CO
Term: 6/6/2011 – 6/16/2023

Robert Gardner

Law Offices of Robert S. Gardner
Colorado Springs, CO
Term: 12/19/2013 – 12/19/2023

Clint Garrett

Ameristar Casino Resort and Spa
Black Hawk, CO
Term: 12/9/2021 – 12/9/2024

Amanda Hardin

Roche & Coompany
Denver, CO
Term: 6/21/2023 – 6/21/2024

Vonnie Hergett

Nelson, Foster and Associates
Denver, CO
Term: 9/21/2012 – 9/21/2023

Brian Howell

Schwab Charitable Fund
Lone Tree, CO
Term: 12/14/2017 – 12/14/2023

Clare Huber-Navin, NP

Office Practicum
Highlands Ranch, CO
Term: 12/14/2017 – 12/14/2023

Joycelyn Jagers

Century 21
Denver, CO
Term: 10/3/2019 – 10/3/2025

Roman Krafczyk*, President/CEO

Easterseals Colorado
Lakewood, CO 80226

Jason Koch, Chair

Johnson Storage & Moving Company
Centennial, CO
Term: 6/21/2018 – 6/21/2024

Darrell Laing

Wagner Wealth Management
Highlands Ranch, CO
Term: 3/12/2015 – 3/12/2023

Chris O'Donnell

Alpine Lumber Co.
Denver, CO
Term: 12/8/2022 – 12/8/2023

Laura Pals*, *Secretary*

Easterseals Colorado
Lakewood, CO 80226

Kevin Poel

Shields Health Solutions
Arvada, CO
Term: 10/3/2019 – 10/3/2025

Nicole Poel

CU School of Medicine
Arvada, CO
Term: 10/3/2019 – 10/3/2025

Marlene Seward

Parker, CO
Term: 12/18/2012 – 12/18/2023

Evan Sisneros

Central Bank & Trust
Denver, CO
Term: 6/15/22 – 6/15/2023

Mary Spillane

Comcast
Aurora, CO
Term: 7/11/2019 – 7/11/2025

Ben Van Dyk

Van Dyk Construction
Littleton, CO
Term: 10/14/2021 – 10/14/2024

Peter Wall

True Link Financial
Littleton, CO
Term: 10/4/2018 – 10/4/2024

**Non-voting*

Contact Us!

Easterseals Colorado
393 S Harlan St Ste 250
Lakewood, CO 80226
303.233.1666
<https://www.easterseals.com/co/>



Rocky Mountain Village
2644 Alvarado Rd
Empire, CO 80438
303.569.2333

<https://www.easterseals.com/co/programs-and-services/play/rocky-mountain-village-camp/>



Revised 8/3/2023

