



Easter Seals Blake Foundation

ANNUAL REPORT 2015



EASTER SEALS BLAKE FOUNDATION ADMINISTRATIVE ADDRESS

7750 E. Broadway Blvd. • Suite A200 • Tucson, AZ 85710
Phone: (520) 327-1529
Fax: (520) 327-1869

ORGANIZATION

Easter Seals Blake Foundation has been serving disabled & disadvantaged individuals and their families throughout Southern Arizona since 1950, positively impacting the lives of over 19,000 children, adults, and families each year. Our services range from Early Intervention and Head Start programs, summer camps, behavioral health services, all the way to long term supported living and employment trainings.

We are the largest social services non-profit employer in Southern Arizona.

MISSION

Easter Seals Blake Foundation is dedicated to the idea that all people deserve the chance to live healthy, productive, and independent lives. Our educational, therapeutic, family support and community living programs are designed in accordance with our mission: to enable each individual served to discover and meet his or her maximum potential for independent, productive living and developmental growth.

VISION

We will provide opportunities, supports and services to children, adults and families, with compassion and respect for them as valued members of their communities, involved and participating based on their own choices.

LETTER FROM THE PRESIDENT AND CEO



Autumn van den Berg
Board President



Ema Kammeyer
Chief Executive Officer

Easter Seals Blake Foundation (ESBF) knows that our community is stronger when we build on the abilities of all our members. That is why we work in local communities all over Arizona as champions for ability and opportunity, enhancing the lives of all our families and clients. Working in partnership, we offer guidance, provide support and inspire action so everyone can reach for and realize the life they choose. Each member of our staff and Board of Directors, as well as our philanthropic supporters plays an important role in this vision; it is this collaboration which has enabled us to grow and succeed for over 65 years.

The past year has been one of significant growth and diversification. We have expanded services in several areas, including supervised family visitation, inclusion training for community child care centers, Parents as Teachers training, parent aide programs, summer camp for adolescents and teens with emotional challenges, Trauma-Informed care counseling, semi-independent living and outreach programs for young adults through the behavioral health system, Neonatal Intensive Care programs, and Behavioral Health Intake and Coordination of Care. We also added an infant/toddler classroom to our Children's Achievement Center in Tucson. As with any undertaking which experiences this kind of dynamic growth, the ongoing challenge is to ensure that the agency's administrative and organizational supports keep pace. We have added several insurance and contract billing staff, along with acquiring a new expertise in some very complex funding and reimbursement structures. The ultimate message we want to convey is that we are so very grateful to have these opportunities and challenges. As a trusted provider of essential social services, we realize that in many instances ESBF is the only resource available to our most underserved and vulnerable community members. Without excellent staff, a very supportive donor base and a committed Board of Directors, we could never experience the gratification of knowing that we make a significance difference in our communities, enhancing the lives of over 19,000 individuals and families each year.

Having been named Primary Beneficiary of the El Tour de Tucson has been an incredible experience. The sheer size and logistics of this event are awe-inspiring. Participating in the preparation and staging of El Tour has been full of fun and filled with educational opportunities. We look forward to continuing our partnership with the wonderful people at Perimeter Bicycling.

As we move into the New Year, we are excited to continue our work. Your support is appreciated and valued. And together, we will change the lives of many for years to come.

Respectfully,
Autumn van den Berg & Ema Kammeyer

SAGE COMMUNITY SERVICES

SAGE continued to grow our existing quality services and implement new programs throughout 2015. In line with our commitment to participate in on-going training, and hosting professional development workshops, SAGE hosted a two-day Exploring Equine Assisted



Mental Health workshop which was facilitated by the Browne Center and Prescott College to teach approaches of equine assisted mental health interventions. Staff attended several conferences and trainings including the National Council for Behavioral Health's conference, with a broad selection of relevant topics.

Our Behavioral Health program focused on providing quality services for youth who have experienced traumatic events. Our wrap around services combines our expertise in trauma informed care with our experience supporting youth with other behavioral health needs to help them develop into healthy community members. We implement a unique approach by integrating equine assisted and nature-based therapy with Neurosequential Model of Therapeutics, a developmentally informed, biologically respectful approach to working with youth. Meeting the needs of underserved Arizona youth and their parents, SAGE offered three different summer programs to provide safe alternatives to out-of-school time: Campo del Oeste, Sensory Camp, and Safford Camp. These programs had an energetic and compassionate group of facilitators, new and returning, leading youth in meeting personalized goals. It's exciting to watch youth develop positive group dynamics, and invest in the culture they're creating at camp.

SAGE is committed to community engagement, and the day programs have been models of inclusion and outreach. A number of individuals in the day program enrolled in online college courses that they participated in and completed while at the program. Although participants don't

CONTINUED FROM PAGE 3

receive credit for the courses, they have led to community engagement and discussions about the course topics. SAGE Ceramics dedicated much of the year creating products to sell at Easter Seals Blake Foundation's fundraising events. The day programs and ceramics made wind chimes for Walk Run Roll, Cooking with the Stars, and souvenir pieces for El Tour de Tucson.

Our Supported Living Programs which provide integrated community supports throughout southern Arizona has expanded. We are now providing attendant care, habilitation, and respite services to over 100 individuals.



Banner University Medical Center hosts our Project SEARCH Program which provides on the job training for youth who are transitioning from school to work. This year they provided dedicated classroom space to the program. A number of individuals graduating from the program were offered positions as hospital employees. The number of youths attending this program will double in 2016.

In Morenci, SAGE expanded job-coaching opportunities to include janitorial services to the Freeport McMoRan Industries Rec Center. Freeport McMoRan is extremely supportive of ESBF's provision of services in their community. They provide space for a Day Program and space and equipment for the Cup 'n Cone.



**Easter Seals
Blake Foundation**

CONTINUED ON PAGE 4

CFS-CHILDREN AND FAMILY SERVICES

Children and Family Services' vision is to ensure that every Arizona child is thriving, every family is strong, and every community is connected. To that end, CFS makes a special effort to provide services for marginalized communities. In August 2015, in partnership with Central Arizona College, we officially opened the doors to two new, high-quality early learning centers in Apache Junction and Coolidge.

Before August, more than 90% of these communities' children were being served by childcare programs rated as below standards by the statewide childcare assessment and improvement program, Quality First. Since opening, parents have been overjoyed with our new programs and with the progress of their children. One example: when four-year-old Alexa came to us, her speech was delayed and she had a difficult time articulating herself so that she could be understood. Since attending Signal Peak Early Learning Center in Coolidge, Alexa's speech has improved so much so that she is now speaking in full sentences! This is Alexa's first time in childcare, and her parents were nervous about leaving her, but now say how thankful they are for the care and education she is getting.

2015 was another year of excellence elsewhere in the division as well. Our children and family therapists across Southern Arizona are each completing intensive ongoing training to become certified in Child-Parent Psychotherapy, an evidence-based therapy specifically designed for young children who have experienced trauma. ESBF is the only Arizona provider outside of Maricopa County whose staff are trained to utilize this premier model. CPP is a great tool in supporting the growing number of Arizona children who have been victims of abuse or neglect. Also building on our repertoire of evidence-based options for families, in 2015 CFS was chosen by Georgia State University to receive free training on the SafeCare program. SafeCare has been shown to be a highly effective prevention and intervention program that can actually reduce child maltreatment.

CONTINUED FROM PAGE 5

CFS is serving more families than ever through the expansion of several services including in-home nursing (Neonatal Intensive Care Program, Nurse-Family Partnership), parenting education and support (Pinal Parents as Teachers, Greenlee Parents as Teachers, Case Aide, Incredible Years), professional development for childcare providers (Quality Counts, Statewide Inclusion), and quality improvement for childcare programs (Arizona Self-Study Program, Smart Support). CFS is proud to continue to be chosen to implement important strategies in support of Arizona children and families.

Finally, as 2016 begins we welcome a new Division Director, Aimee Graves. Aimee brings a wealth of experience that will help build upon our past successes and achieve new heights. Thank you to Linda Lopez for two years of service and for the gains made by the CFS during her tenure.

Our Mission:

To enhance the lives of children, families, and our community.

Our Vision:

Every child thriving, every family strong, every community connected.

CONTINUED ON PAGE 6

CONGRATULATIONS TO THE COMMUNITY LIVING SERVICES (CLS) DIVISION FOR ALL THEIR HARD WORK IN 2014-15!



Meet Conner, a 27 year old young adult living in our 29th Street home. Conner is autistic. He, like many individuals with autism wander or run away from their safe environments. Maybe to a favorite place or escaping an anxious situation or uncomfortable sensory stimuli. These behaviors kept Conner at home and away from the outside world. It

was very scary and stressful for his family, so they turned to ESBF's CLS for help. After his short residence, Conner is now able to go out shopping and enjoys public outings of all kinds. Recently, his family was extremely surprised and delighted to see him participating in a CLS party with a large group of people enjoying riding a roller coaster and carousel. His success is attributed to the dedication of the CLS staff to the betterment of the lives of those they serve.

Sadly, we said goodbye to two longtime residents in Safford. Despite their passing, they remain part of the ESBF family and will be forever in our hearts and minds.

Congratulations to our amazing staff, who were recognized by the Division of Development Disabilities! CLS was awarded two grants for their work with autistic teens. Grant funding was used to improve community living homes in the Tucson area. One of these homes is Kelso, which has four young adult men with autism residing in the house. The residents are thrilled to be living in a home with a pool, where they are able to receive their Individual Support Plan water therapy exercises. ESBF staff have done a great job providing the teens a warm and safe environment to reside in, ensuring their experience is that of a happy home.

LAST YEAR, EASTER SEALS BLAKE FOUNDATION REACHED OVER 20,000 PEOPLE IN SOUTHERN ARIZONA

Who Did We Serve?

Client Demographics*

Age

0-2.....	5,349
3-5.....	2,203
6-17.....	1,820
18-64.....	10,265
65-74.....	19
75+.....	5

Gender

Male	6,387
Female	12,916

Heritage/Ethnicity

Asian American.....	169
African American	966
Caucasian.....	9,393
Hispanic.....	4,794
Native American	379
Native Hawaiian or other Pacific Islander	19
Multiple Ethnicity.....	416
Other.....	2,689

Total Clients Served 19,661

*Demographic data is not collected for all programs

Community Engagement

Community Outreach Activities 12,319

Conference Exhibits
Health Fair Exhibits
Open Houses

Educational Programming Activities..... 1,699

Parent/Caregiver Seminars
Teaching engagements

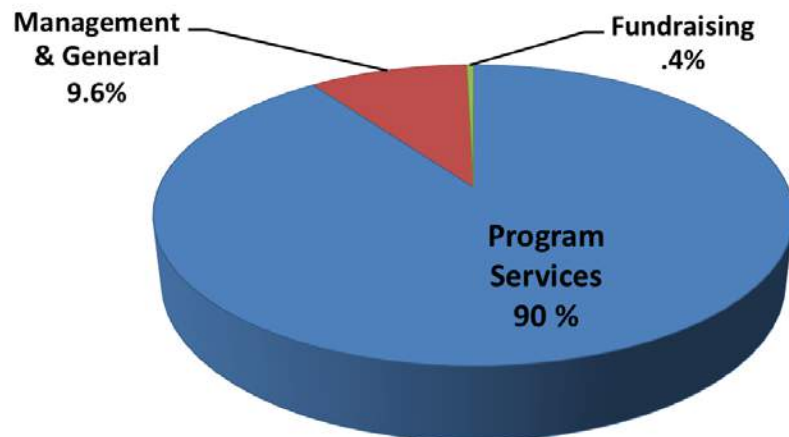
Volunteer Activities 558

Affiliate Program Volunteers
Special Events
Office Initiatives

Total Engaged Through Outreach, Educational, & Volunteer Activities..... 14,576

FINANCIALS

How was your money invested?



Easter Seals Blake Foundation and Subsidiary
Consolidated Statement of Activities

Revenue and Support:

Client Services	32,354,276
In-Kind Contributions	903,233
Tuition and fees	827,946
Other Revenue	85,293
Development	267,963
Total Revenue and Support	\$34,438,711

Expenses:

Program Services	31,460,659
Management and General	3,365,454
Fund-Raising	153,833
Total Expenses	34,979,946
Change in Net Assets	(602,829)*
Net Assets, Beginning of Year	6,077,272
Net Assets, End of Year	\$5,474,443

BALANCE SHEET

Assets

Current Asset:

Cash and Cash Equivalents	452,102
Accounts Receivables	4,871,029
Prepaid Expenses and Other Assets	117,768
Total Current Assets	\$5,440,899
Property and Equipment, net	9,268,694
Other Assets	652,695
Total Assets	\$15,362,288

Liabilities and Net Assets

Current Liabilities:

Accounts Payable	2,884,484
Line of Credit	2,420,000
Notes payable	885,085
Total Current Liabilities	6,189,569
Notes Payable, Non-Current Portion	3,693,776
Total Liabilities	\$9,883,345
Total Unrestricted Net Assets	4,500
Total Net Assets	\$5,478,943

Total Liabilities and Net Assets **\$15,362,288**

*The change in net assets amount primarily reflects expenditures necessitated by the award of a new contract for expanded Behavioral Health Services. This larger scope of work required that we purchase, implement and train all staff on a new Electronic Health Records System. The contract also mandated several additional administrative positions to be hired in advance of the actual start date of the contract and the funding to cover those positions. Finally, several of our older service lines ran deficits; those programs are being rigorously monitored and analyzed for feasibility.

THANK YOU TO OUR DONORS

Alphagraphics 153	Community Partnership of Southern Arizona	Robert W. Fischer, III
Bergerac Lane Inc.	Brian & Mary Connelly	Gary Fletcher
Joe & Marlene Andrews	Dennis & Sevren Coon	Fraternal Order of Police Lodge 20
Angel Charity for Children, Inc.	Mesch Clark & Rothschild P.C.	Freeport-McMoRan Foundation
Southern Arizona Mustang Club	Copygraphix, Inc.	Kevin Fugate
Patricia C. Arnell	Sergio Cossio	Craft Galyen
Len Nicoll & Tari Auletta	Cox Communications	Frank R. Garcia
Stacy Barnett	Dolores J. Crawford and Dorothy L. Pratt	GBP Risk Solutions
Jane C. Beaver	CTI, Inc.	Nicholas W. Genematas, II Foundation
S K & A Janitorial	Chuck Cushman	Donna Gillette
danny Blake	CVS Caremark	Michael Goldsmith
Larry Blake	Donald R. Dean	Bramic Design
Blue Cross Blue Shield	The Evo and Ora Deconcini and The Family Foundation	Johnse Good
Blue Willow Restaurant	Eugene C. and Wiletta F. Denton Family Foundation	Graham Greenlee Association of Realtors
Carl & Joan Boesewetter	Desert Diamond Casinos & Entertainment	Dina Green
Borderlands Brewing Company	Gary D. Dill	Green Valley Glass
Brinker International	Charles & Carrie Durham	Andrea Gutierrez
Kathleen Brown	Edward & Paula Dwornicki	Mitch Gutierrez
Ron Brown	Susan Eck	Lisa Gwinn
Elizabeth Bruce	David & Donna Ellington	Brian & Susan Ham
Ryan J. Bruce	Empire Machinery	Daniel Heisey
Susan Bruce	Enterprise Holdings Foundation	Michael & Sharon Hodges-Owen
Bruce & Company	Matthew Ewing	Roxanne Holly
Richard & Andrea Canchola	Express Scripts Foundation	Hughes Federal Credit Union
Caremore Health System	Albert & Ann Ferguson	intelliTECH Communications Group
Stuart Carey, Sr.	Fidelity Charitable Gift Fund	Amy Jaffe
Grace D. Carrithers	Pete Finley	Kola Janoff
Guy Carter	Linda Fiore	Glenn Jenkins
Casino del Sol Resort	First Nonprofit	Rodney Jilg and Nina Trasoff
Matt Chapman		Jim Click Automotive Team
Chapman Automotive Group		JK & K Services, LLC
Eric & Cary Chatham-Hahn		Kendra Johnson
John & Debbie Clark		

THANK YOU TO OUR DONORS

Kalil Bottling Co.	Network for Good	Bruce & Barbara Schmidt	Michelle Vaccaro
Ema Kammeyer	Delores A. Norton	Daniel Schmidt	Valley of the Sun United Way
Carla Keegan	Russell & Lynnette Noyce	Bill Schuerman	Autumn van den Berg
Gary Kershner	Daniel & Madhvi Owen	Jason Scott	Brent VanKoeveering
Carla Kirchner	Tom Owen & Lindy Cote	Josephine J. Sherwood	Robert Wang
Ben & Olivia Kirchner	Pascua Yaqui Tribe	Lucinda Smedley	James Weaver
Stella Kondonijakos	Roger Pease	Corey Smith	Keith Wiegand
Kroger	Bonnie Pechin	Alfred Spalding	Mark Willis
Ashleigh Kruk	Rick Peller	Special Needs Project	The Wings Like Eagles Foundation
Cindy Legg	MaryAnn Penczar	Stacey Spink	Douglas & Patricia Wylie
Edward Leyba	Pima County Human Resources	Joseph Stewart	
Long Realty Cares Foundation	Pima Prevention Partnership	Stone Canyon Community Foundation	
Linda Lopez	John Polsgrove	Sundt Foundation	
Lovitt & Touché	David Charles Preston, CPA, PC	Ray & Elfrida Suttles	
Main Street Executive & Employee Benefits, LLC	Christi Priewe	Hale & Holly Thomas-Hilburn	
Doug & Laura Mance	Jim Purdy	Thunder Mountain Moose Lodge #2475 - Loyal Order of Moose	
Thomas & Lynne Mangold	QuikTrip Corporation	Patrick & Jacqueline Torrez	
Page Marks	Raytheon	Donald & Diane Trout	
Andrew Martin	Kate Richter	Tucson Realtors Charitable Foundation	
David Martin	Law Office of Kay Richter	Strickland Tudor	
Lisa McCune	Bryant & Madia Riggeal	Jennifer E. Turner	
Phyllis McEnroe	Mel & Joann Rivers	John Turner	
Carina Melero	Galena Robinson	Julian & Aimee Turner	
Meredith's Hallmark Shop	Bert & Glenda Rogers	United Way of Cochise County	
Marilee Meyer	Ana Romero	United Way of Graham County	
Edward Moore	David & Melissa Sadorf	United Way of Tucson & Southern Arizona	
Howard V. Moore Foundation	The Safeway Foundation		
Glenn & Johanna Moyer	Safford Lions Foundation, Inc.		
Kam & Alice Nasser	Michael & Elizabeth Sampsel		
Matt Neely			

*This list represents donors who made a gift of \$150 or above from July 1, 2014 through June 30, 2015.
We appreciate everyone who supported us at all levels.

*This list represents donors who made a gift of \$150 or above from July 1, 2014 through June 30, 2015.
We appreciate everyone who supported us at all levels.

ANNUAL FUNDRAISING EVENTS



COOKING WITH THE STARS



SPRING GOLF CLASSIC



WALK • RUN • ROLL



Wheels for Easter Seals

34TH ANNUAL EL TOUR DE TUCSON

Presented by Casino Del Sol Resort

benefiting Easter Seals Blake Foundation

being held

November 19, 2016

Register at www.Wheels4EasterSeals.com

Founded in 1983, **El Tour de Tucson** is Perimeter Bicycling's flagship event and the largest Perimeter bicycling event in America. Held annually the Saturday before Thanksgiving, El Tour attracts over 9,000 cyclists of all ages and abilities from around the United States and beyond. Southwest Airlines' in-flight magazine, Spirit (June 2001) named El Tour de Tucson one of the premier organized rides in United States. Bicycling Magazine ranked El Tour as one of the top three fundraising rides in the country (October 2002) and the best in cycling in November (2010). Since 2005, Perimeter Bicycling has produced an annual Downtown Fiesta on El Tour day, bringing together cyclists and members of the greater Tucson community for a celebration of art, health and fitness.



Board of Directors

President – Autumn van den Berg
Vice-President – MaryAnn Penczar
Secretary – Brent Van Koevering
Treasurer – Lindy Cote
Past President – Betsy Bruce

Members

danny Blake
Linda Fiore
Michael Goldsmith
Dina Green
Edward P. Leyba
James Maina
Eric Meyers

WE ALL OWN THE FUTURE OF OUR MISSION, AND YOU CAN HELP!

1. ***Learn*** Experience our mission with a tour or participate in an event.
2. ***Invest*** Join our cause by making a personal gift.
3. ***Share*** Be an advocate for our cause! Share our story and invite a friend to experience our mission.
4. ***Sustain*** Be a lifelong partner and consider including us in your estate plans



Easter Seals Blake Foundation

(520) 327-1529

www.blakefoundation.easterseals.com

This institution is an equal opportunity provider and employer.